

Association of Minnesota Counties
2010 LEGISLATIVE STAFF



**INTERGOVERNMENTAL
SERVICES MANAGER**

Scott Simmons
Office: 651-789-4341
Cell: 651-247-1954
simmons@mncounties.org



**ENVIRONMENT &
NATURAL RESOURCES**

Annalee Garletz
Office: 651-789-4322
Cell: 651-303-4856
garletz@mncounties.org



HEALTH & HUMAN SERVICES

Patricia Coldwell
Office: 651-789-4330
Cell: 651-303-4855
pcoldwell@mncounties.org



PUBLIC SAFETY

Director, Minnesota Association of Community
Corrections Act Counties (MACCAC)

Ryan Erdmann
Office: 651-789-4345
Cell: 651-402-5745
erdmann@maccac.org



**TAXES & COUNTY
OPERATIONS**

Joe Mathews
Office: 651-789-4343
Cell: 651-303-4836
mathews@mncounties.org



**TRANSPORTATION &
ENERGY**

Ryan O'Connor
Office: 651-789-4339
Cell: 651-303-4854
oconnor@mncounties.org



ASSOCIATION of MINNESOTA COUNTIES
Proudly Serving Counties Since 1909.

Main Line/Switchboard: 651-224-3344
Fax: 651-224-6540
www.mncounties.org

Affiliated Organization Contacts



**LOCAL PUBLIC HEALTH
ASSOCIATION OF
MINNESOTA (LPHA)**

Julie Ring, Director
Office: 651-789-4354
Cell: 651-247-9418
ring@mncounties.org

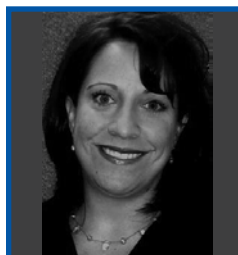


**MINNESOTA ASSOCIATION
OF COUNTY SOCIAL
SERVICE ADMINISTRATORS
(MACSSA)**

Kate Lerner, Director
Office: 651-789-4340
Cell: 651-308-0734
lerner@mncounties.org



Eric Ratzmann, Legislative Liaison
Office: 651-789-4344
Cell: 651-249-4134
ratzmann@mncounties.org



**MINNESOTA WORKFORCE
COUNCIL ASSOCIATION
(MWCA)**

Anne Olson, Director
Office: 651-789-4323
Cell: 651-303-4858
aolson@mncounties.org