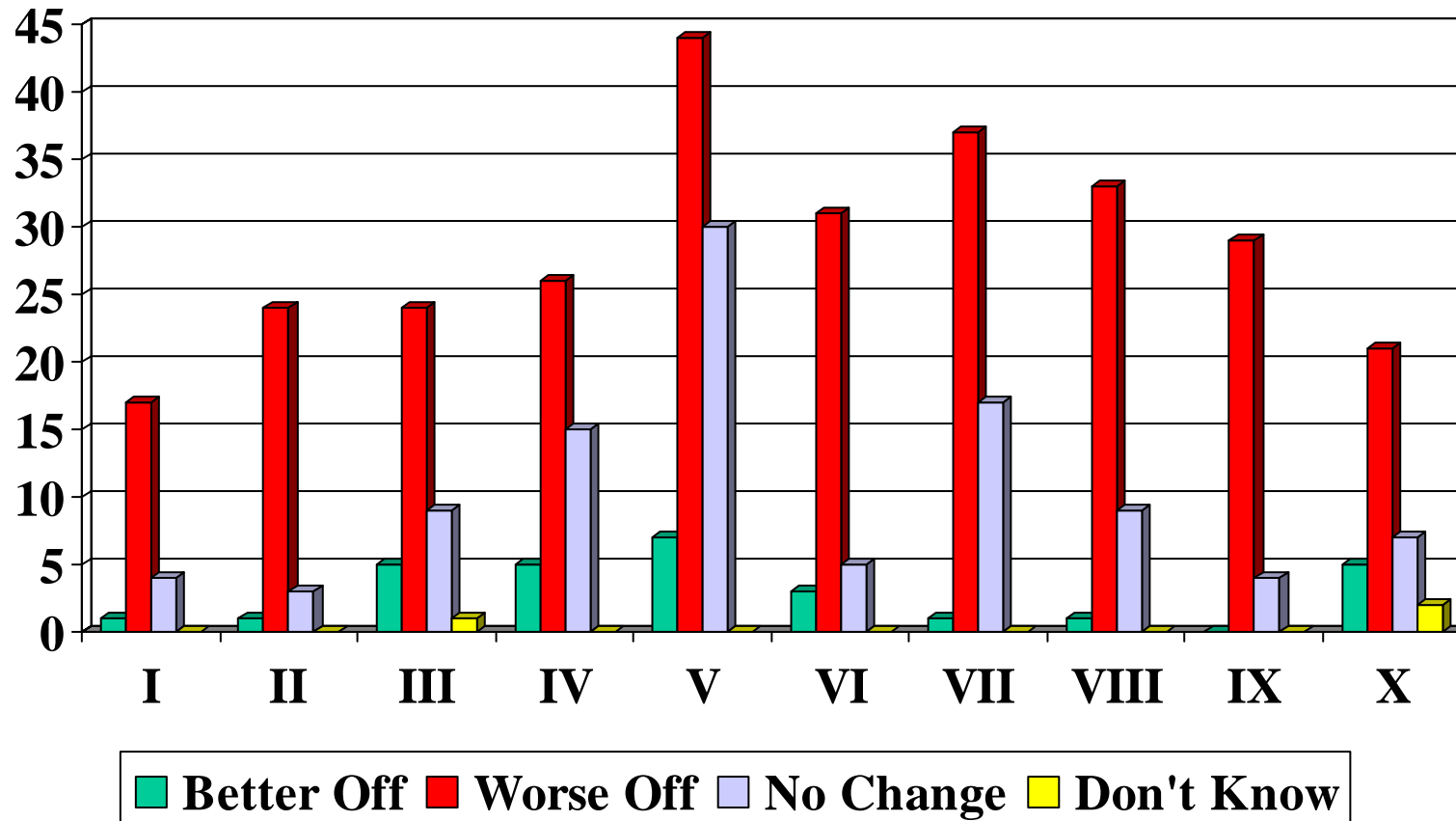


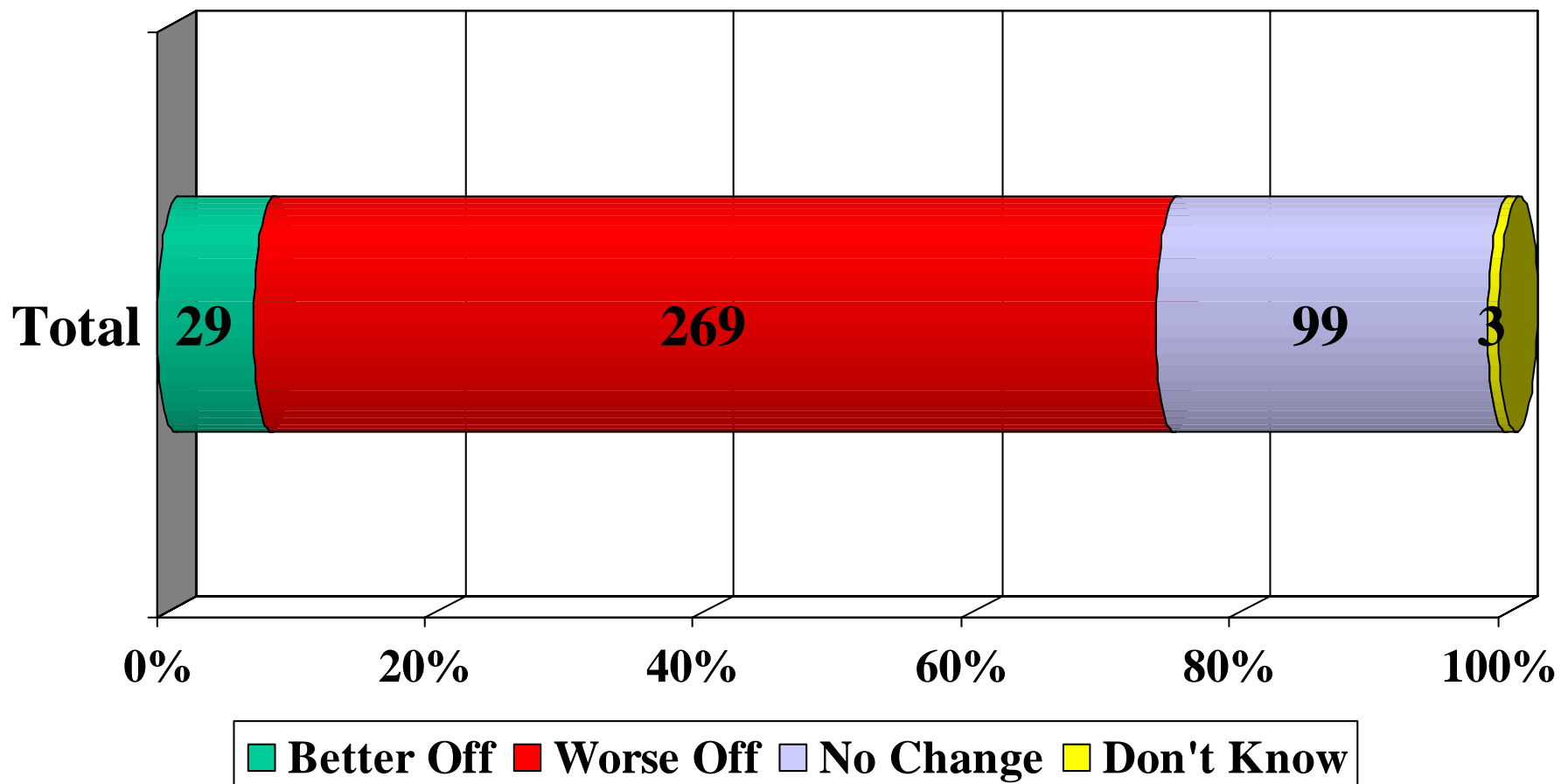
# **AMC District Meetings**

Polling attendees of public  
perception

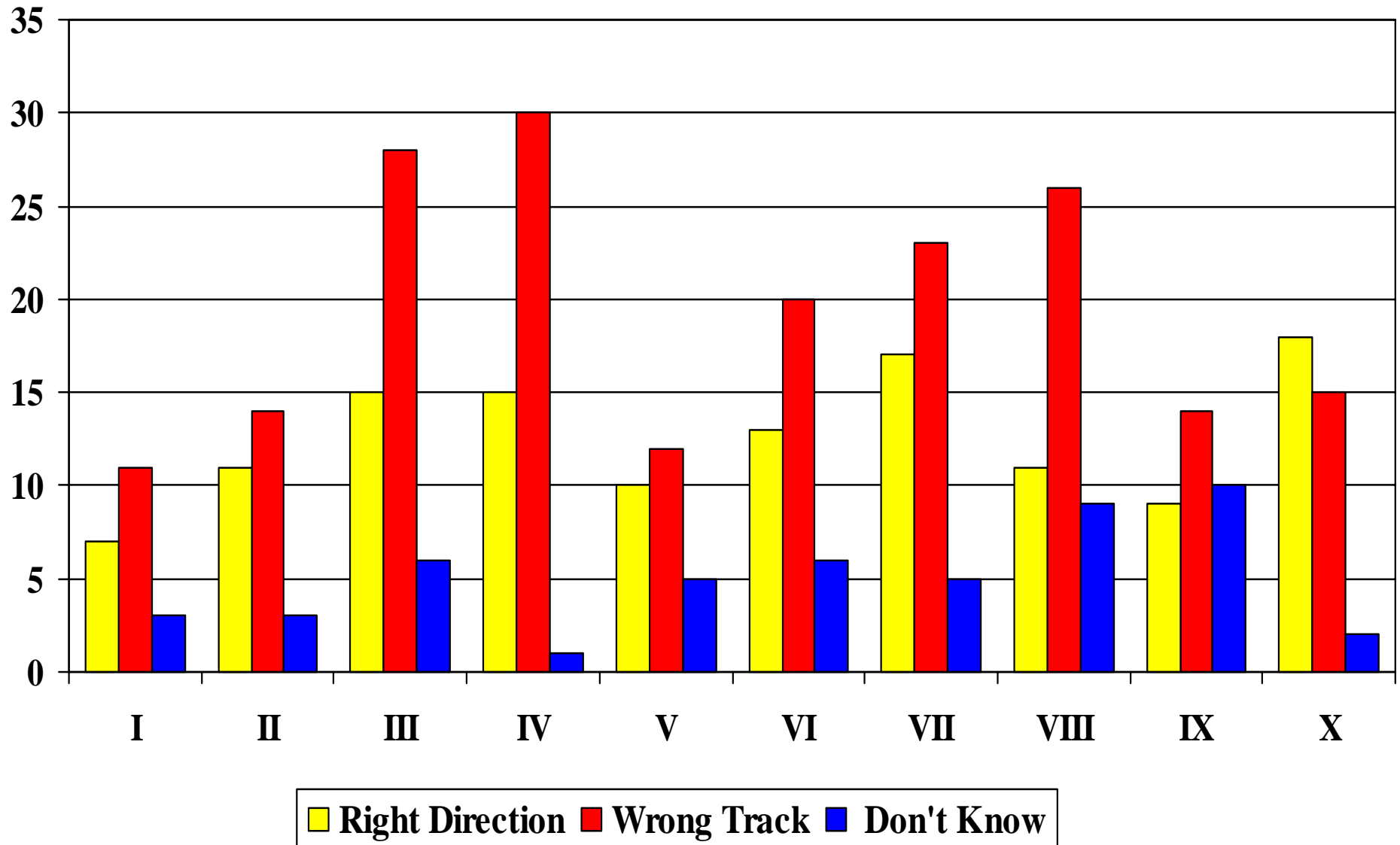
# 1. Would the public say their household is better off or worse off financially than one year ago?



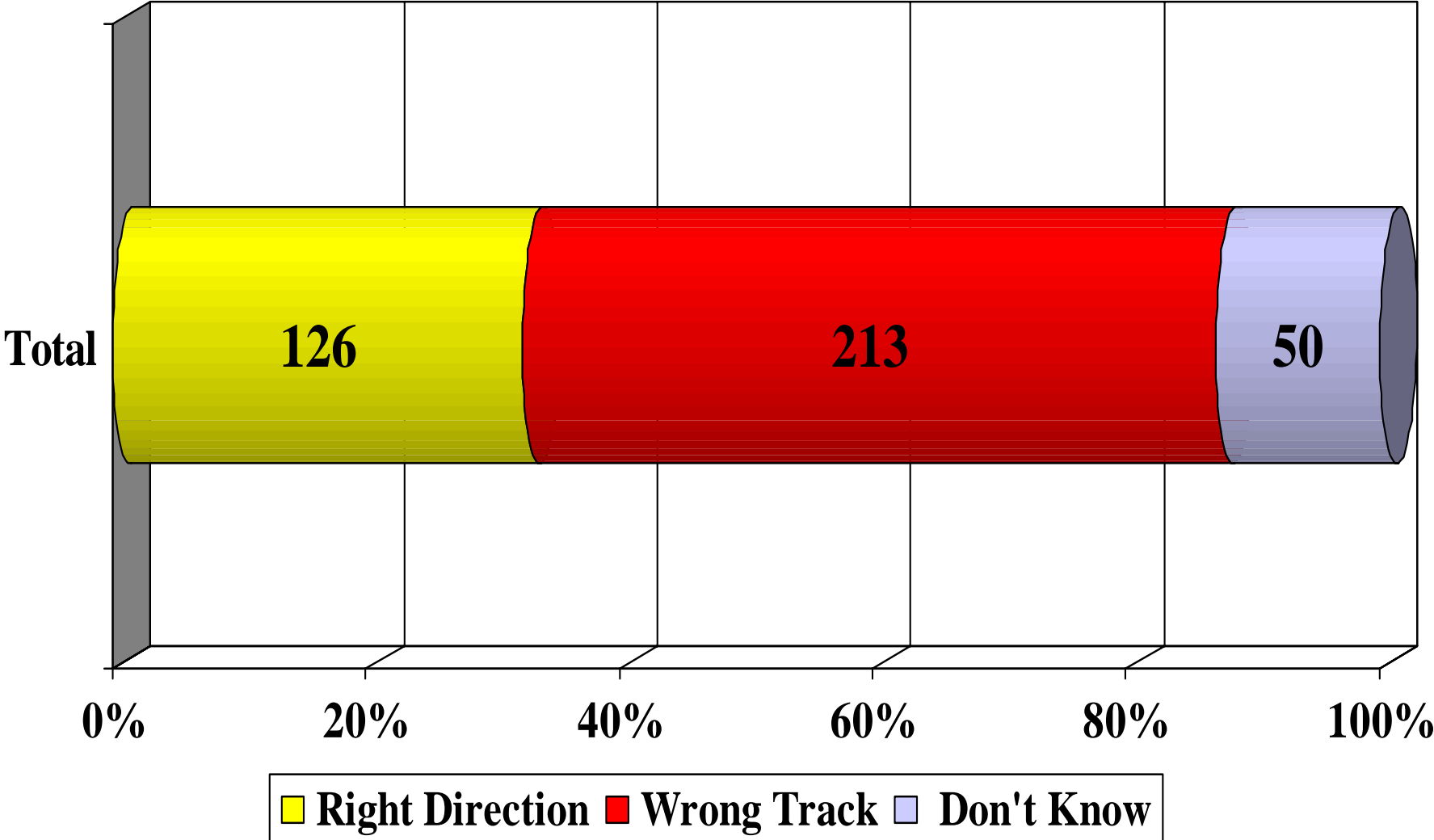
# 1. Would the public say their household is better off or worse off financially than one year ago?



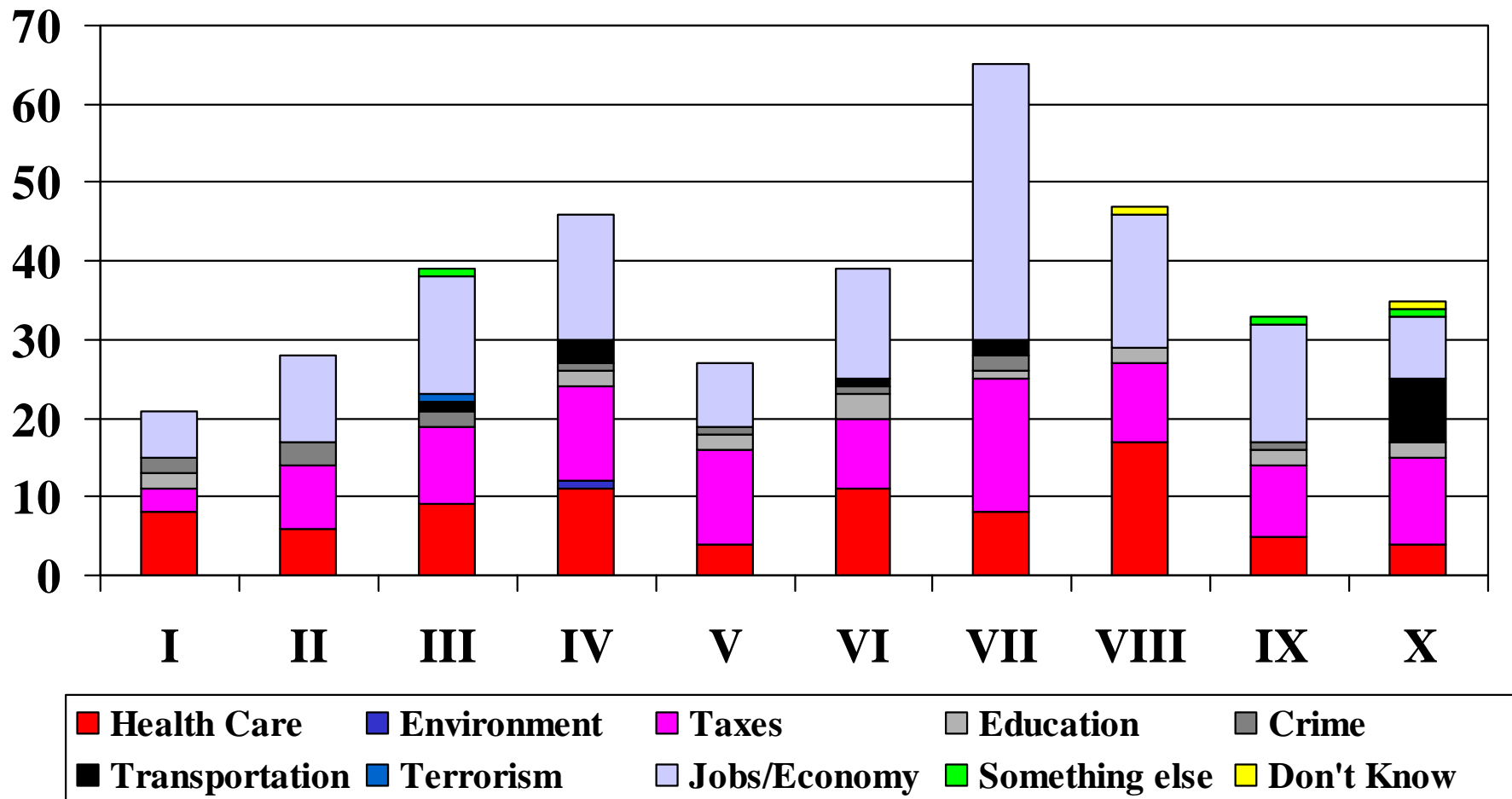
## 2. In the public's view, do they think Minnesota is heading in the right direction or is it off on the wrong track?



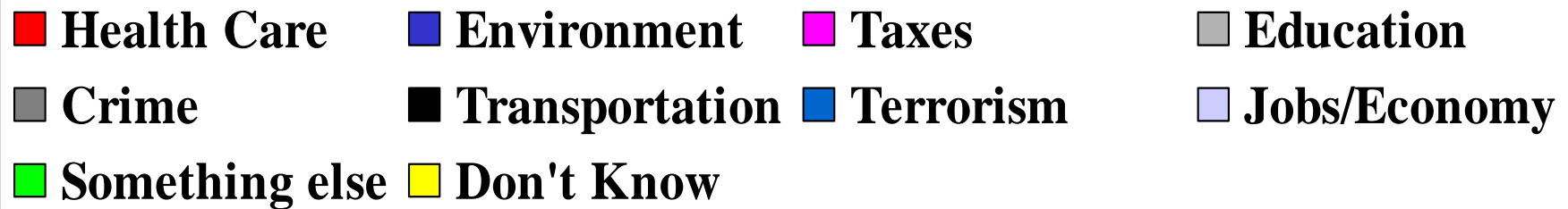
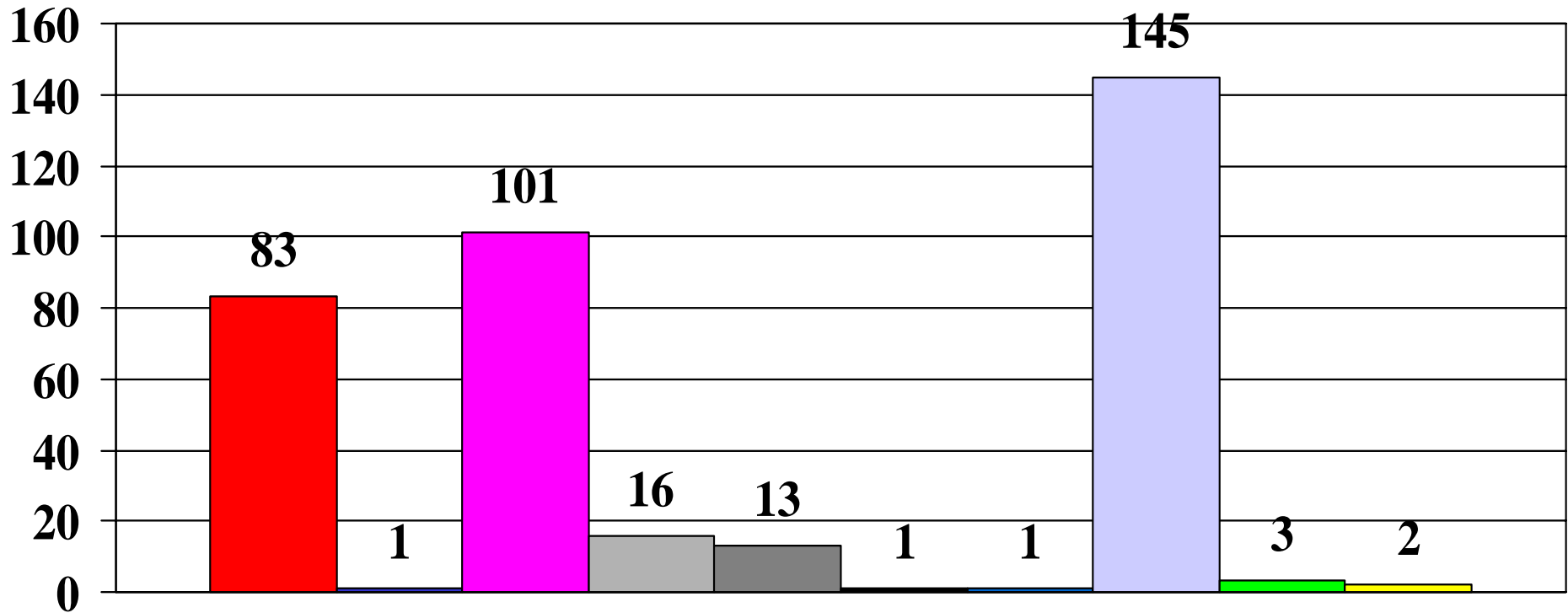
**2. In the public's view, do they think Minnesota is heading in the right direction or is it off on the wrong track?**



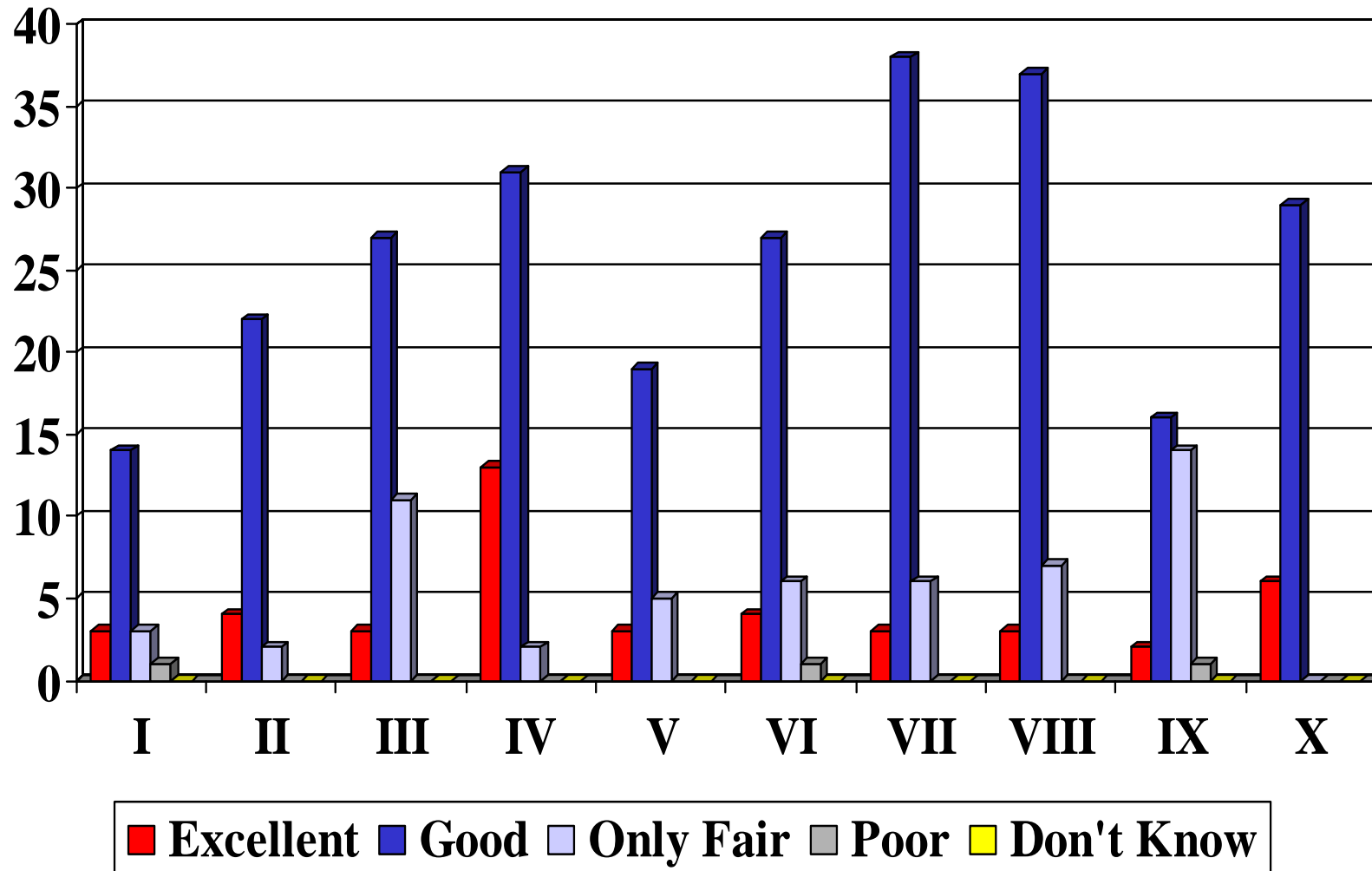
### 3. What does the public feel is the most serious issue facing the state today?



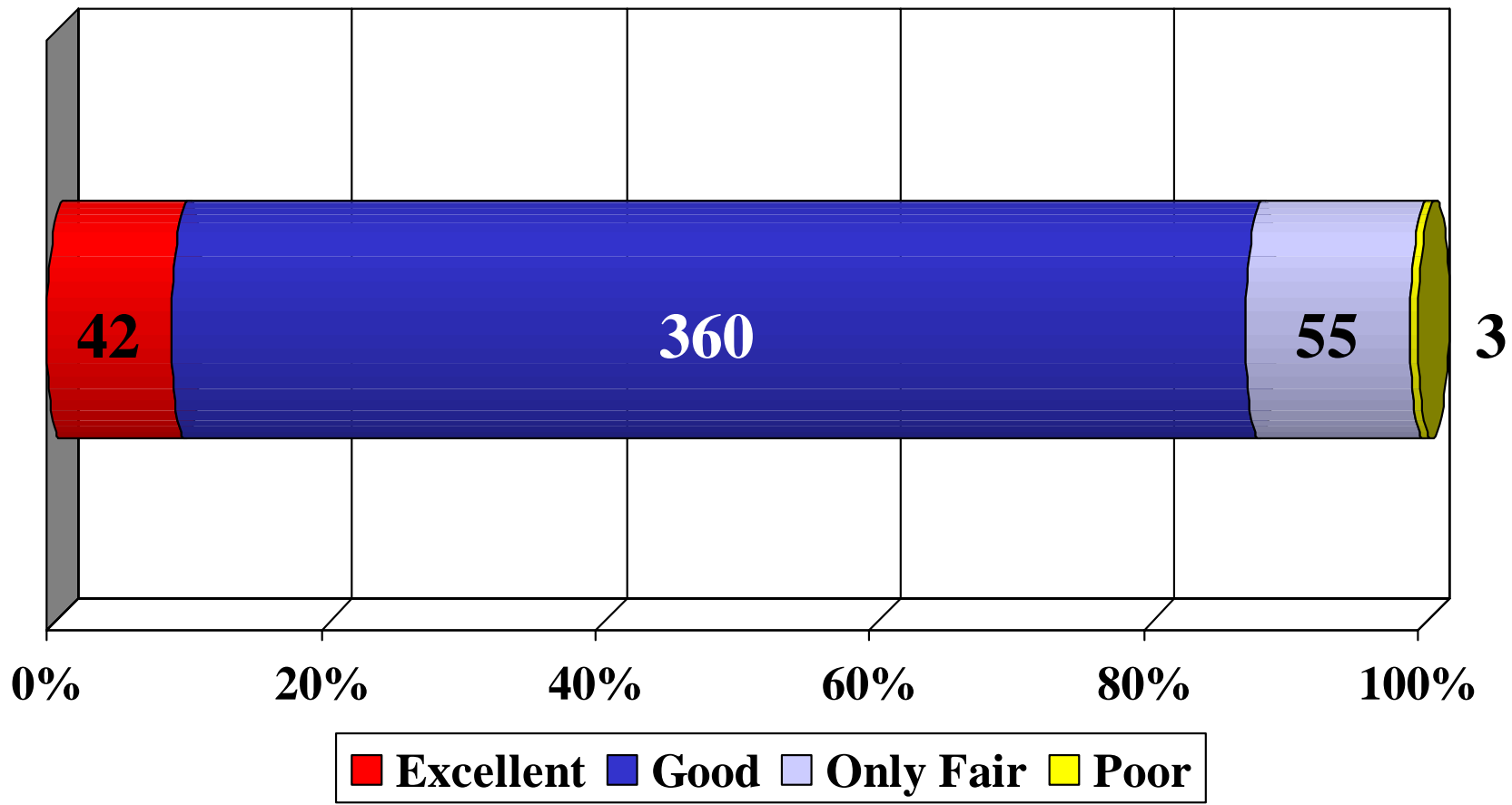
### 3. What does the public feel is the most serious issue facing the state today?



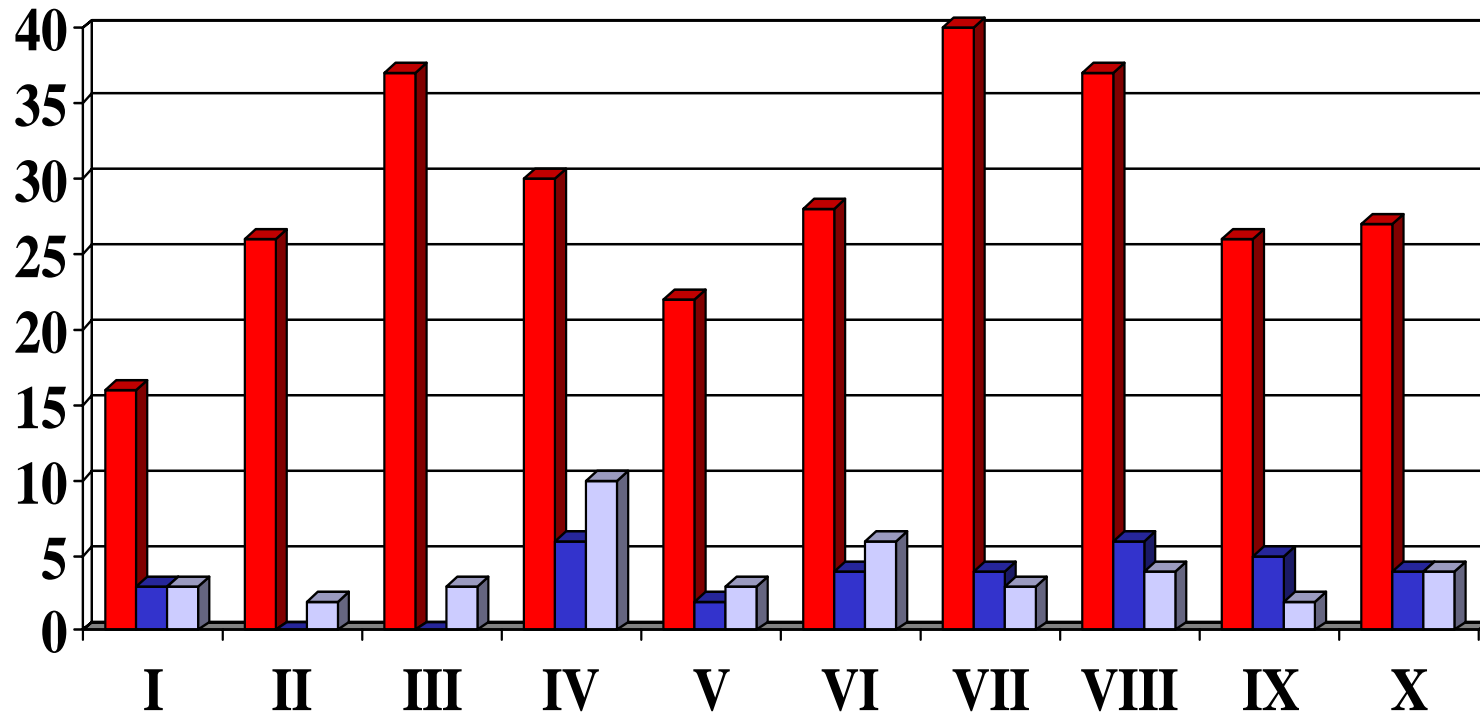
## 4. What would the public say about the quality of life in the community where they live? Is it...



# 4. What would the public say about the quality of life in the community where they live? Is it...



## 5. Which of the following statements best describes the public's feelings about taxes in Minnesota?

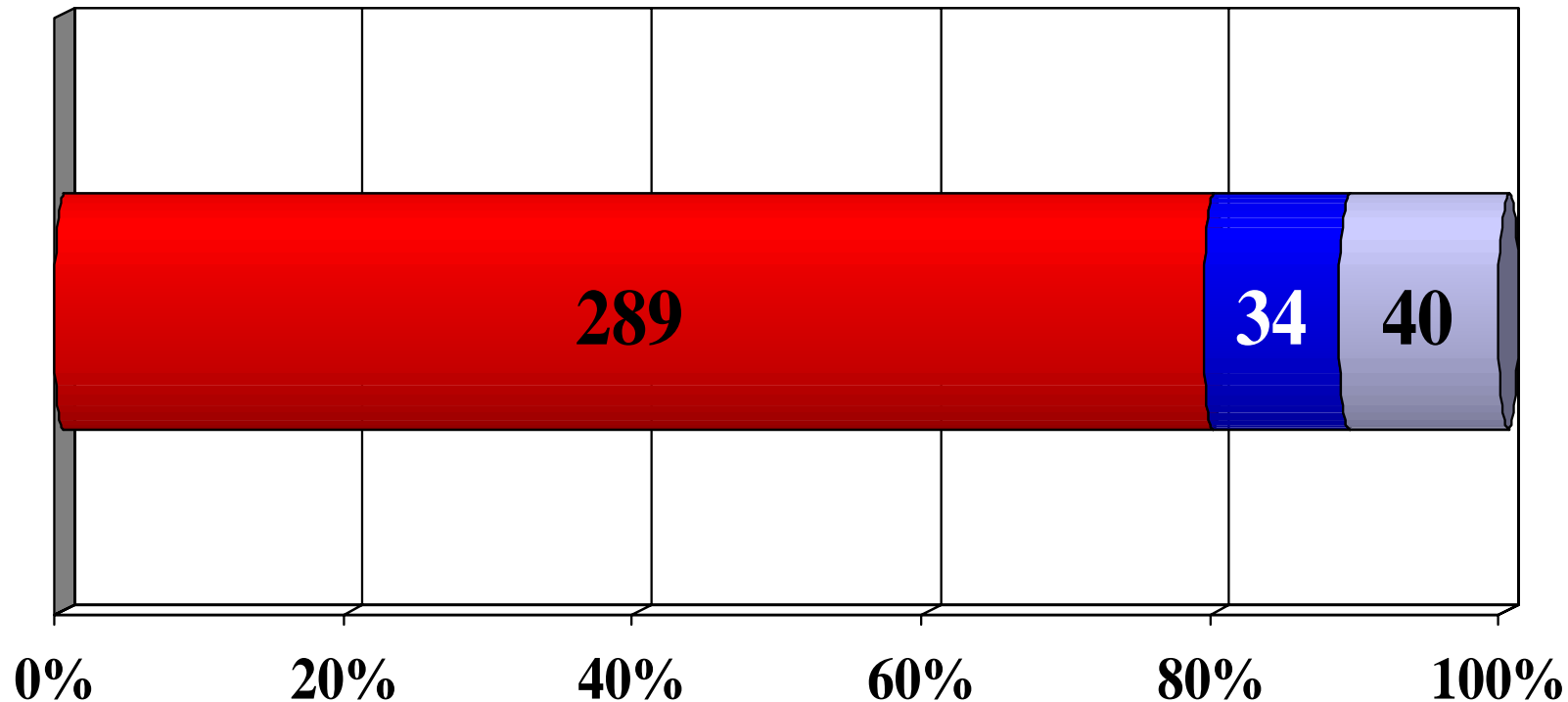


**■ The tax burden is too high**

**■ They would pay more in taxes to improve some government services**

**■ The tax burden is about right**

## 5. Which of the following statements best describes the public's feelings about taxes in Minnesota?

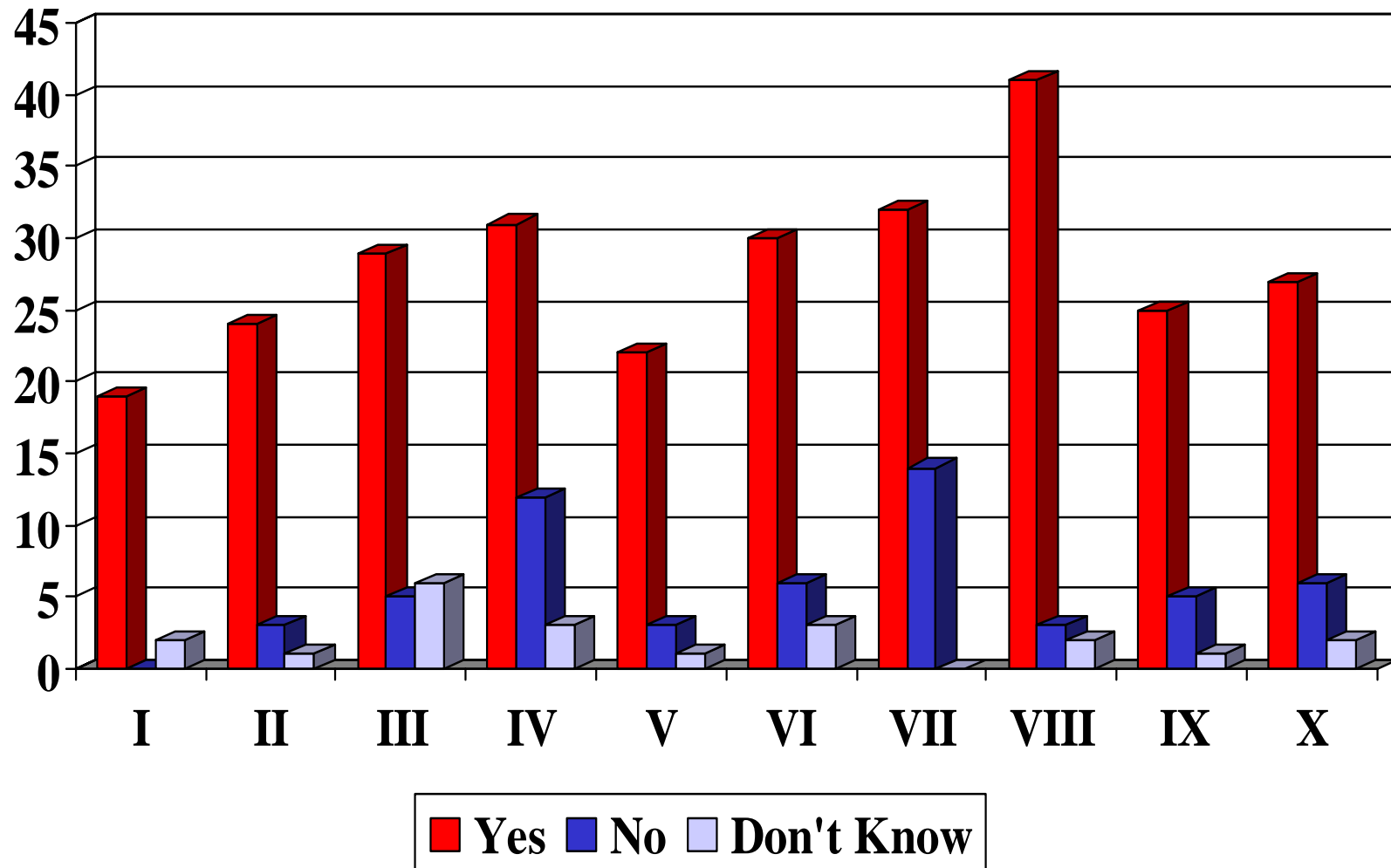


**■ The tax burden is too high**

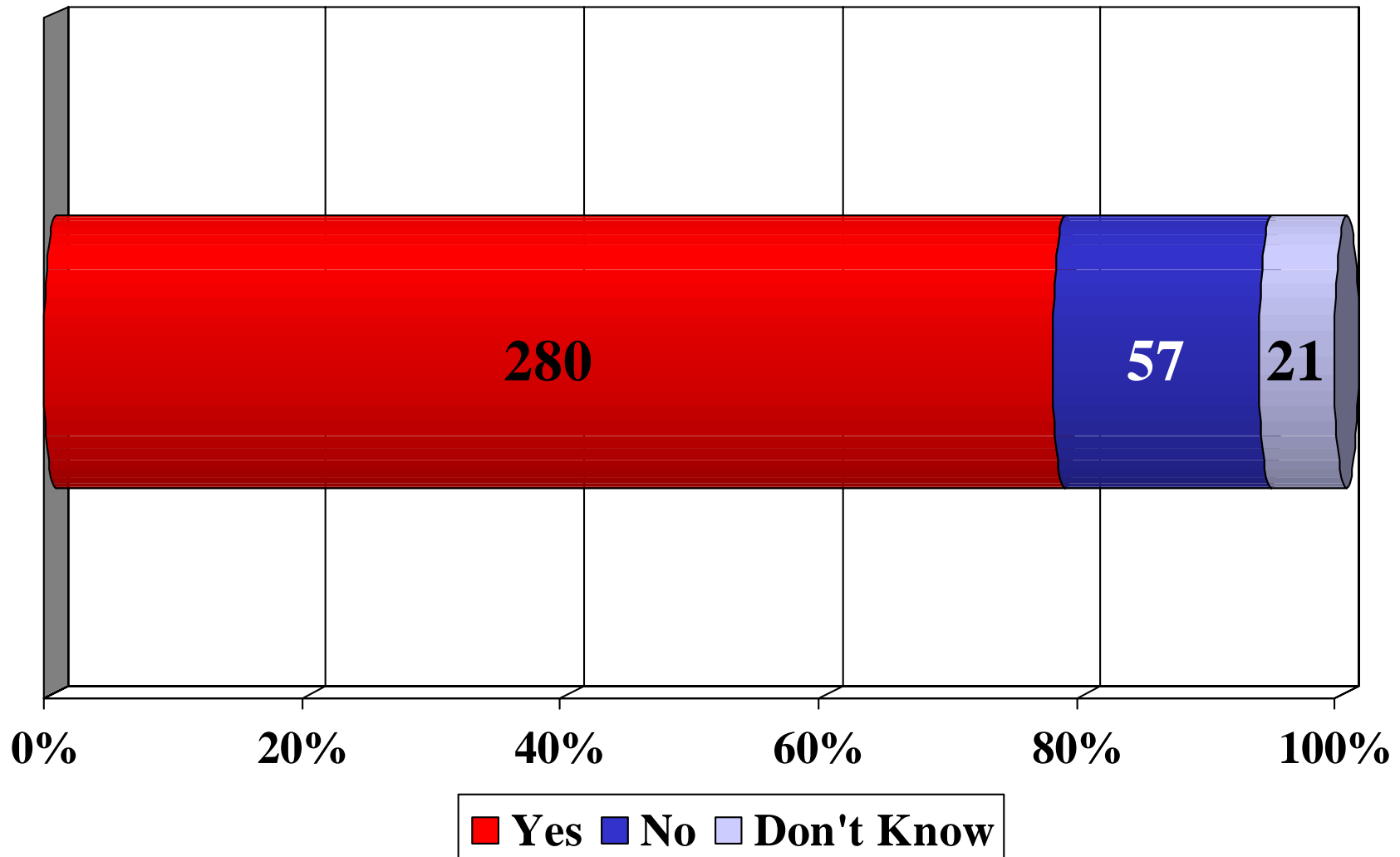
**■ They would pay more in taxes to improve some government services**

**■ The tax burden is about right**

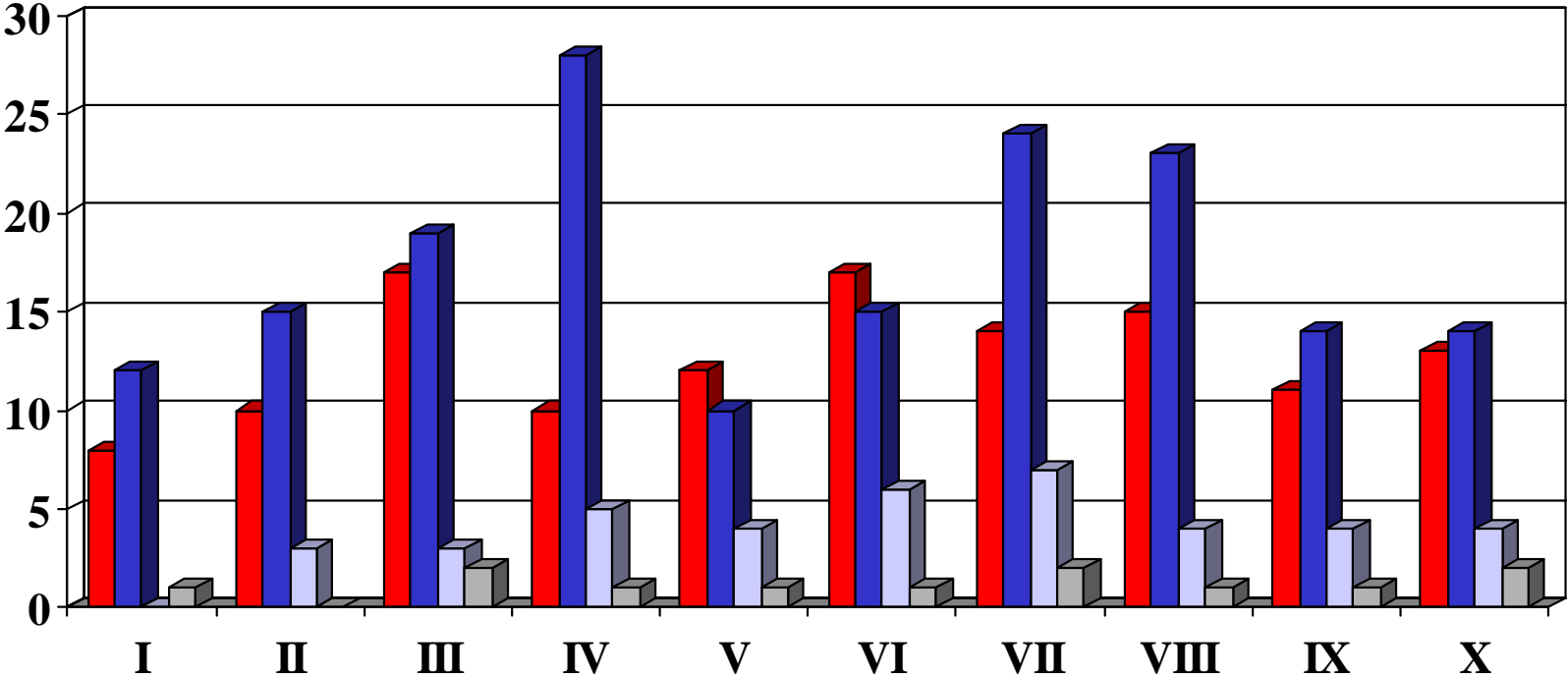
## 6. Would the public say the overall tax burden increased during the past three years?



## 6. Would the public say the overall tax burden increased during the past three years?

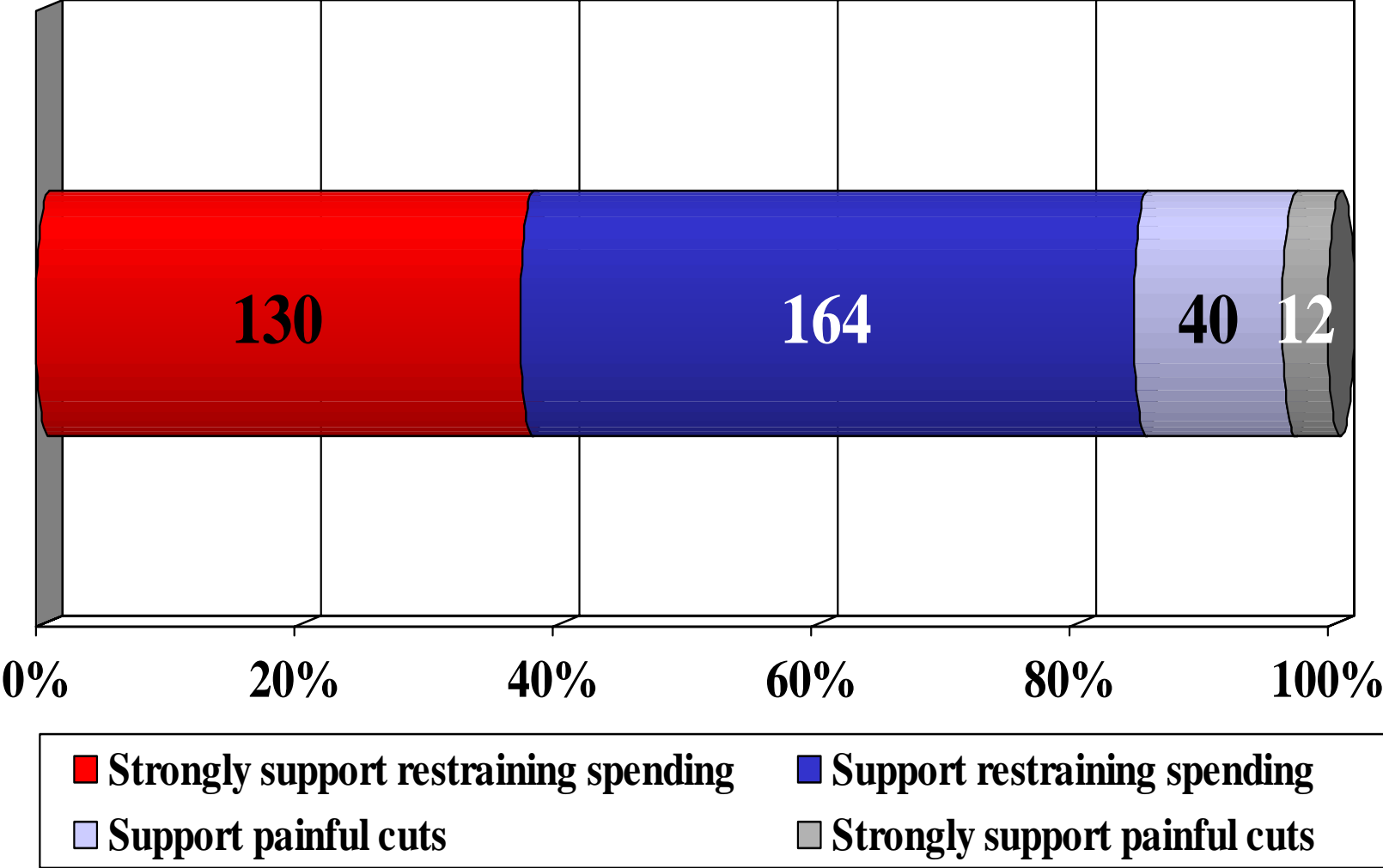


**7. Thinking about the budget problems that facing state & local government in Minnesota, some people believe that government needs to restrain spending and find new ways to deliver services. Others fear that budget problems will result in painful cuts in services to Minnesotans. Which position is closest to the public viewpoint?**

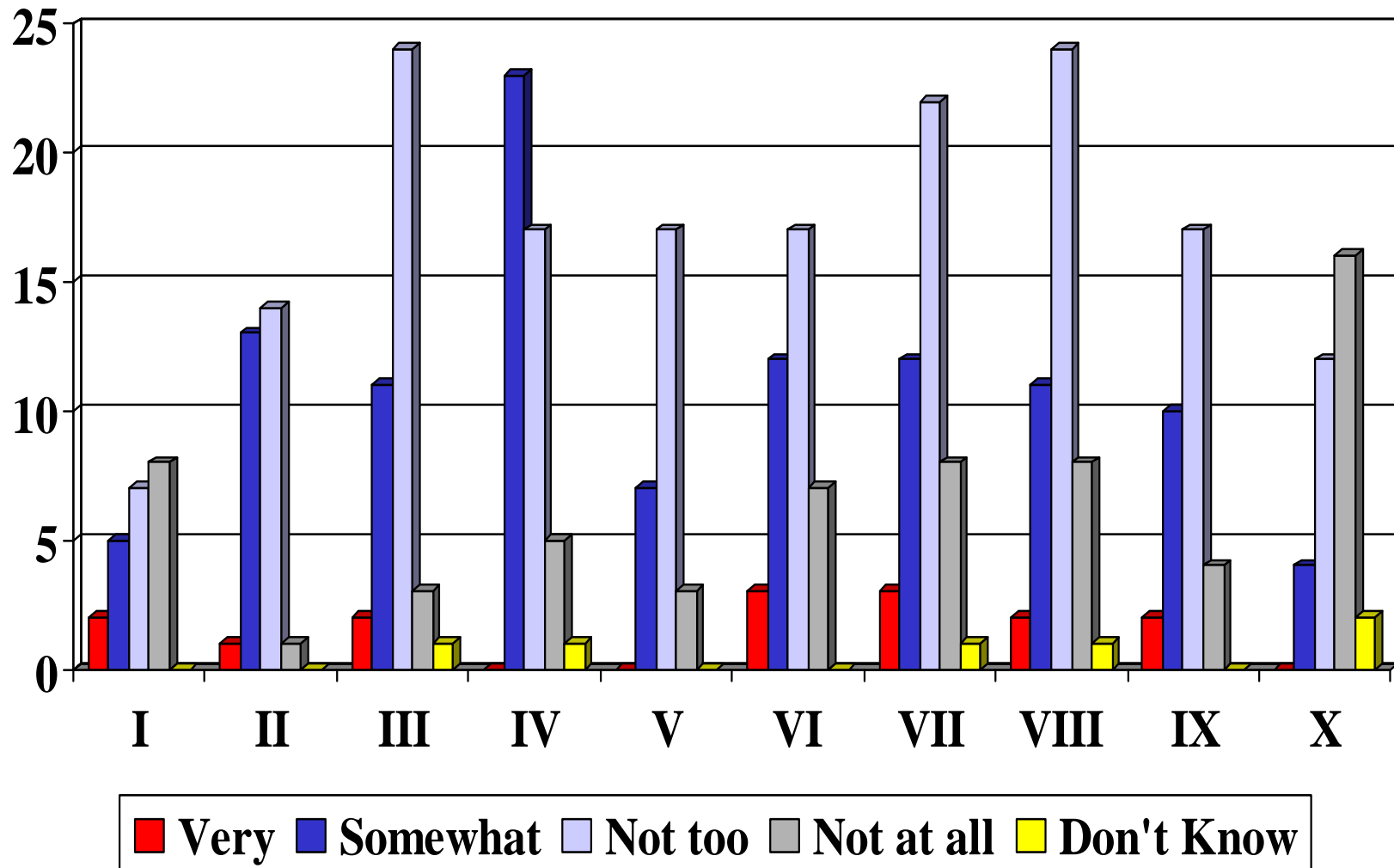


<span style="color: red;">■</span> Strongly support restraining spending	<span style="color: blue;">■</span> Support restraining spending
<span style="color: lightblue;">■</span> Support painful cuts	<span style="color: grey;">■</span> Strongly support painful cuts

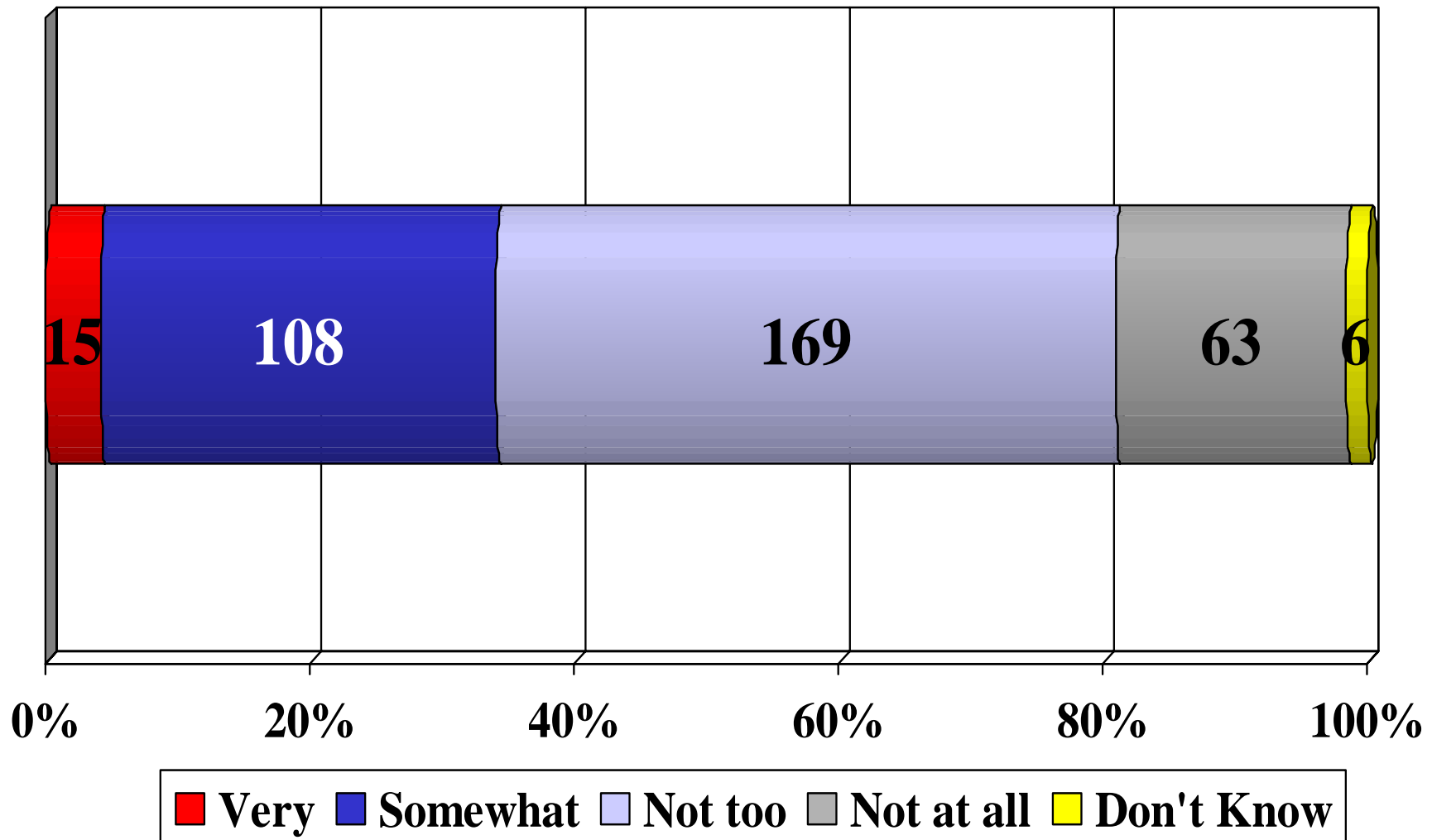
**7. Thinking about the budget problems that facing state & local government in Minnesota, some people believe that government needs to restrain spending and find new ways to deliver services. Others fear that budget problems will result in painful cuts in services to Minnesotans. Which position is closest to the public viewpoint?**



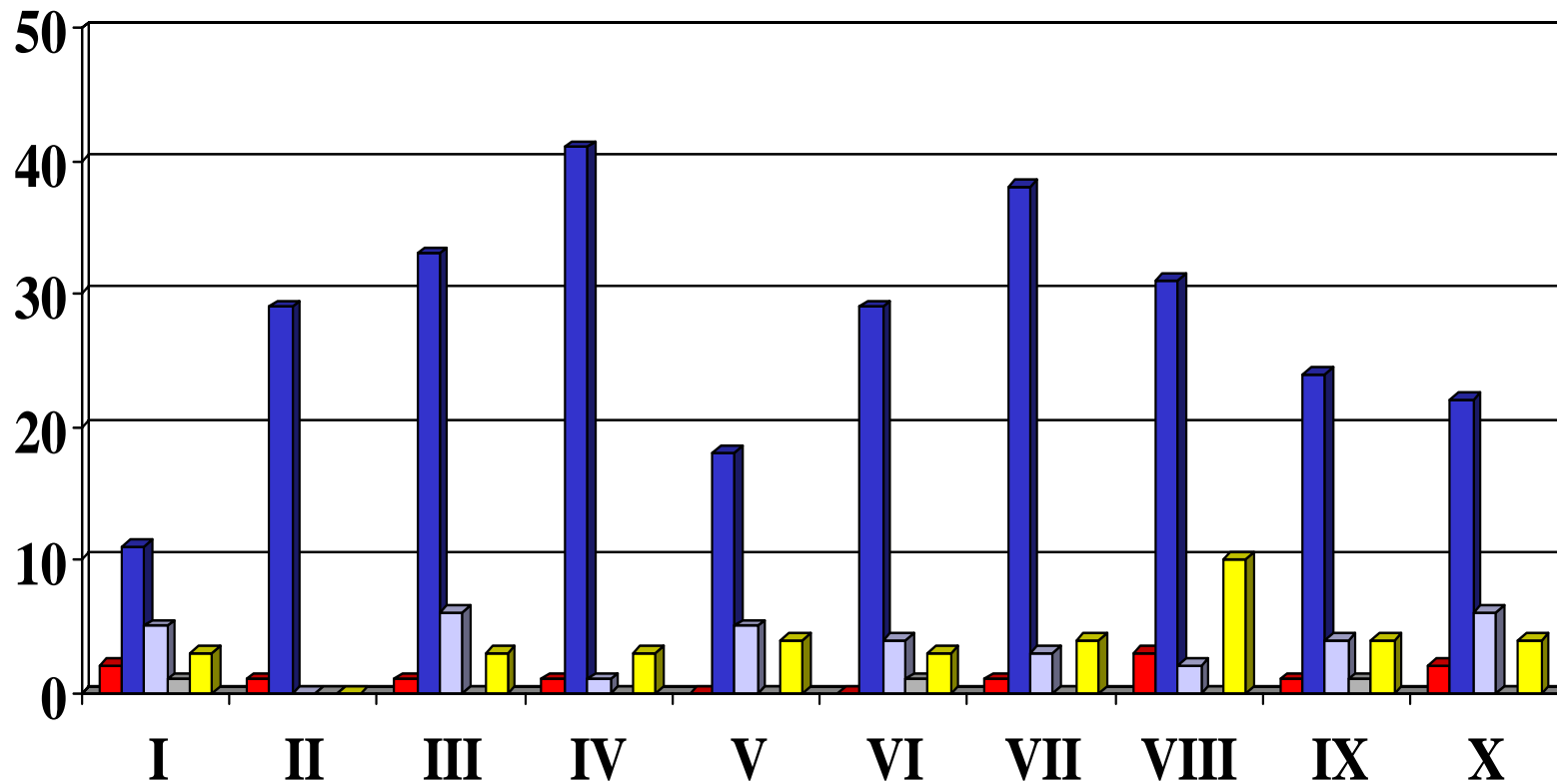
## 8. How informed does the public feel about your County Board and its activities?



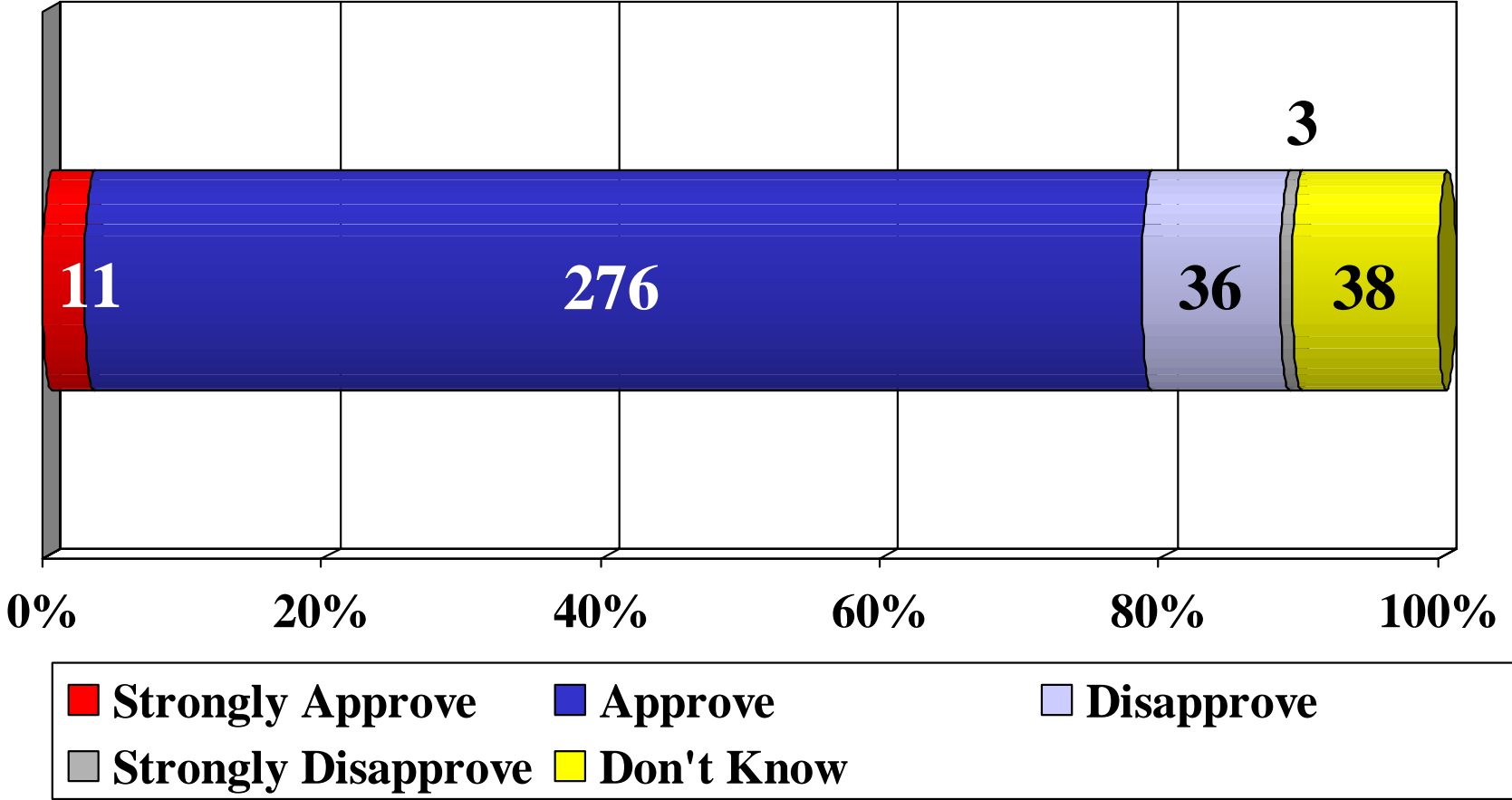
## 8. How informed does the public feel about your County Board and its activities?



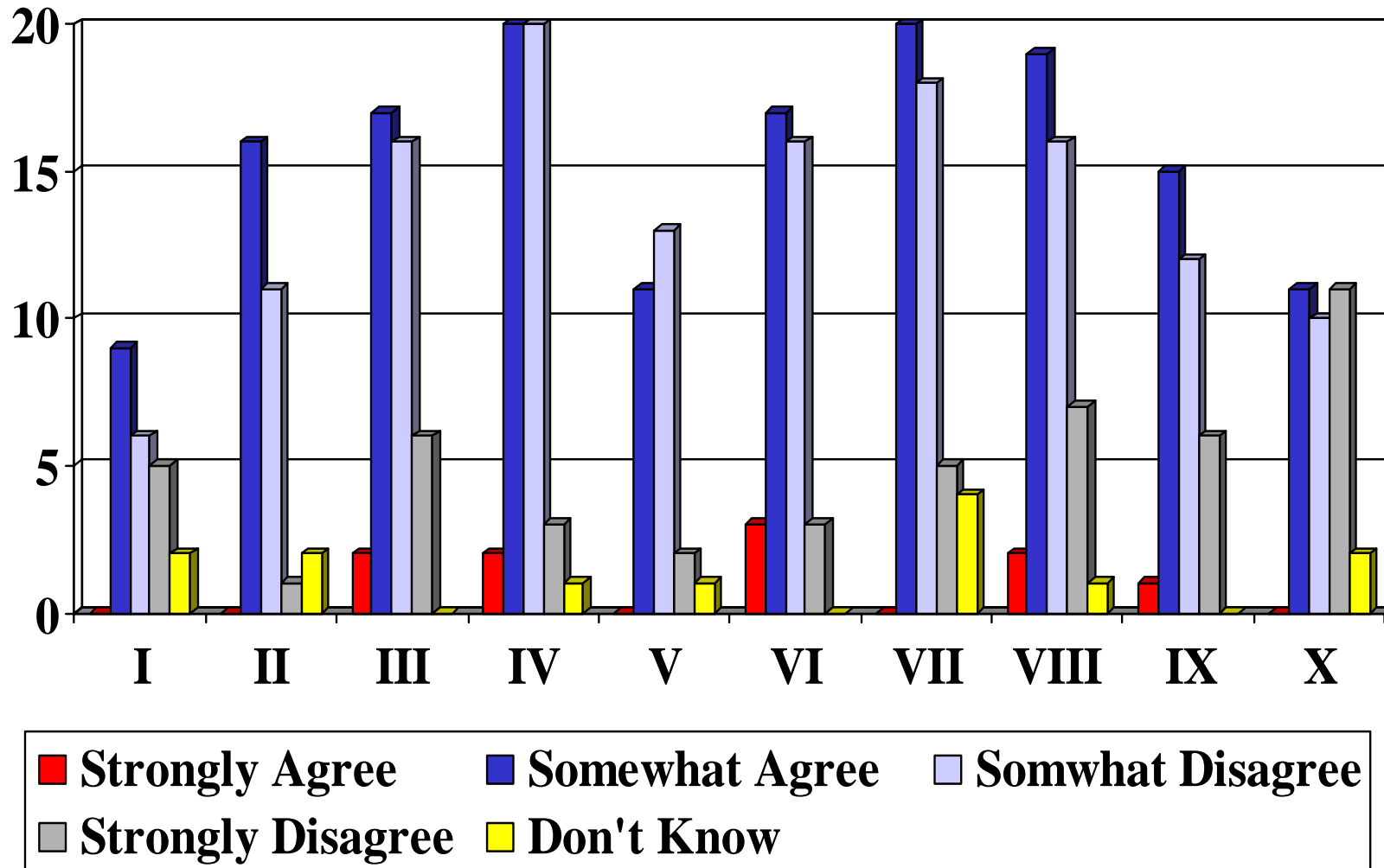
# 9. From what the public knows, do they approve or disapprove of the job the County Board is doing?



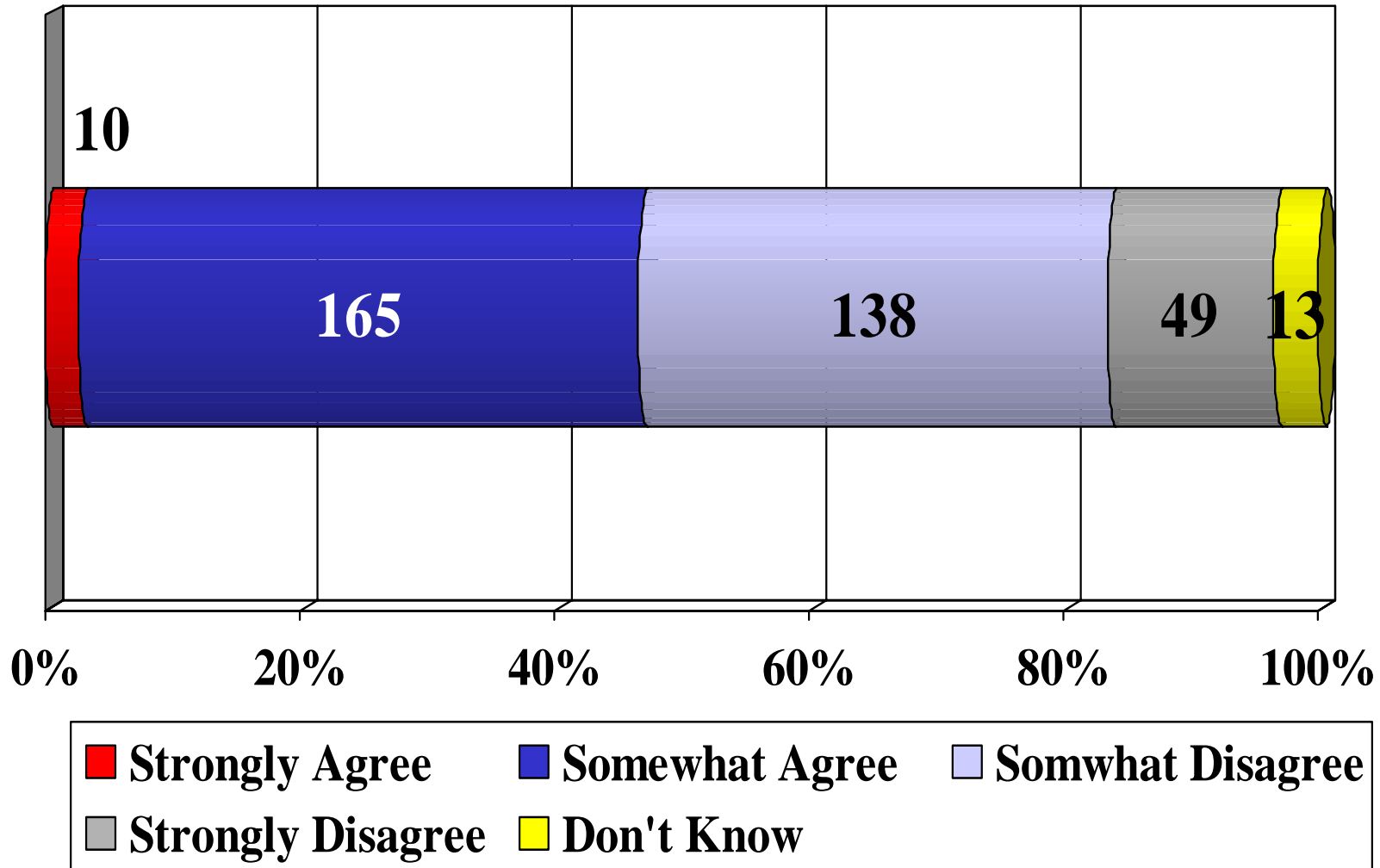
# 9. From what the public knows, do they approve or disapprove of the job the County Board is doing?



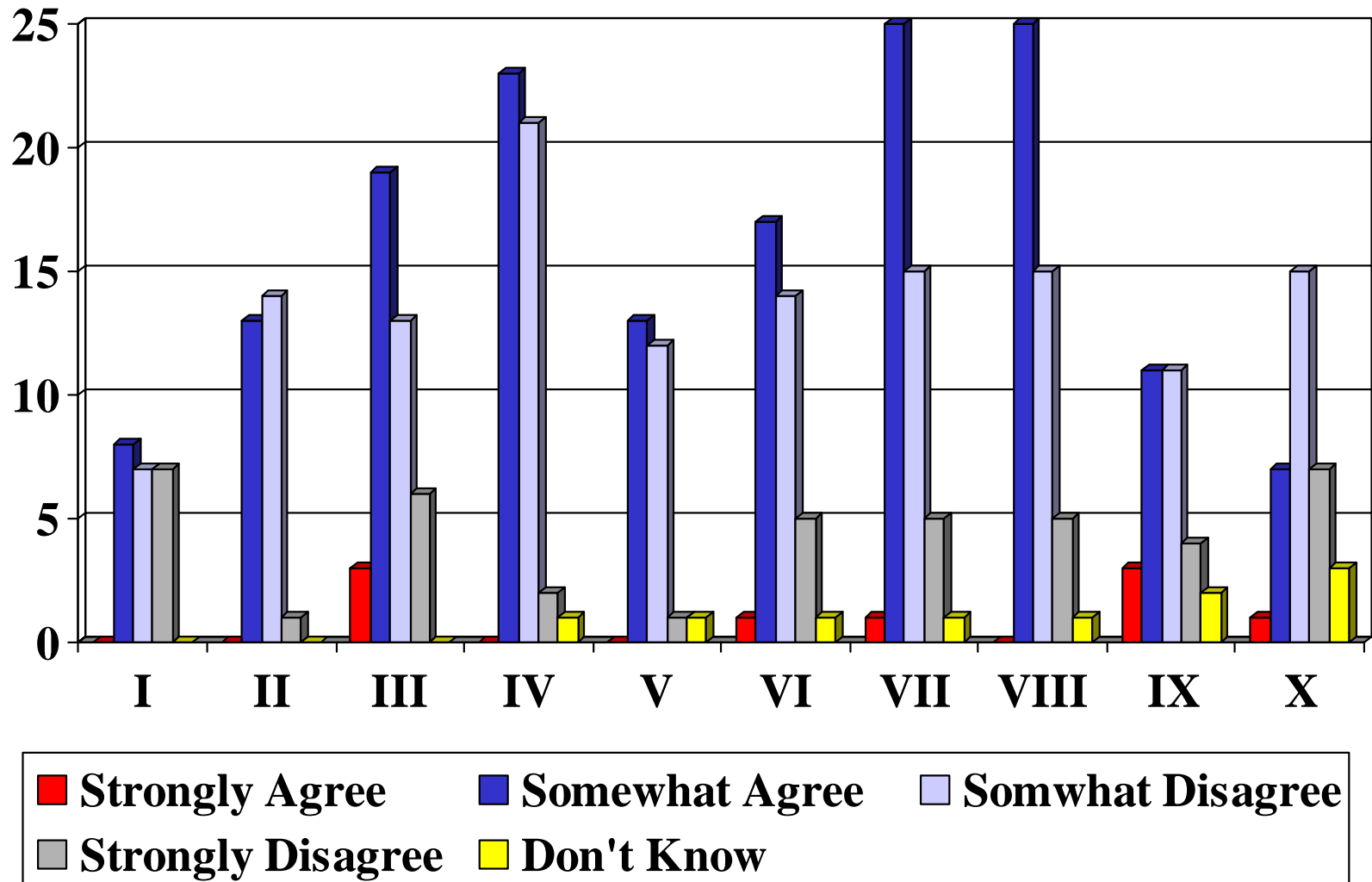
# 10. The public feels they have an impact on the way the County runs things in our area.



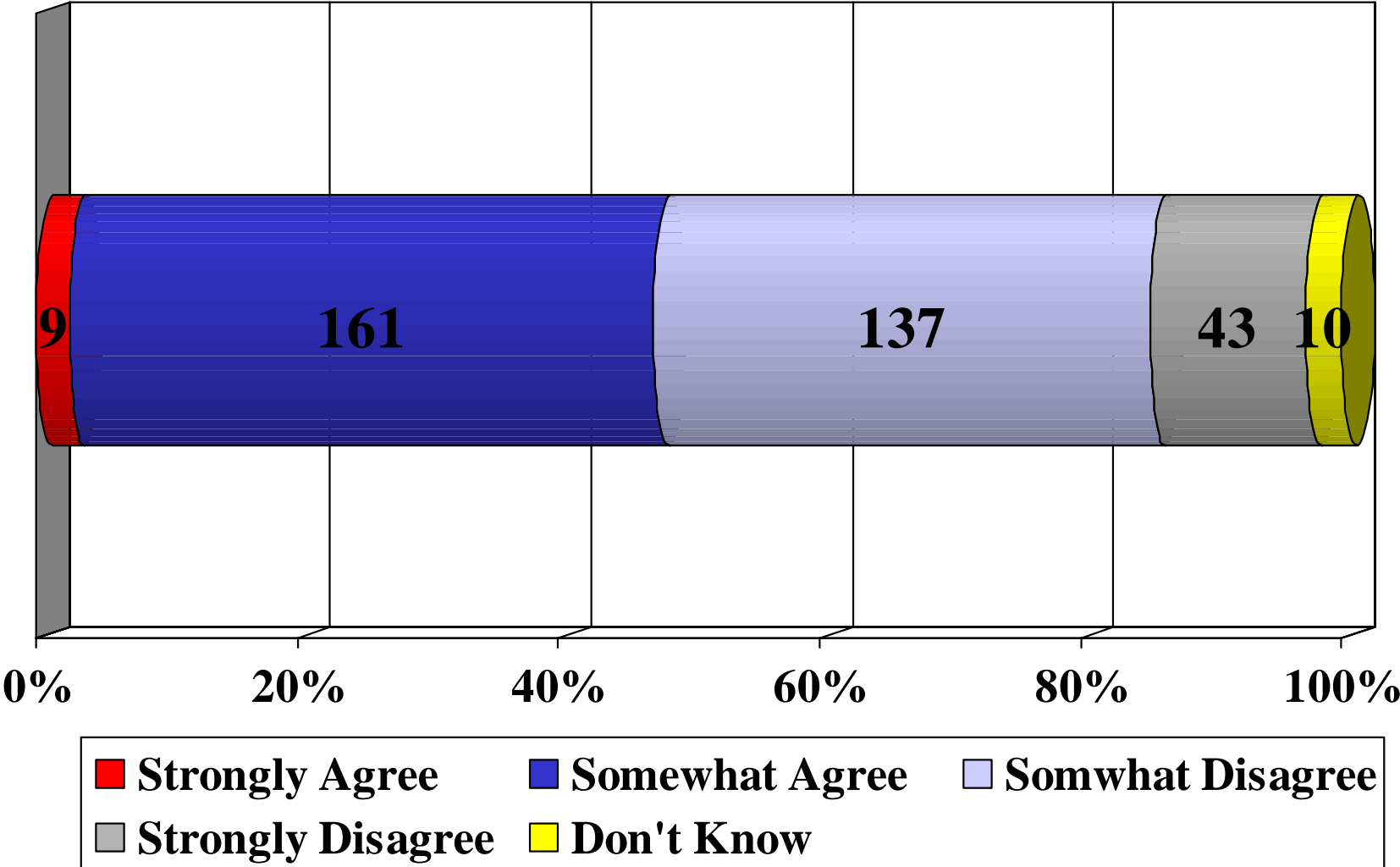
# 10. The public feels they have an impact on the way the County runs things in our area.



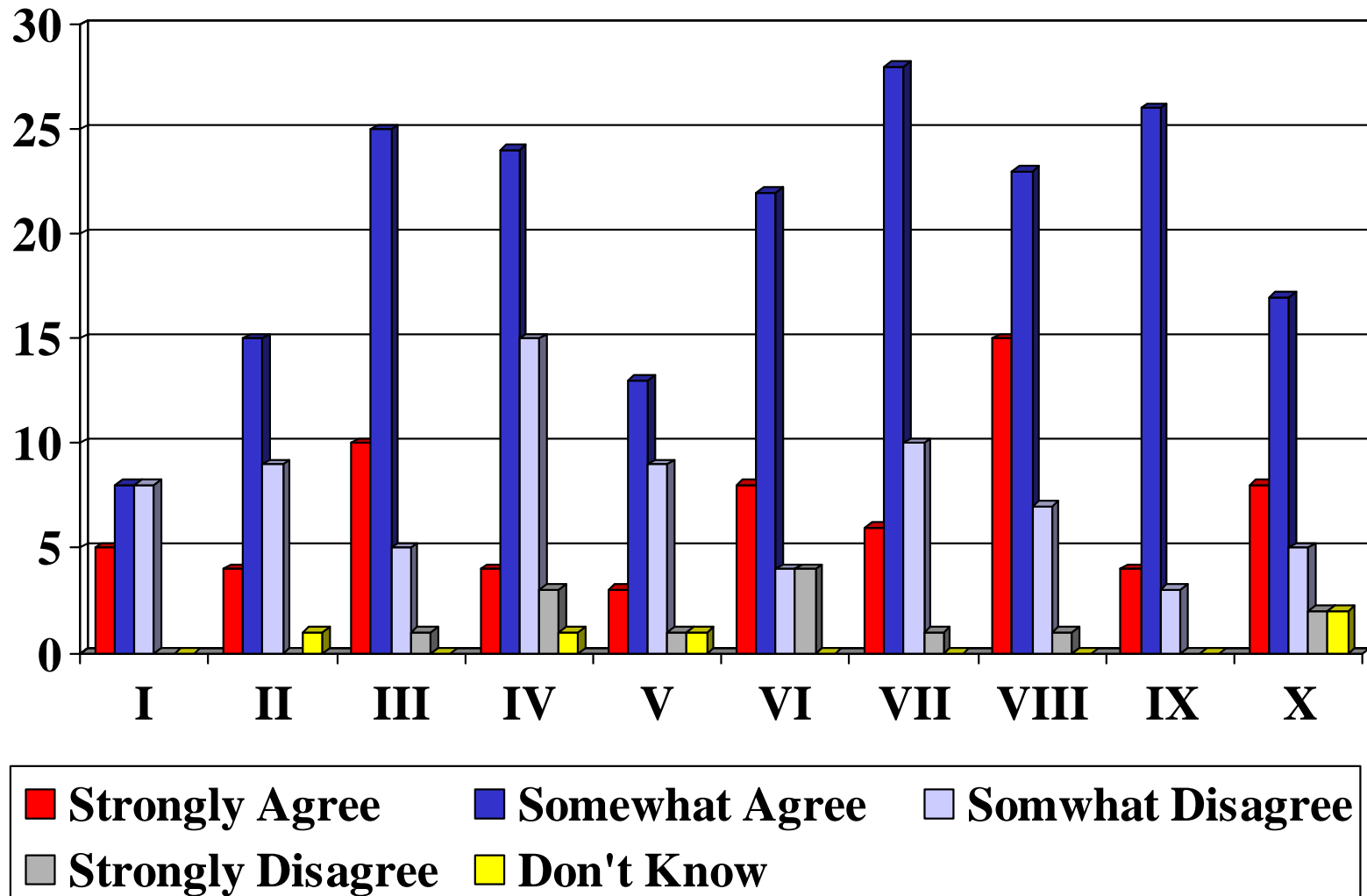
# 11. The public thinks that County government provides services in a cost-effective way.



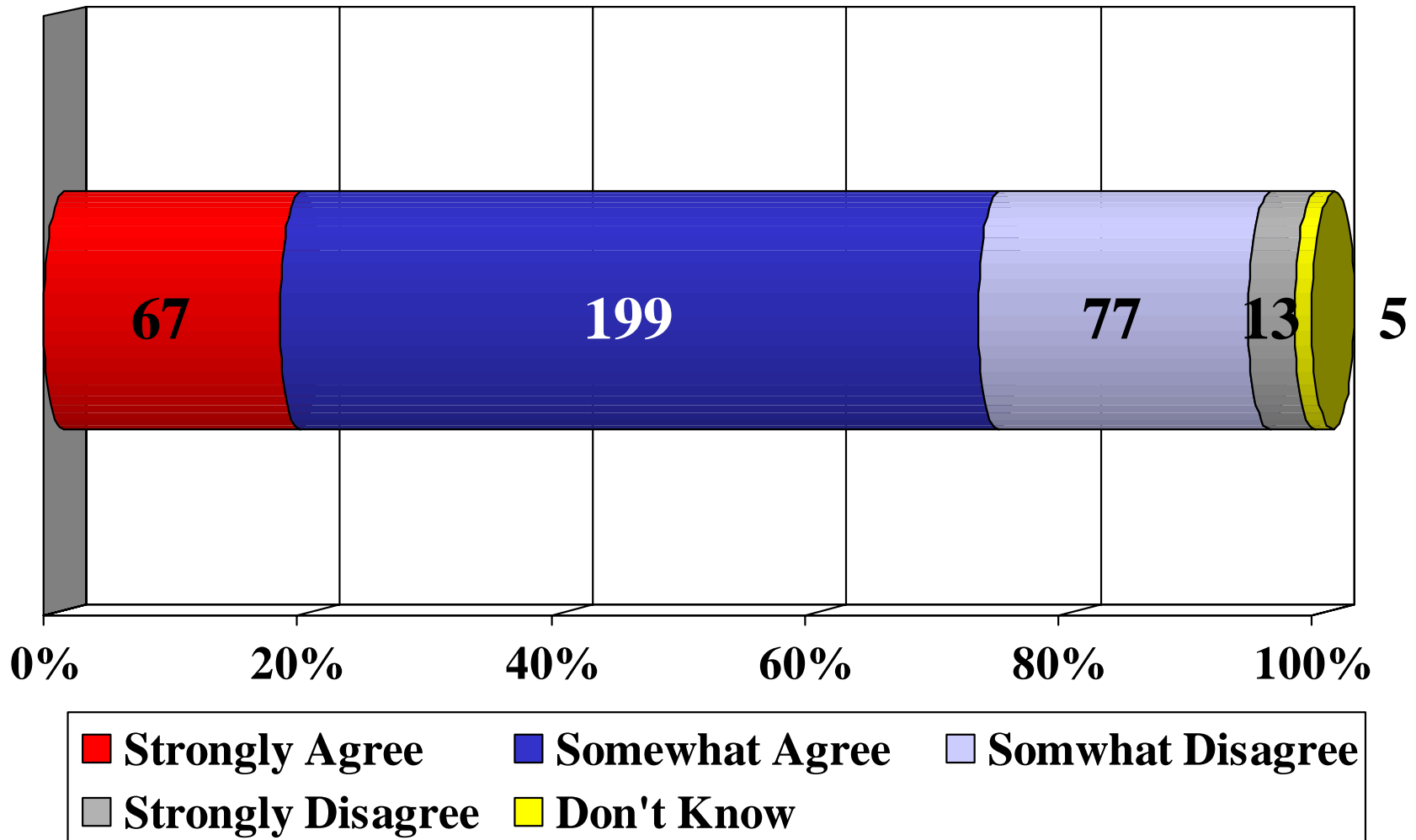
# 11. The public thinks that County government provides services in a cost-effective way.



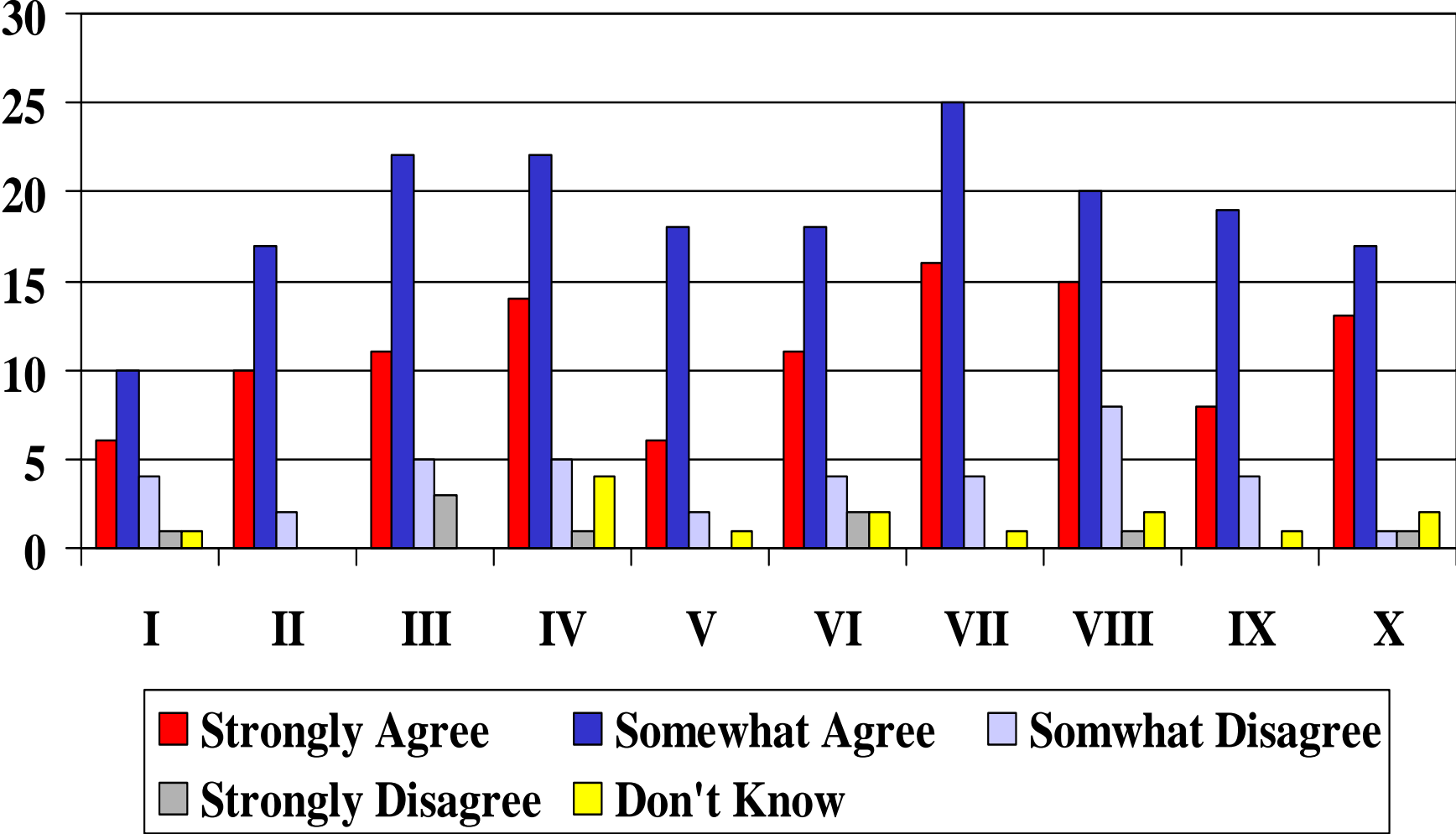
## 12. The public feels that they don't hear about big issues facing our county until it is too late.



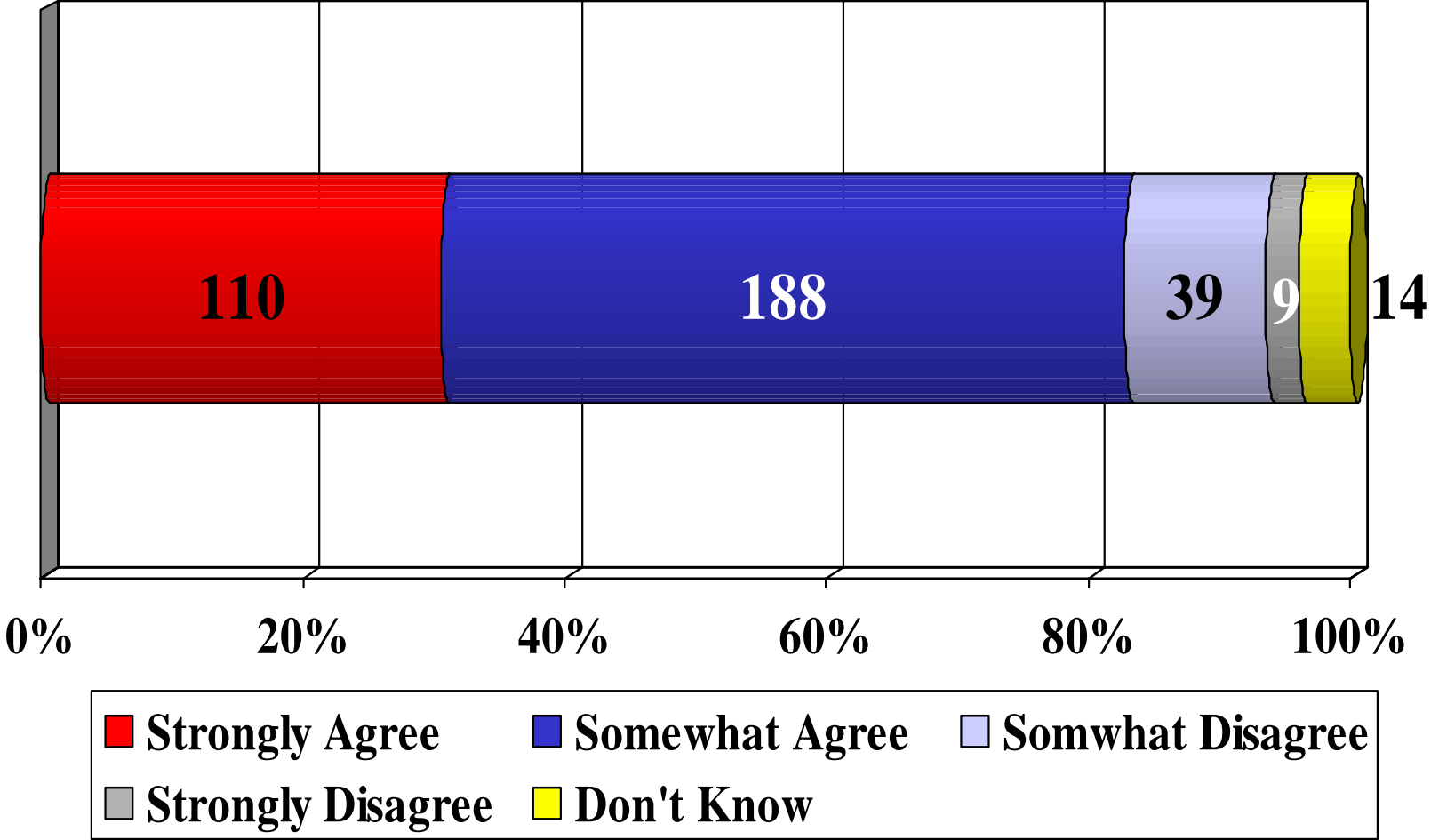
## 12. The public feels that they don't hear about big issues facing our county until it is too late.



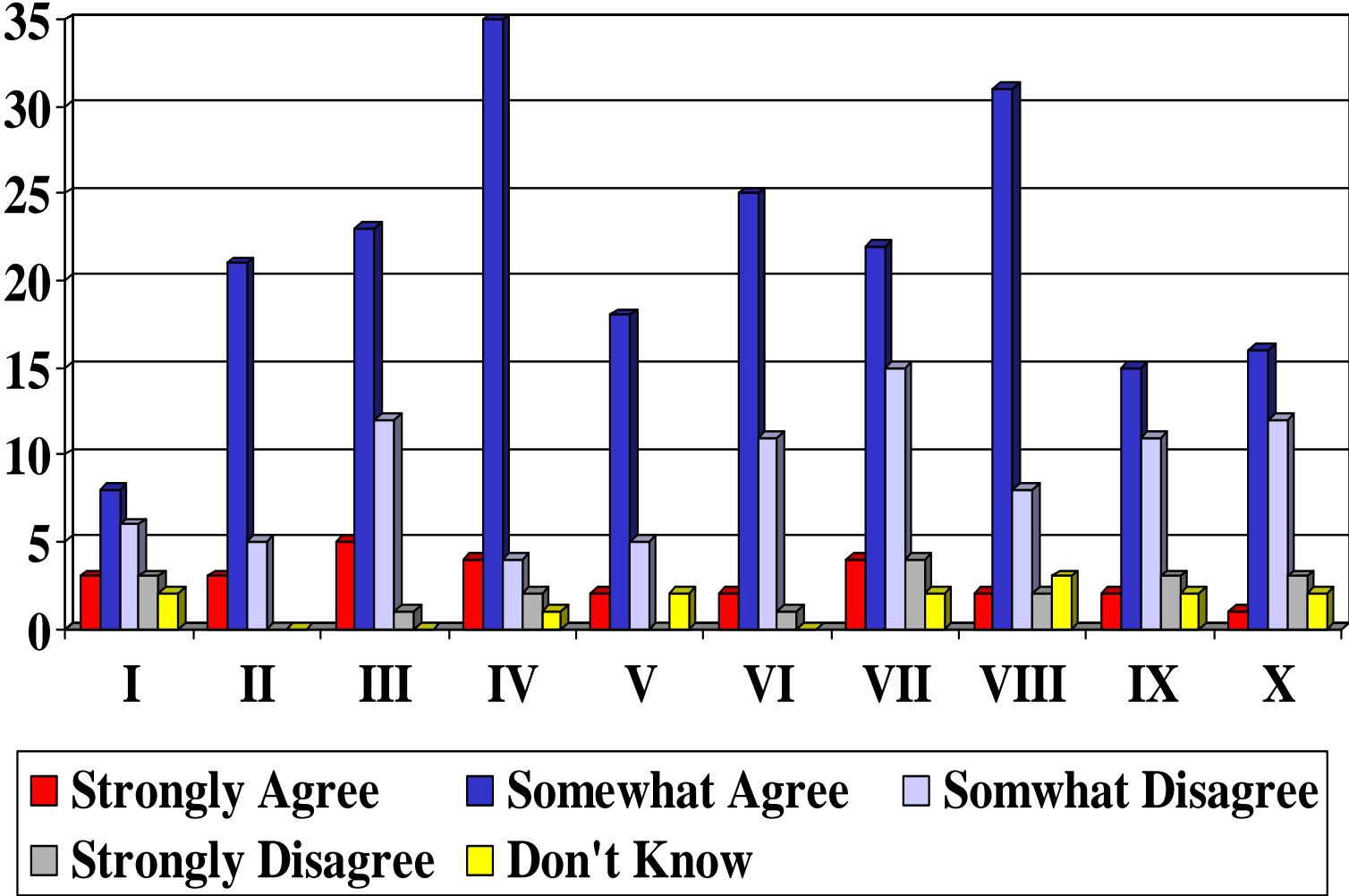
# 13. The public feels that there are too many unnecessary programs and services in our county.



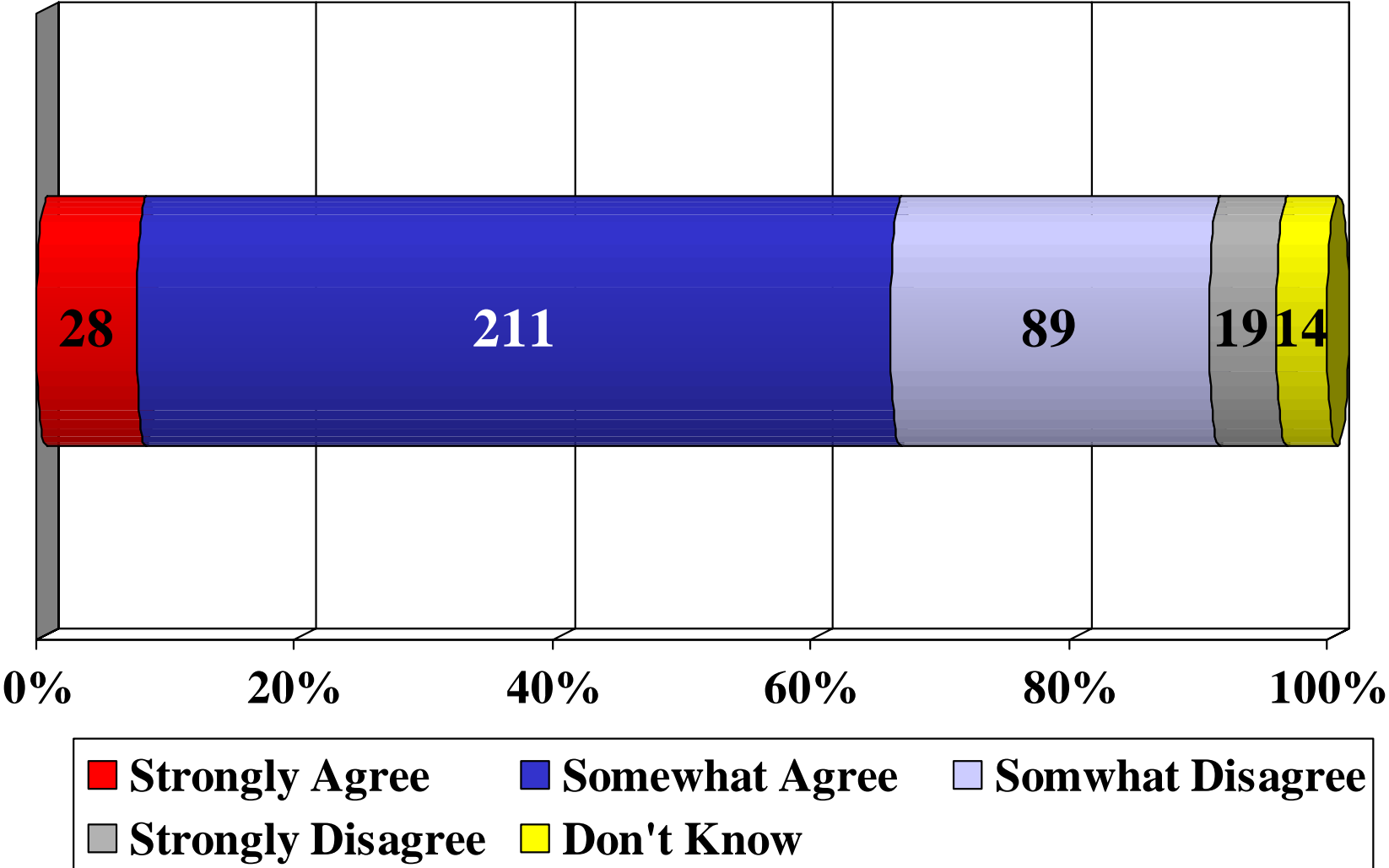
# 13. The public feels that there are too many unnecessary programs and services in our county.



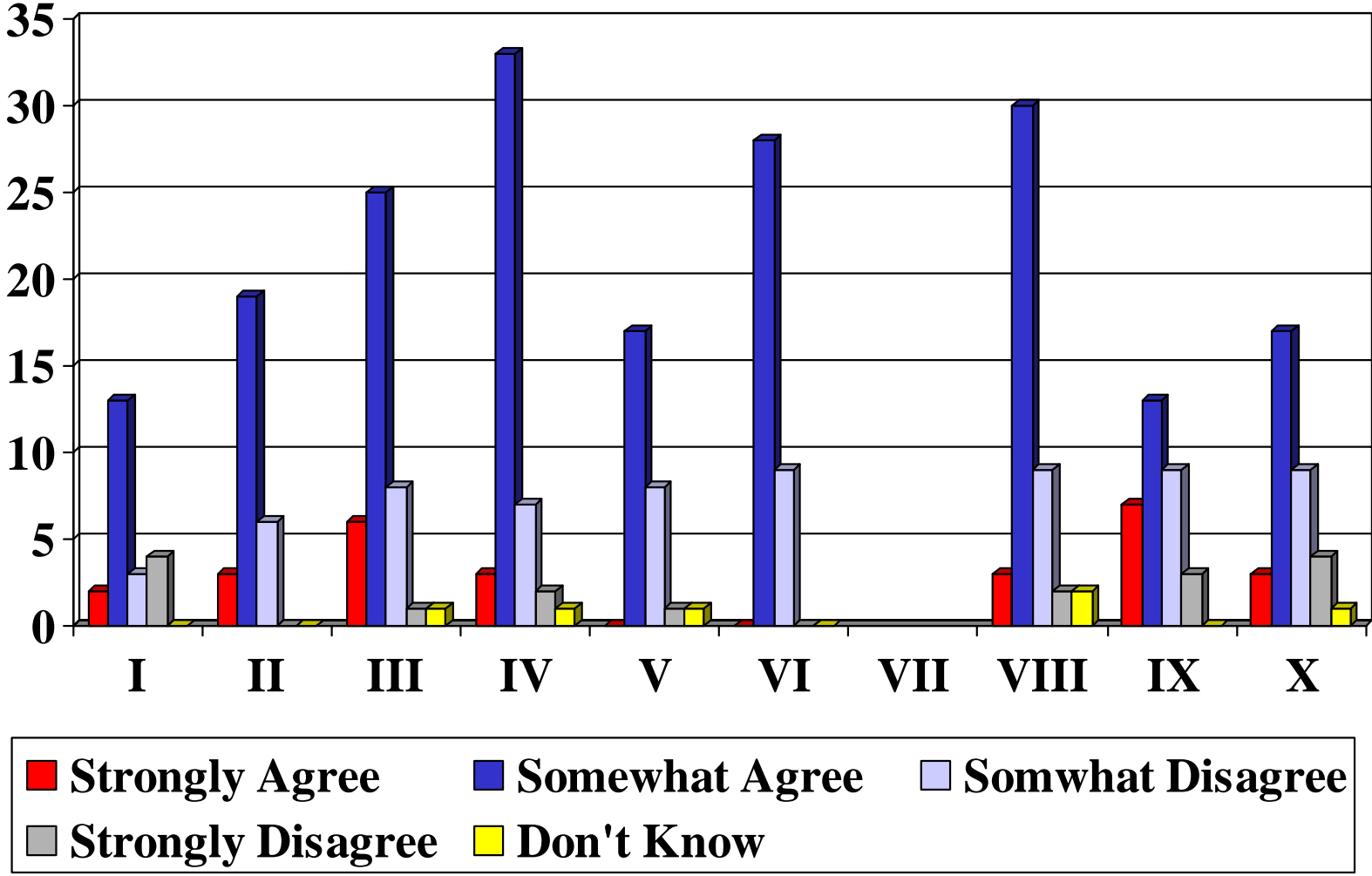
# 14. The public believes that the County Board responds effectively to budget problems.



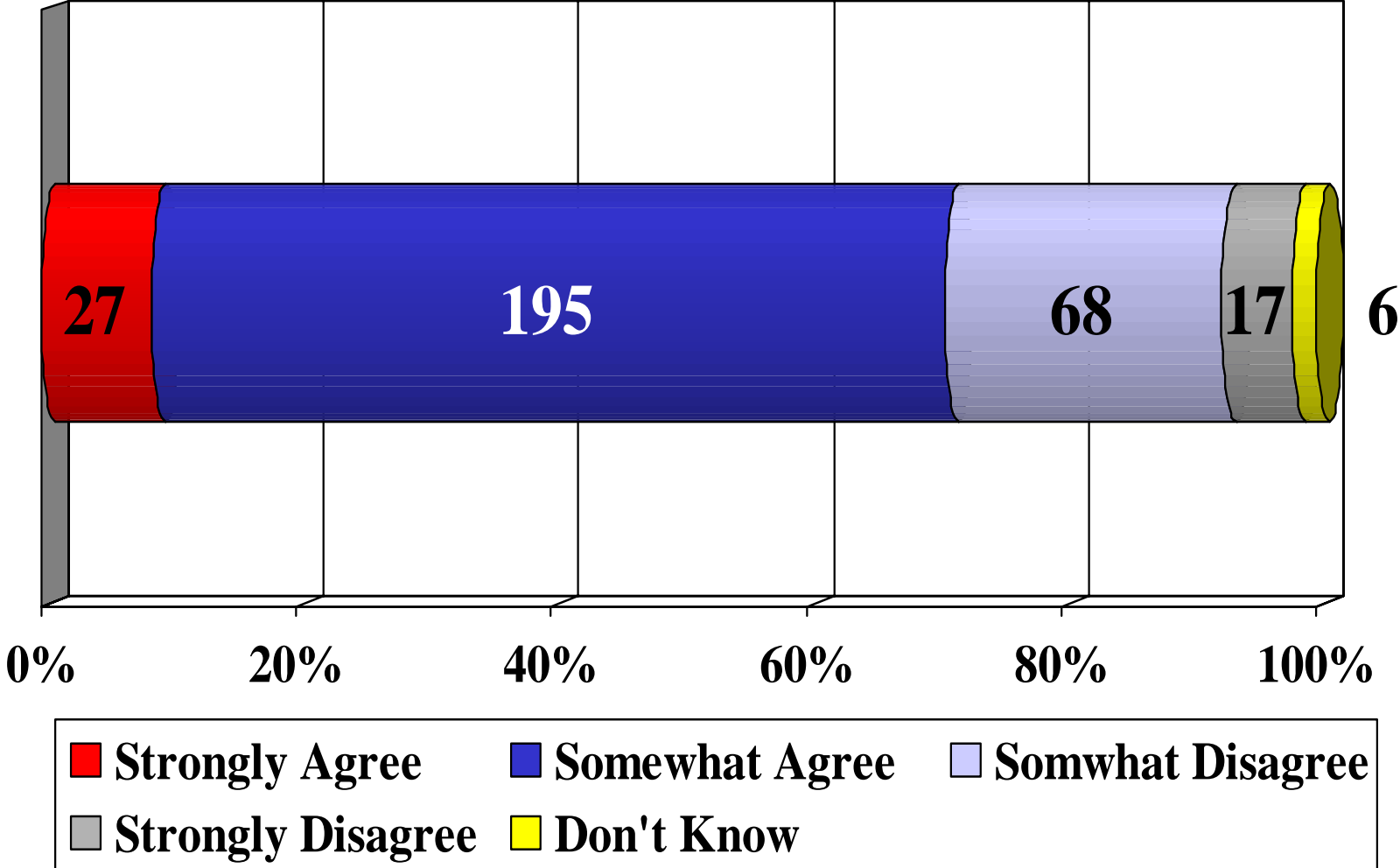
# 14. The public believes that the County Board responds effectively to budget problems.



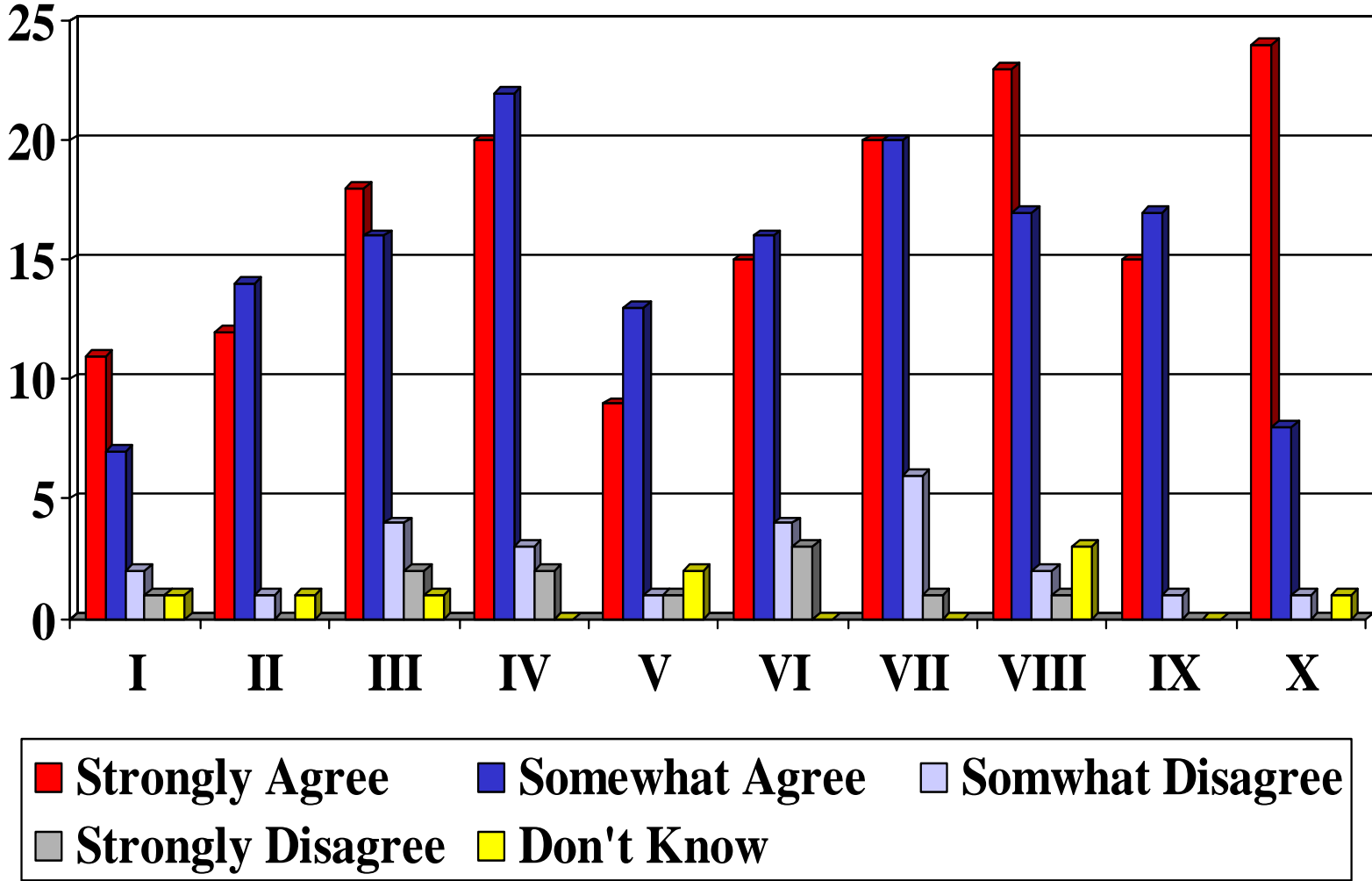
# 15. The public believes that the County Board understands the most critical needs of the residents of this area.



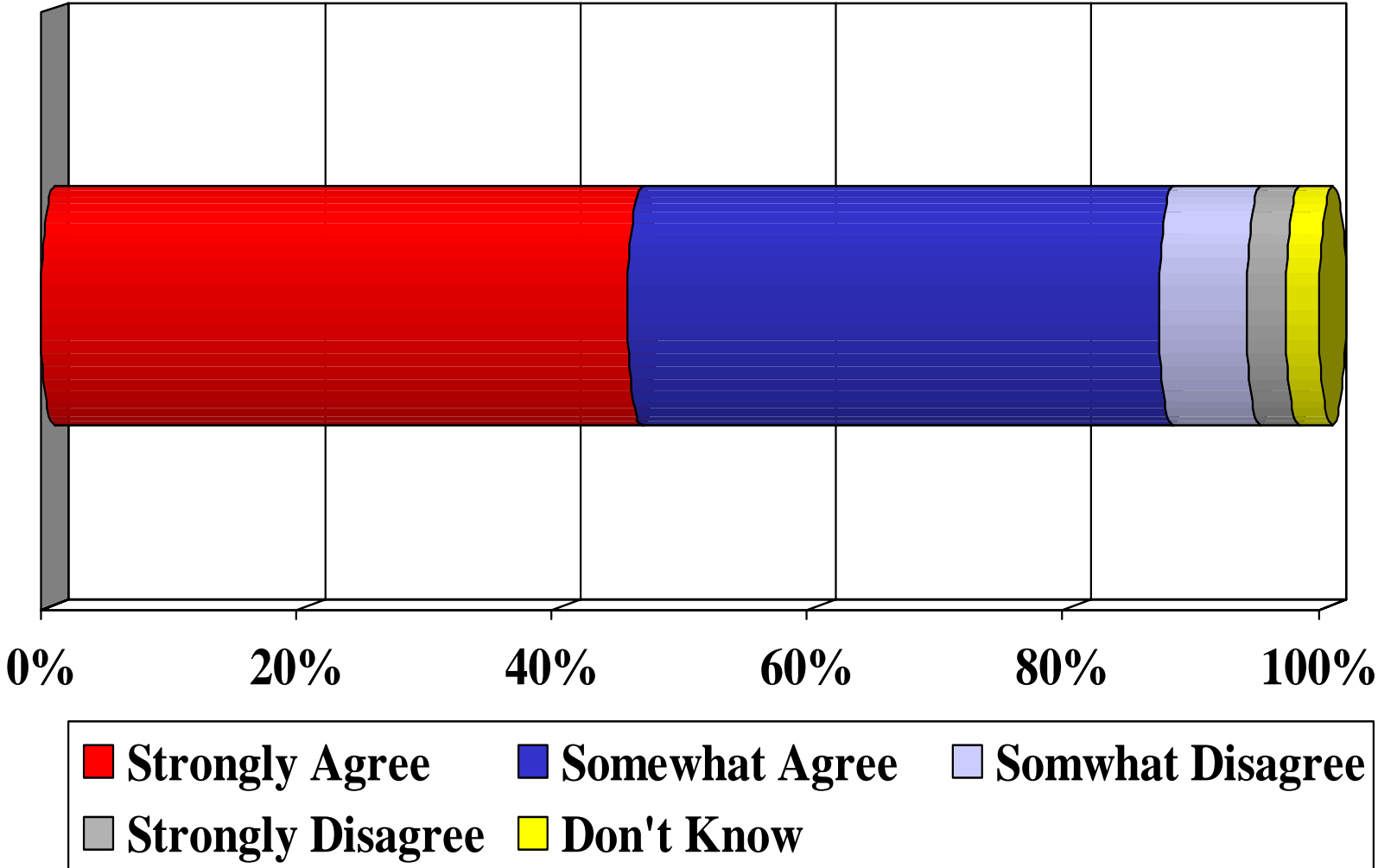
**15. The public believes that the County Board understands the most critical needs of the residents of this area.**



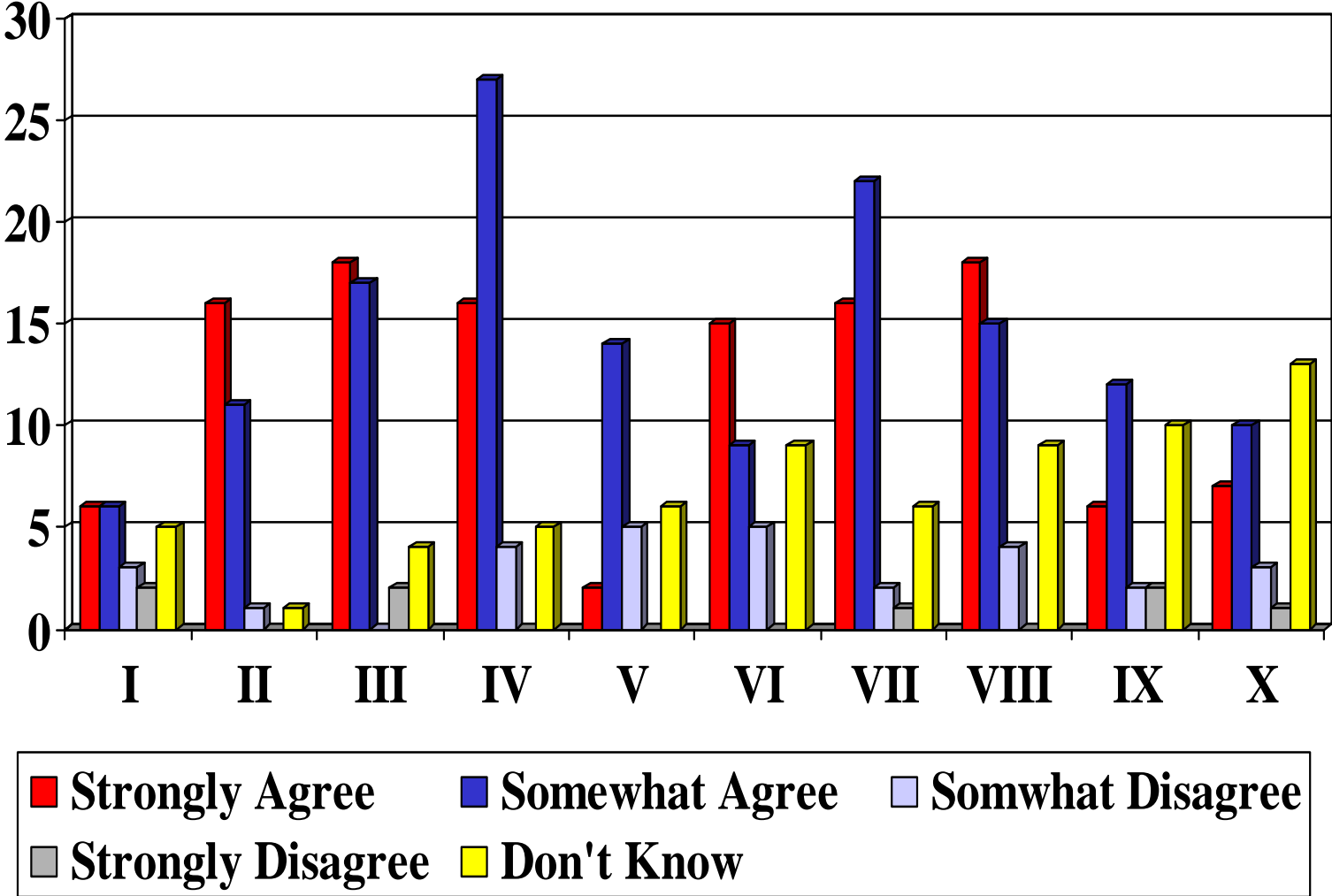
# 16. The public finds it hard to keep track of how the County Board spends its budget.



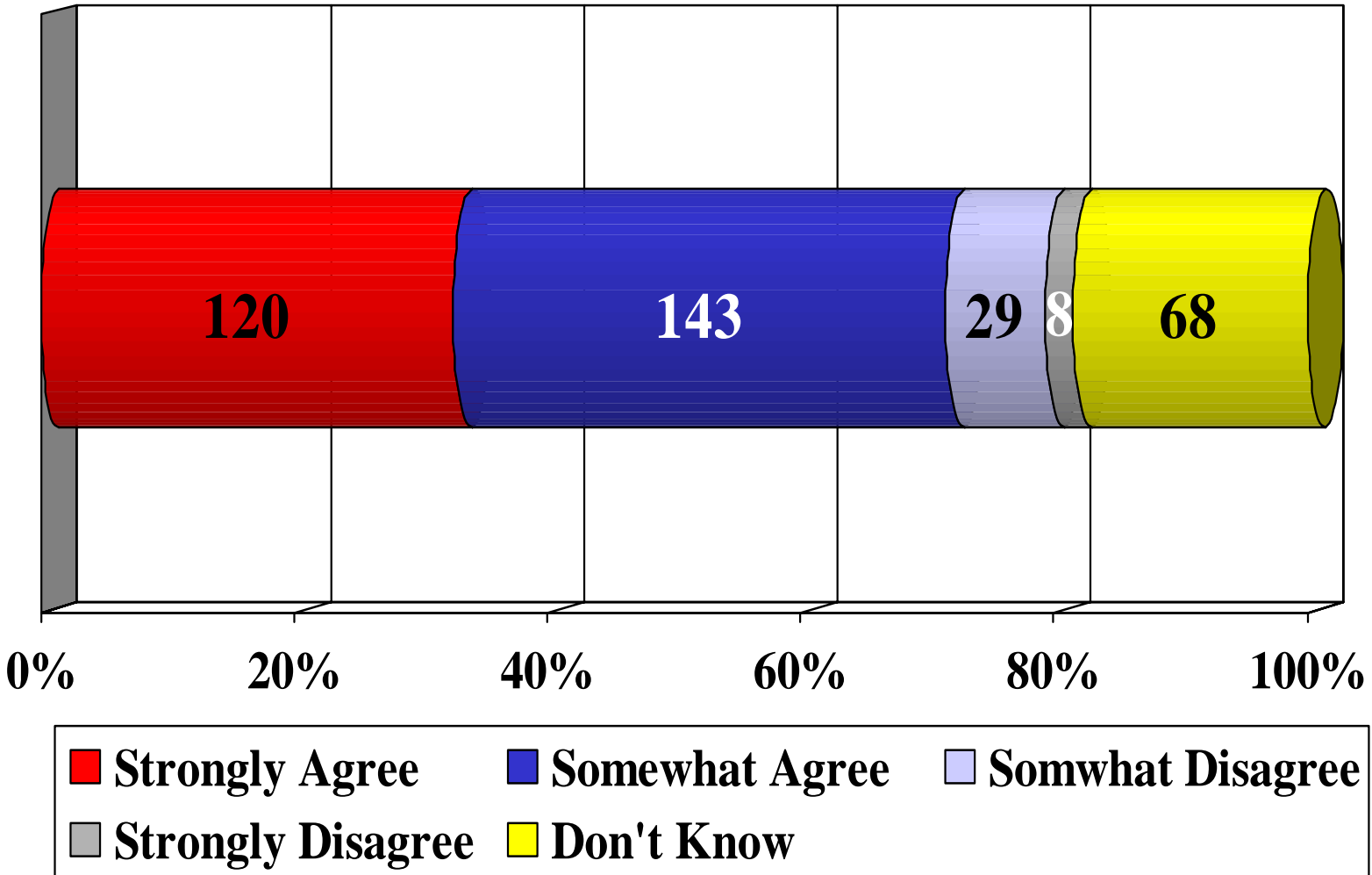
# 16. The public finds it hard to keep track of how the County Board spends its budget.



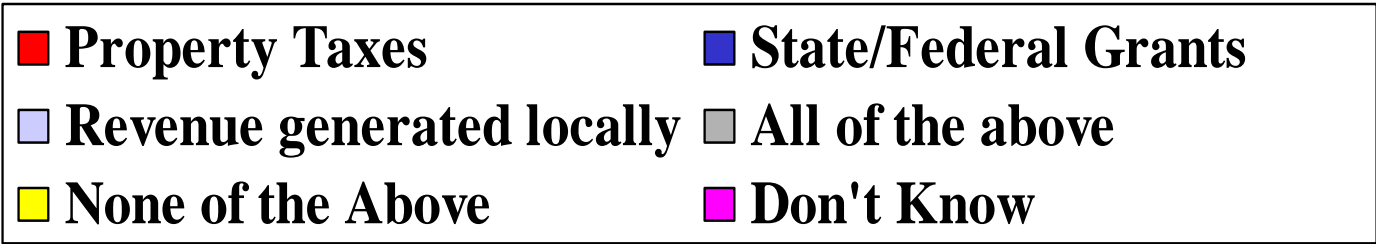
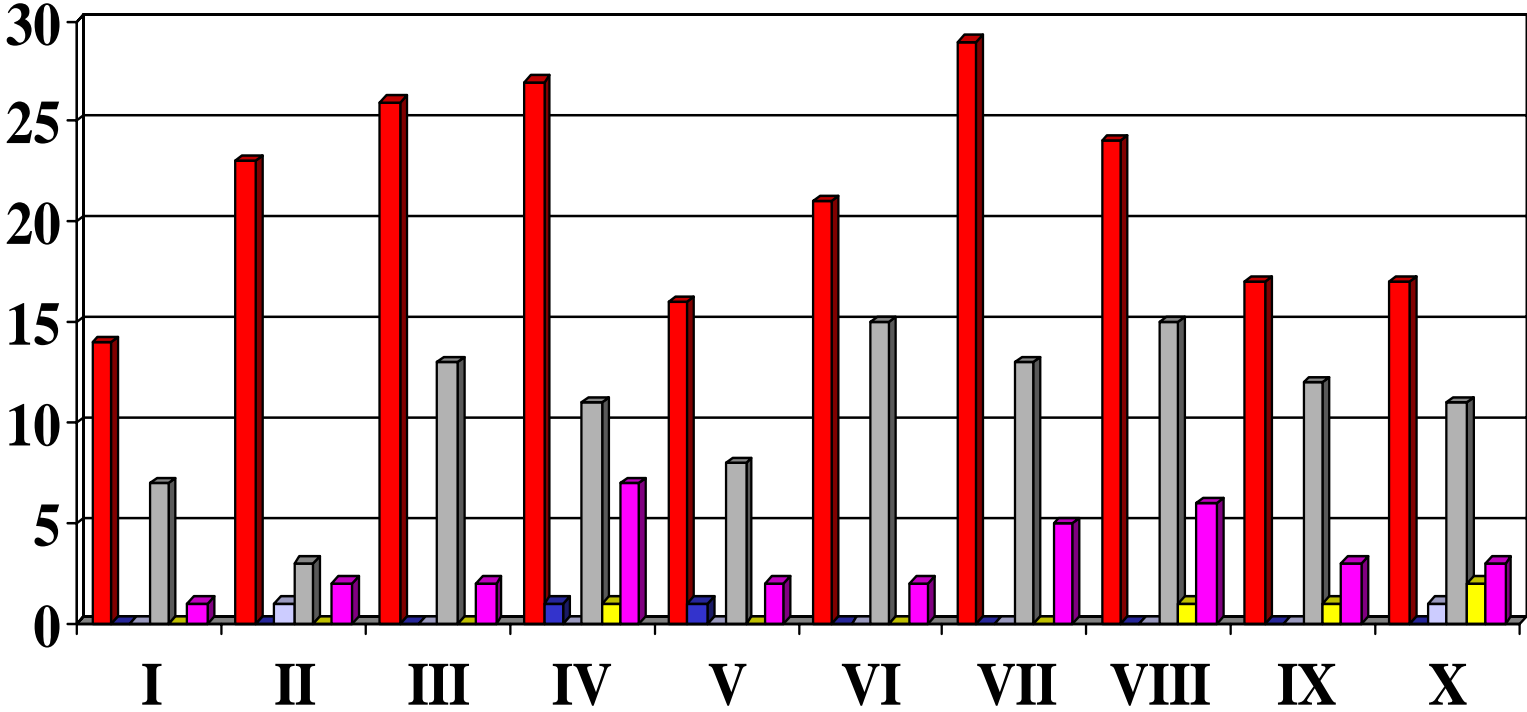
# 17. The public believes that the State imposes too many mandates on County government.



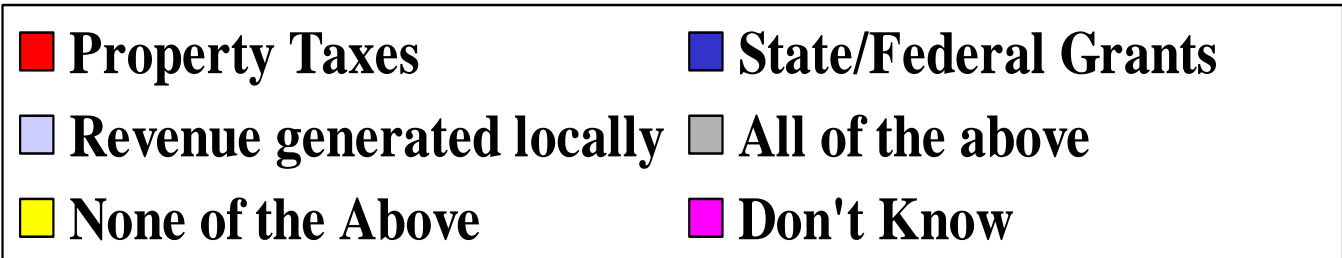
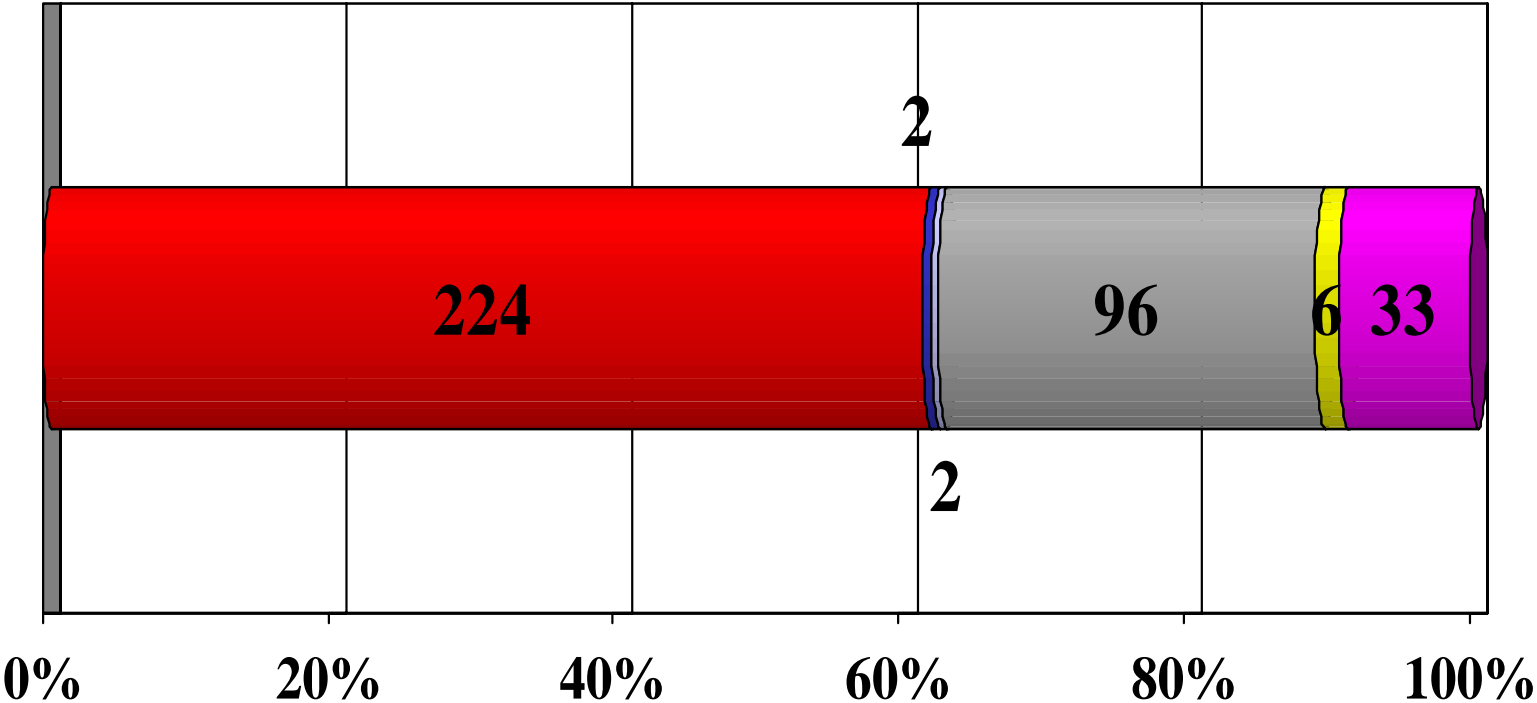
# 17. The public believes that the State imposes too many mandates on County government.



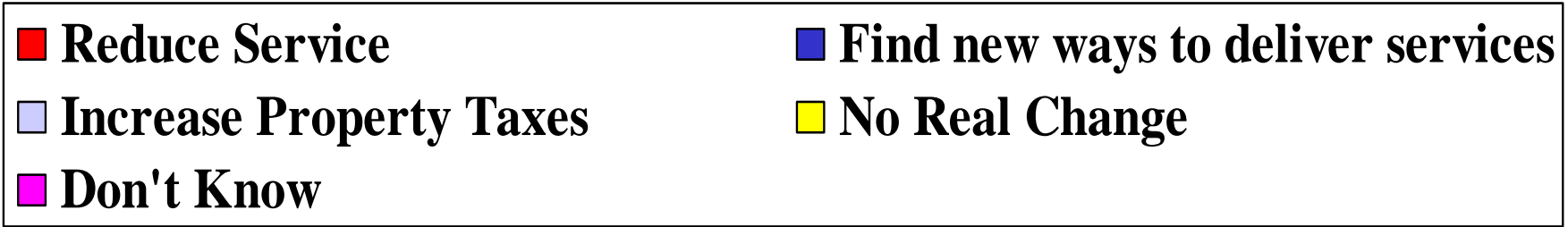
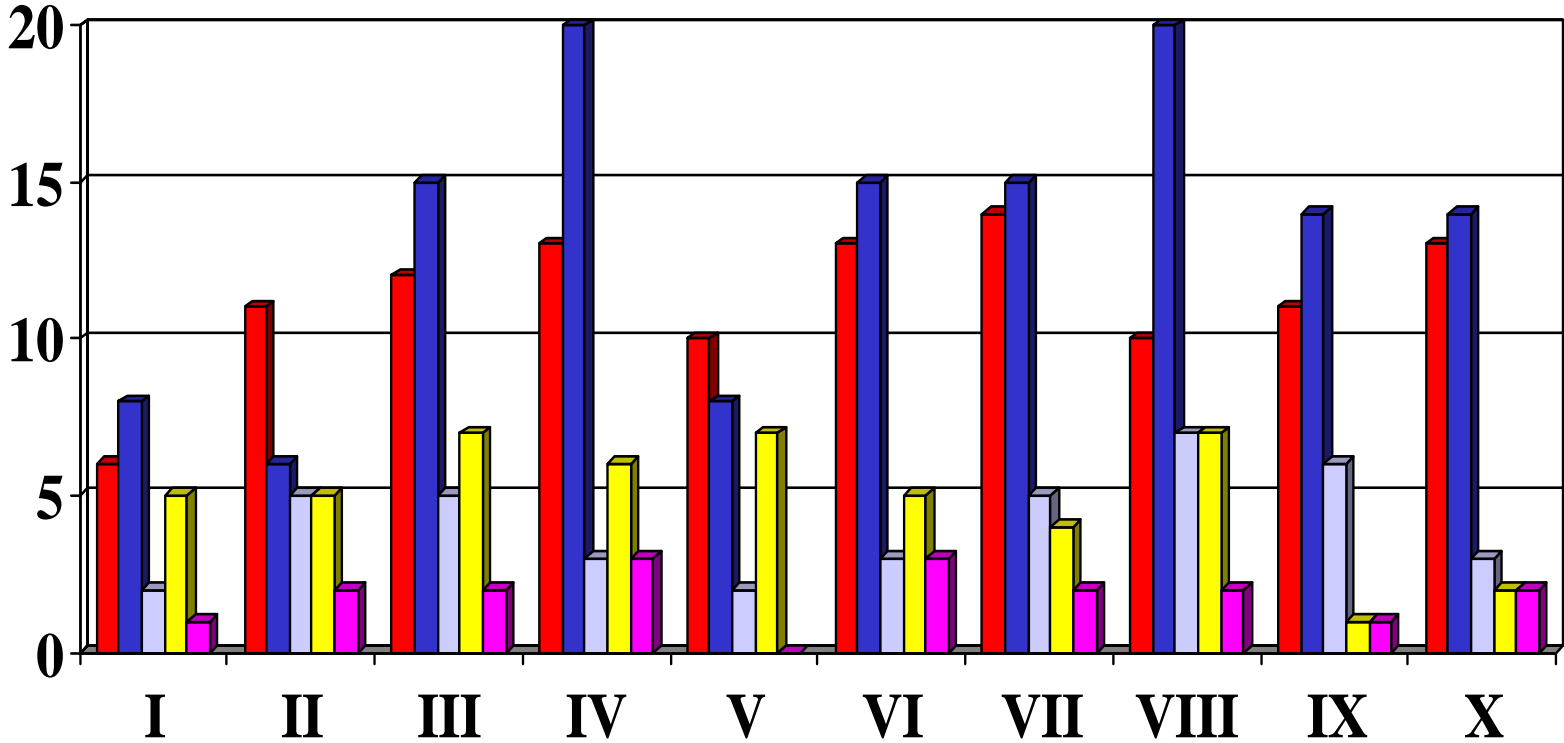
# 18. How does the public think County government is funded?



# 18. How does the public think County government is funded?



# 19. How does the public expect the county to respond to state aid cuts?



# 19. How does the public expect the county to respond to state aid cuts?

