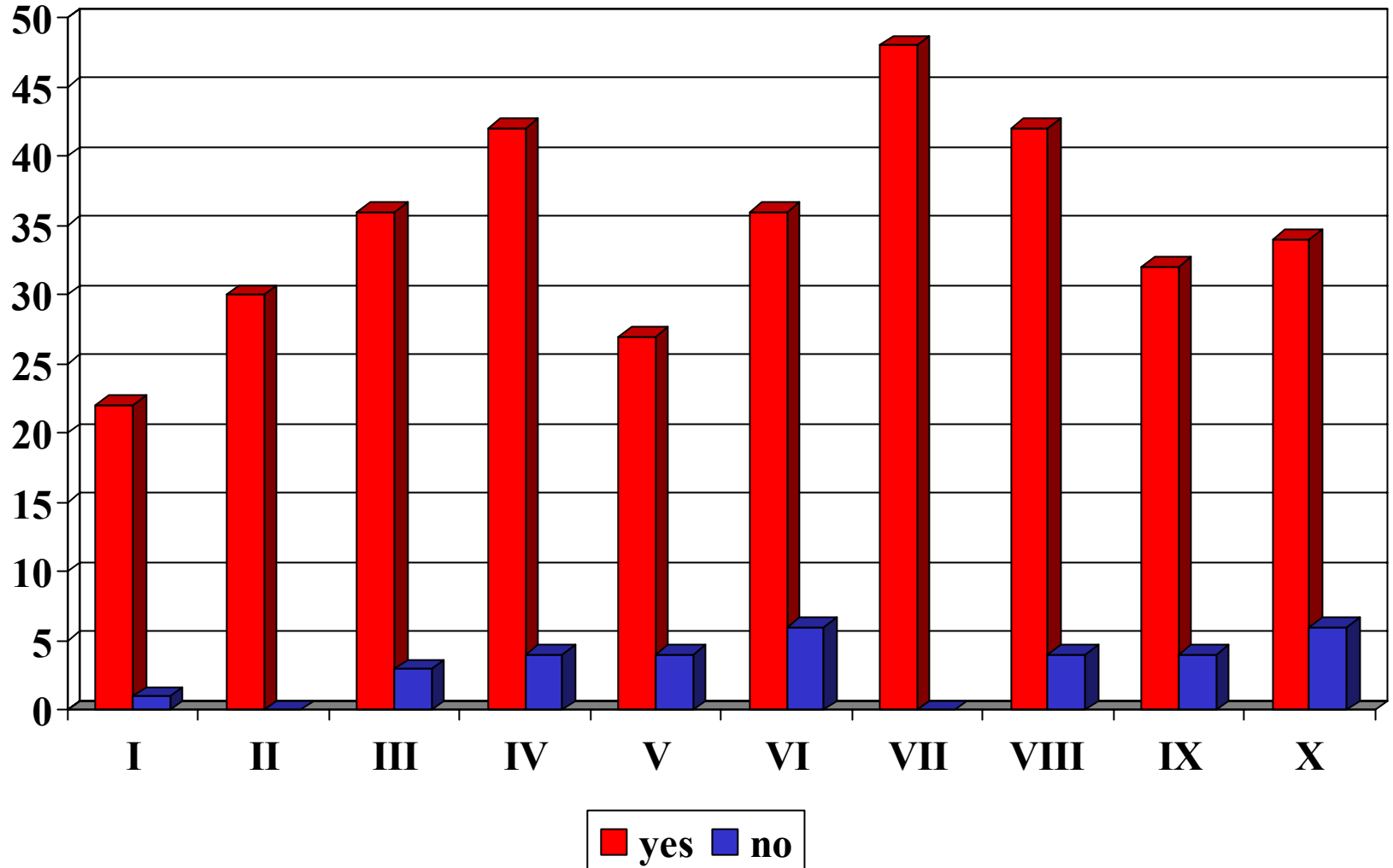


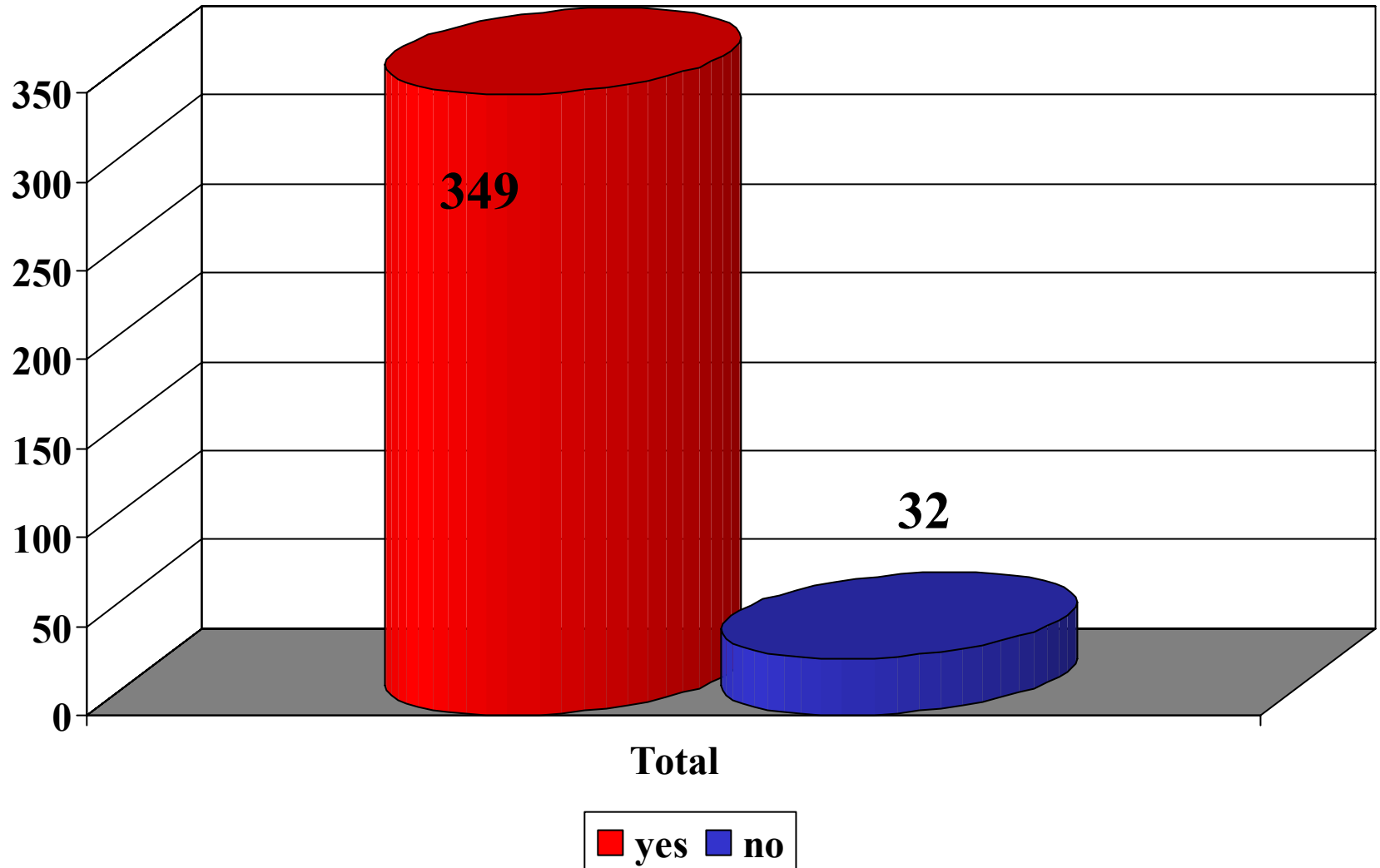
# **AMC District Meetings Commissioners**

Attendees responses to survey  
questions

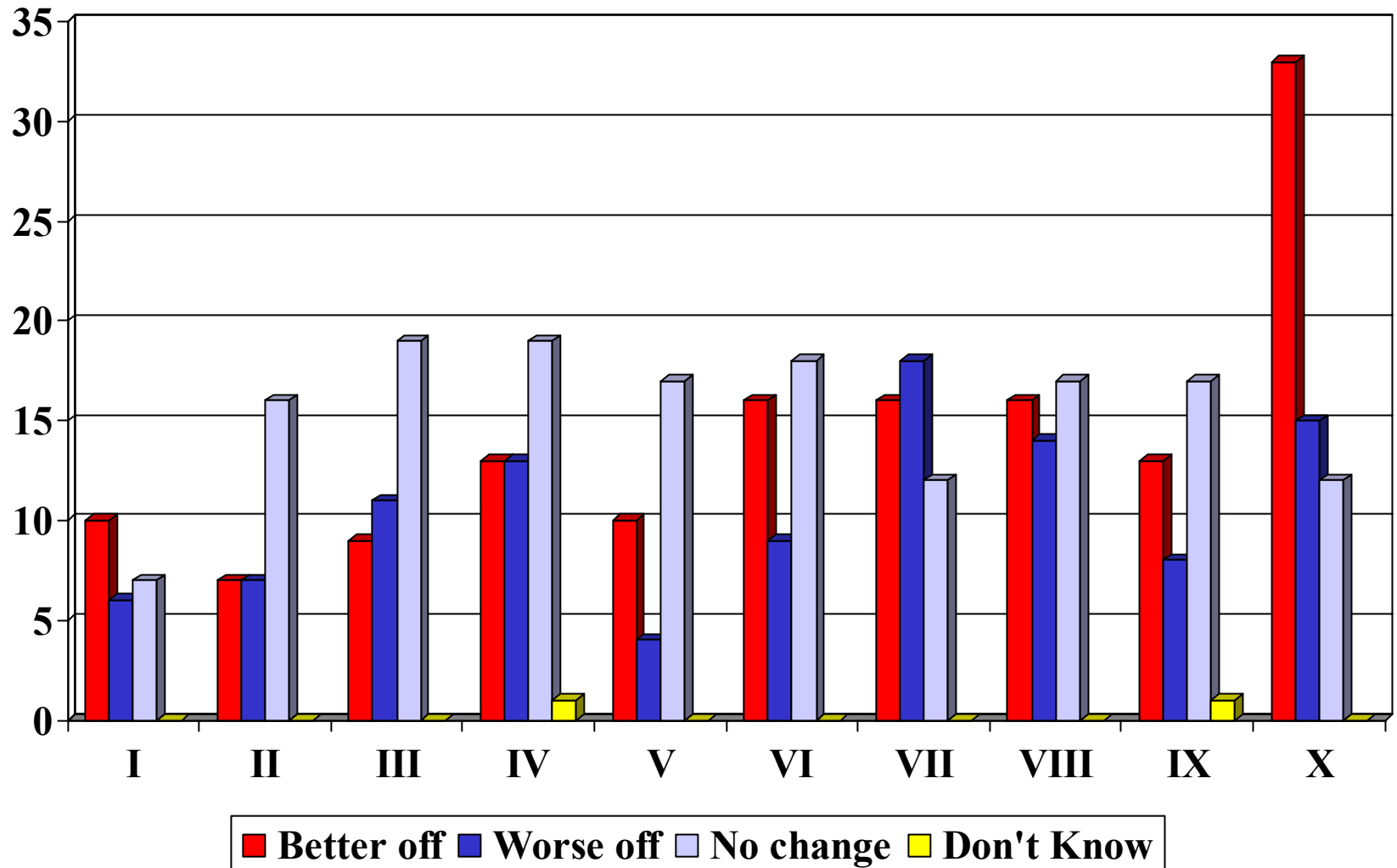
# 1. Are you a county official?



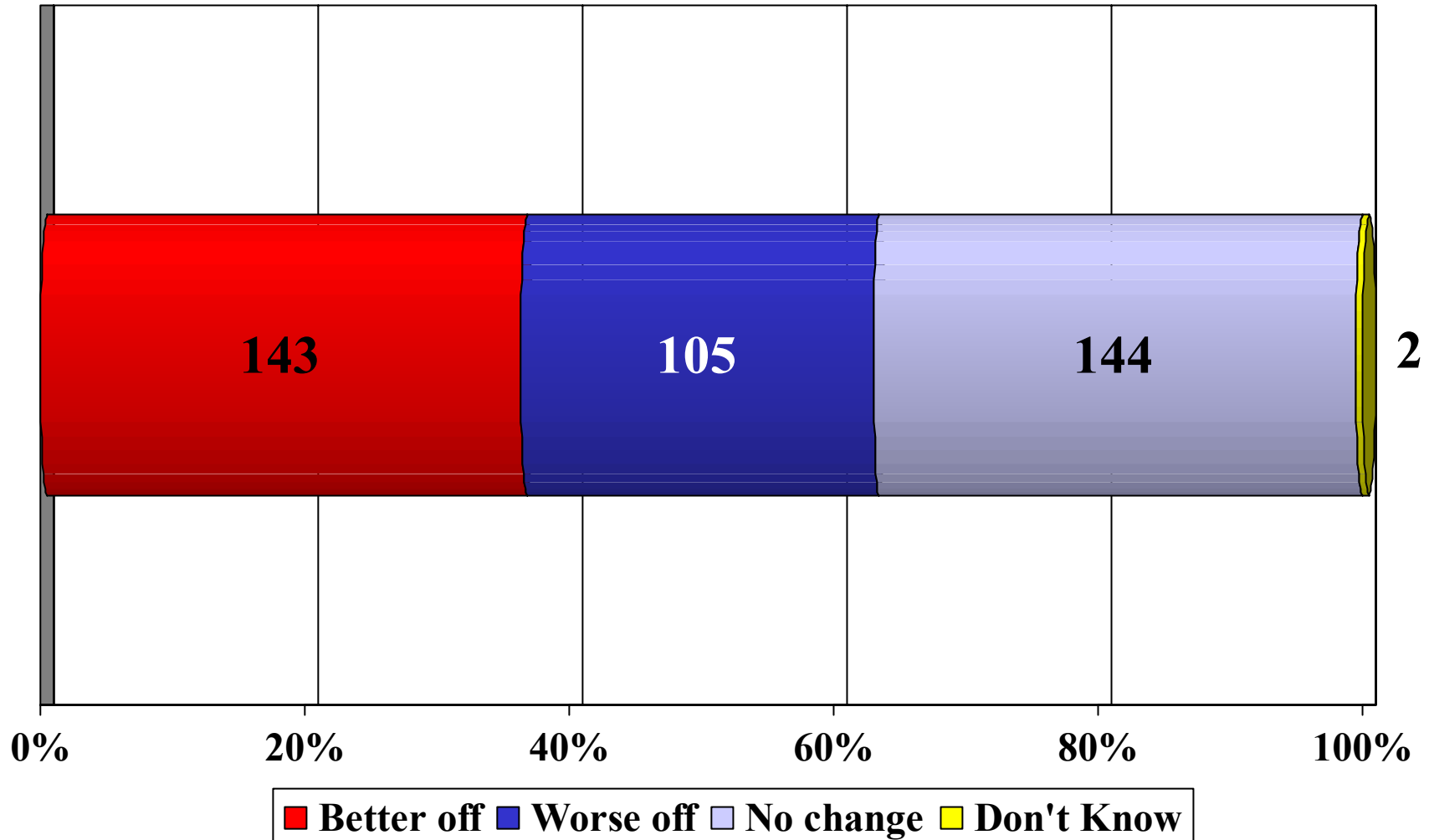
# 1. Are you a county official?



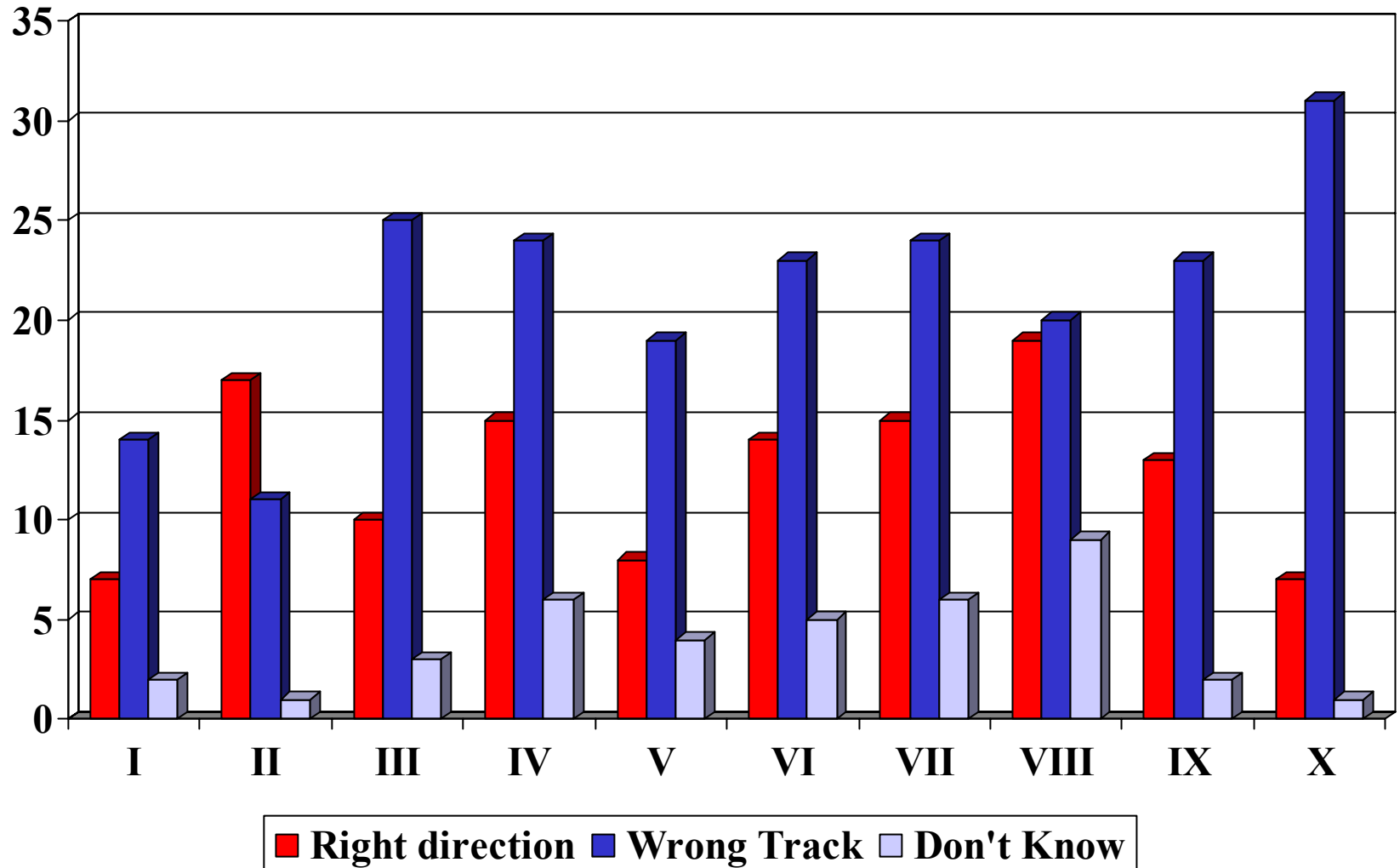
### 3. Would you say your household is better off or worse off financially than one year ago?



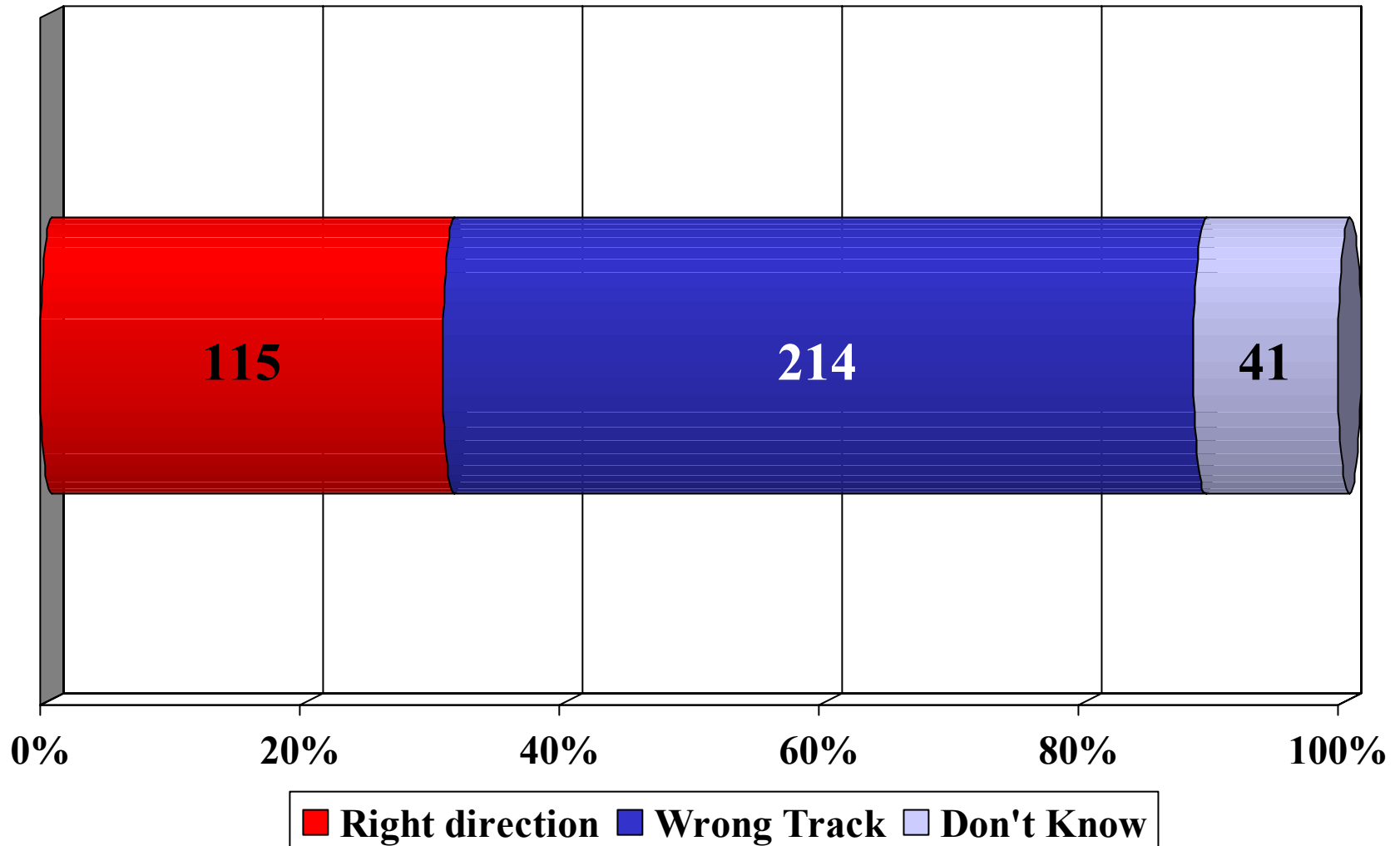
### 3. Would you say your household is better off or worse off financially than one year ago?



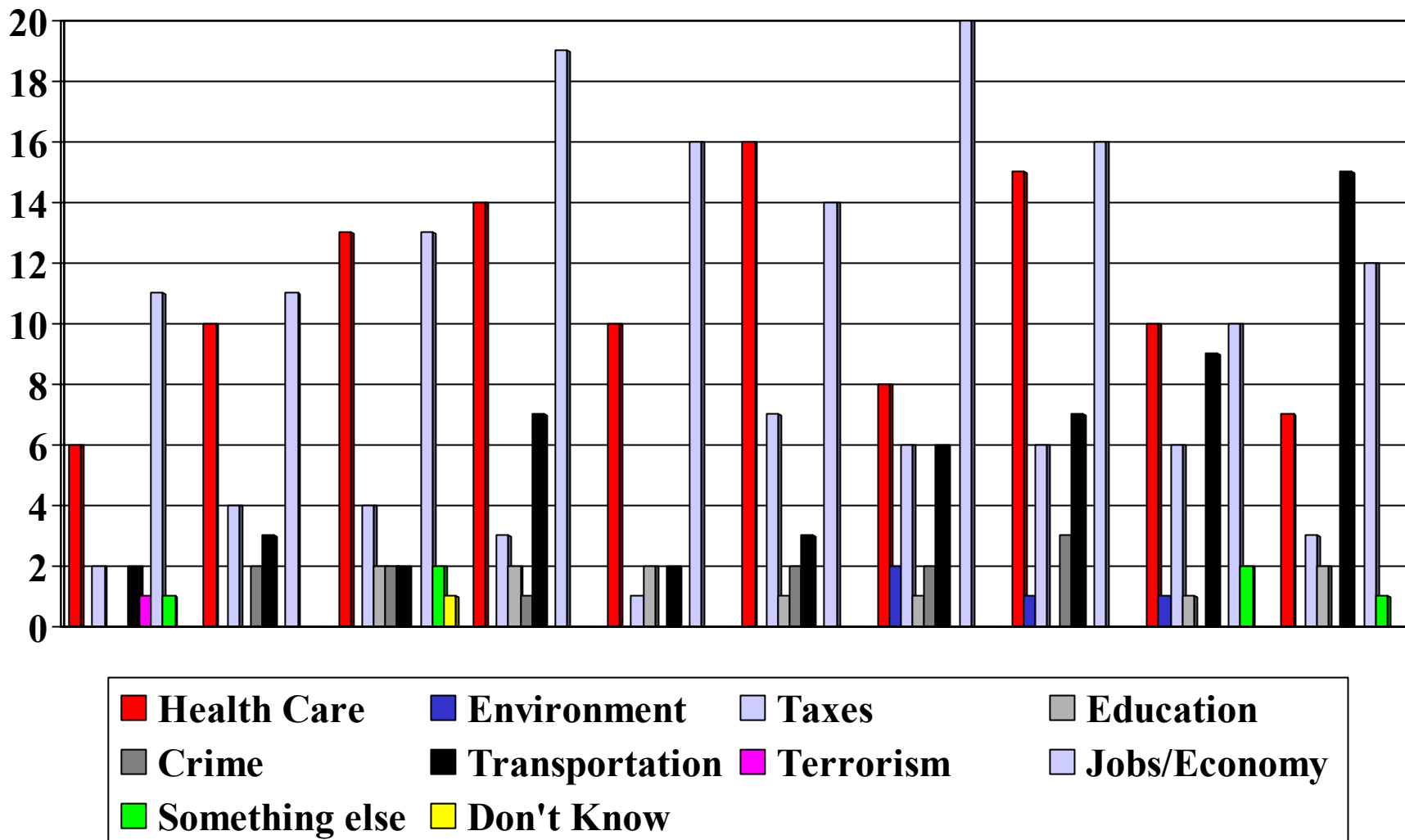
# 4. In your view, do you think Minnesota is heading in the right direction or is it off on the wrong track?



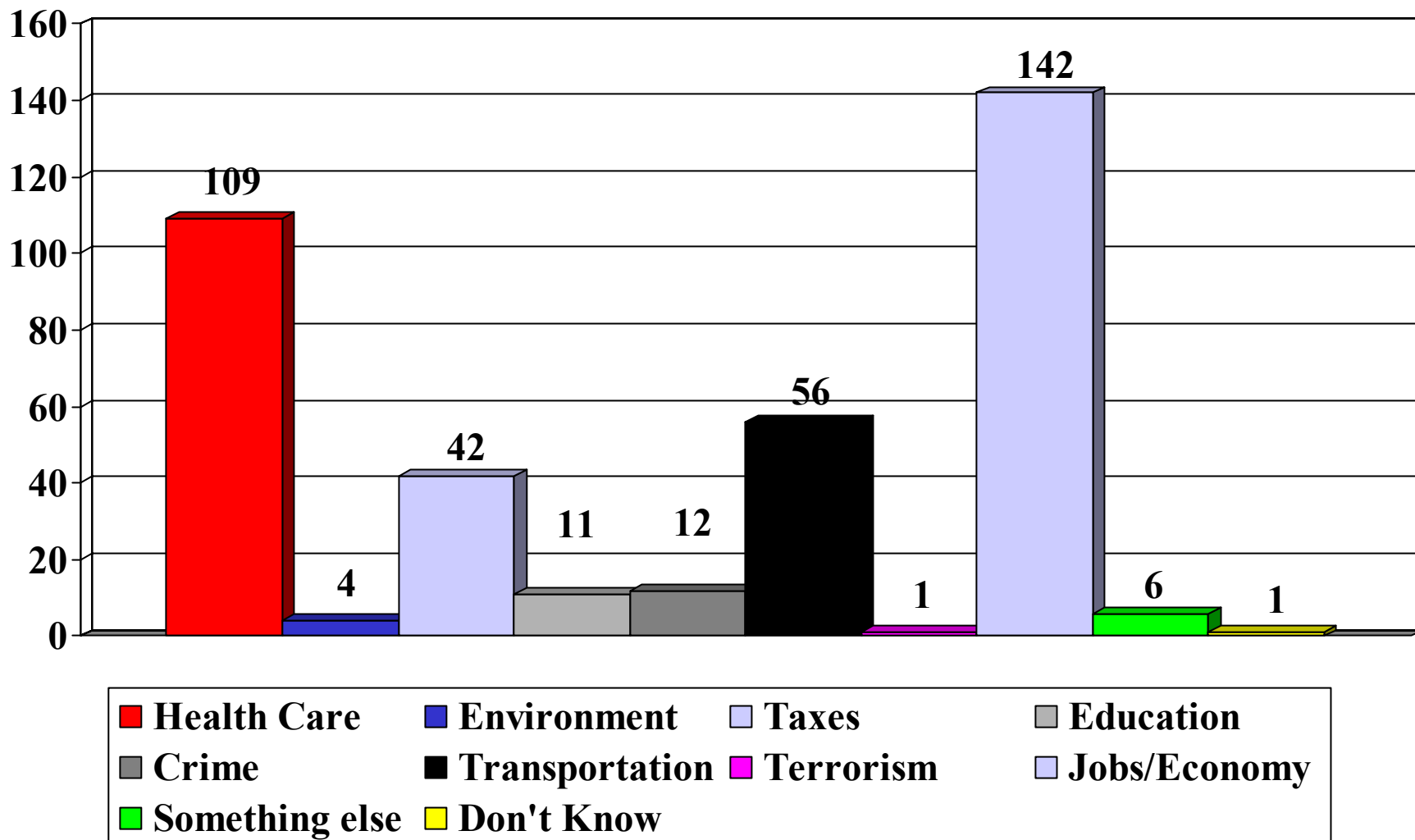
# 4. In your view, do you think Minnesota is heading in the right direction or is it off on the wrong track?



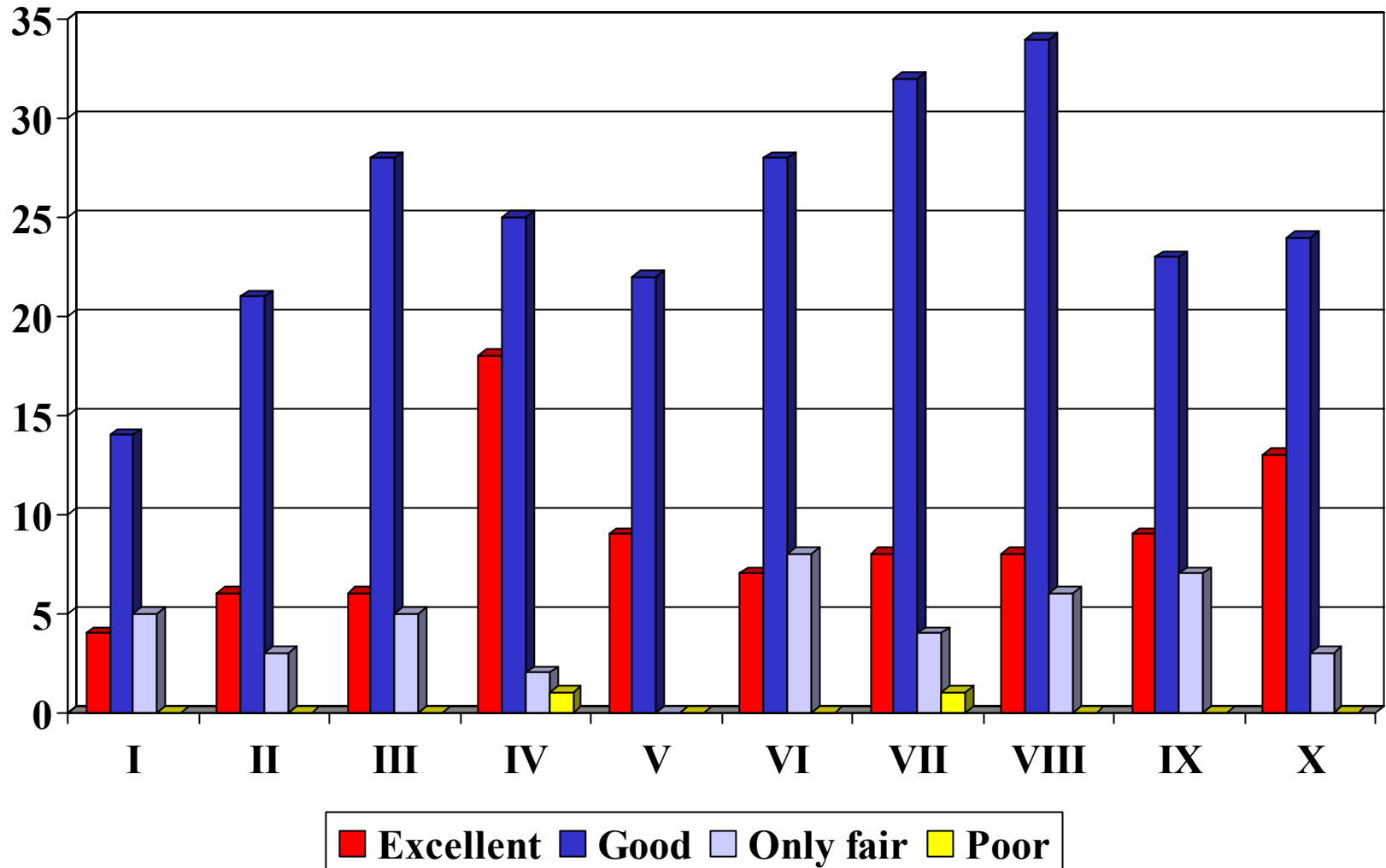
# 5. What do you feel is the most serious issue facing the state today?



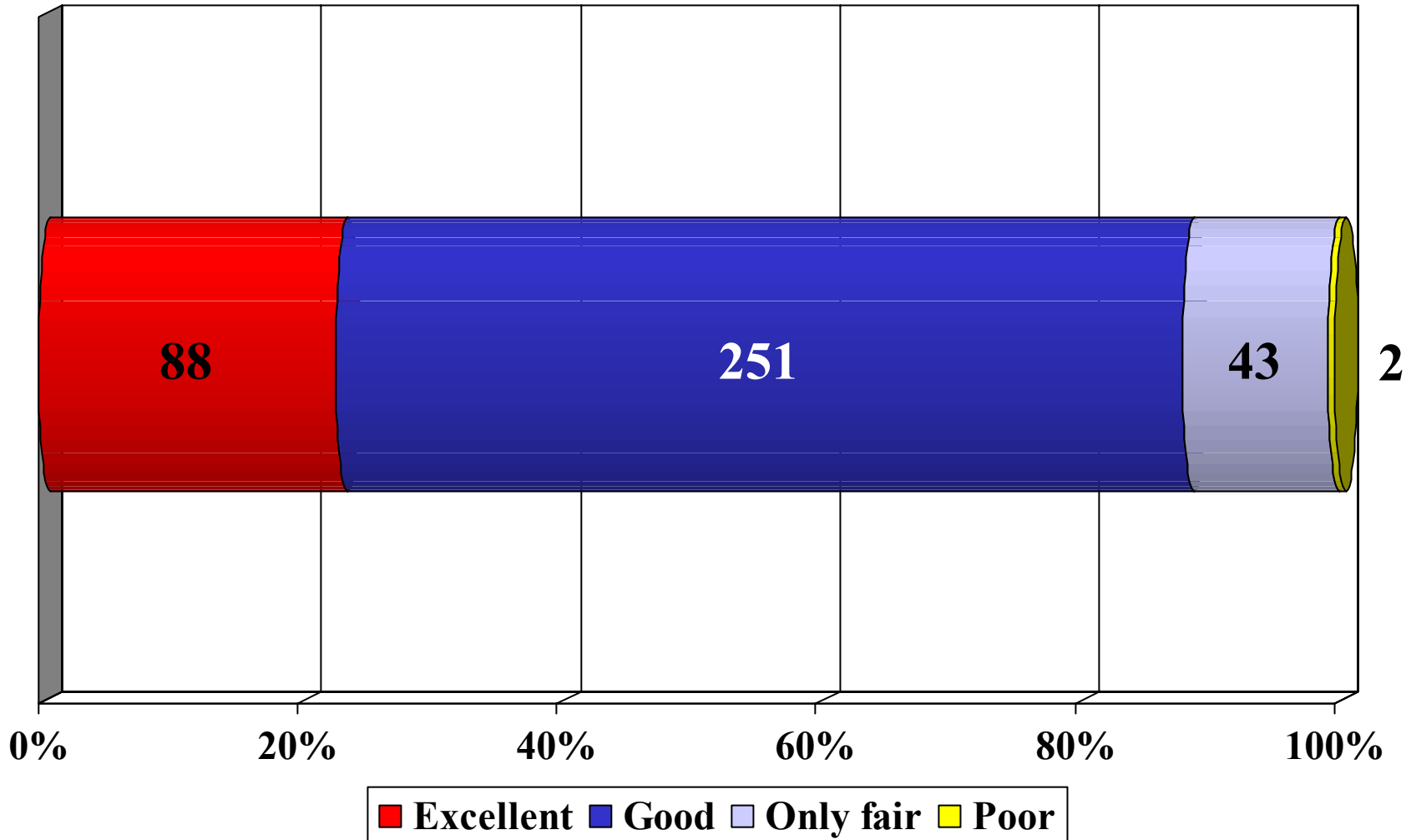
# 5. What do you feel is the most serious issue facing the state today?



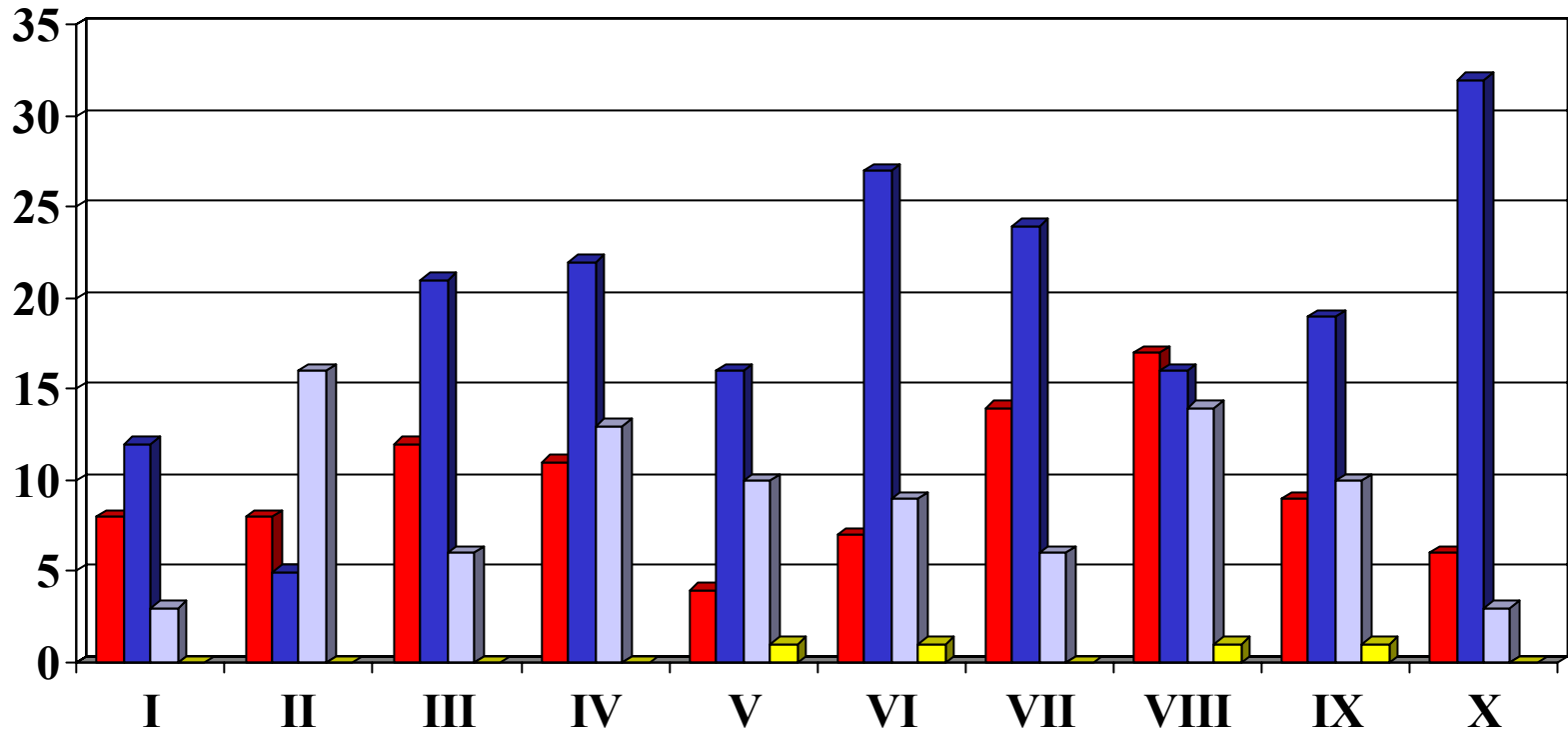
## 6. Describe the quality of life in your community? Is it....



## 6. Describe the quality of life in your community? Is it....

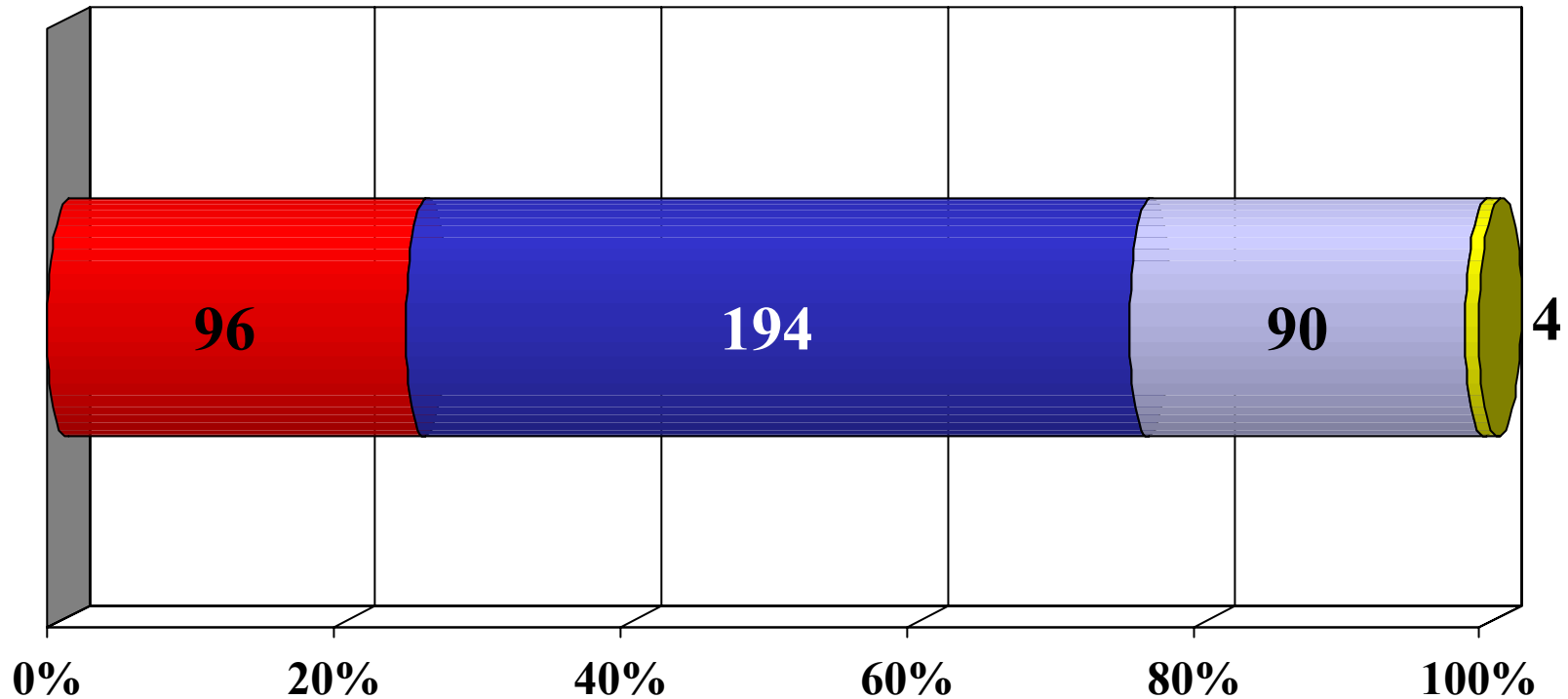


# 7. Which of the following statement best describes your feelings about taxes in Minnesota?



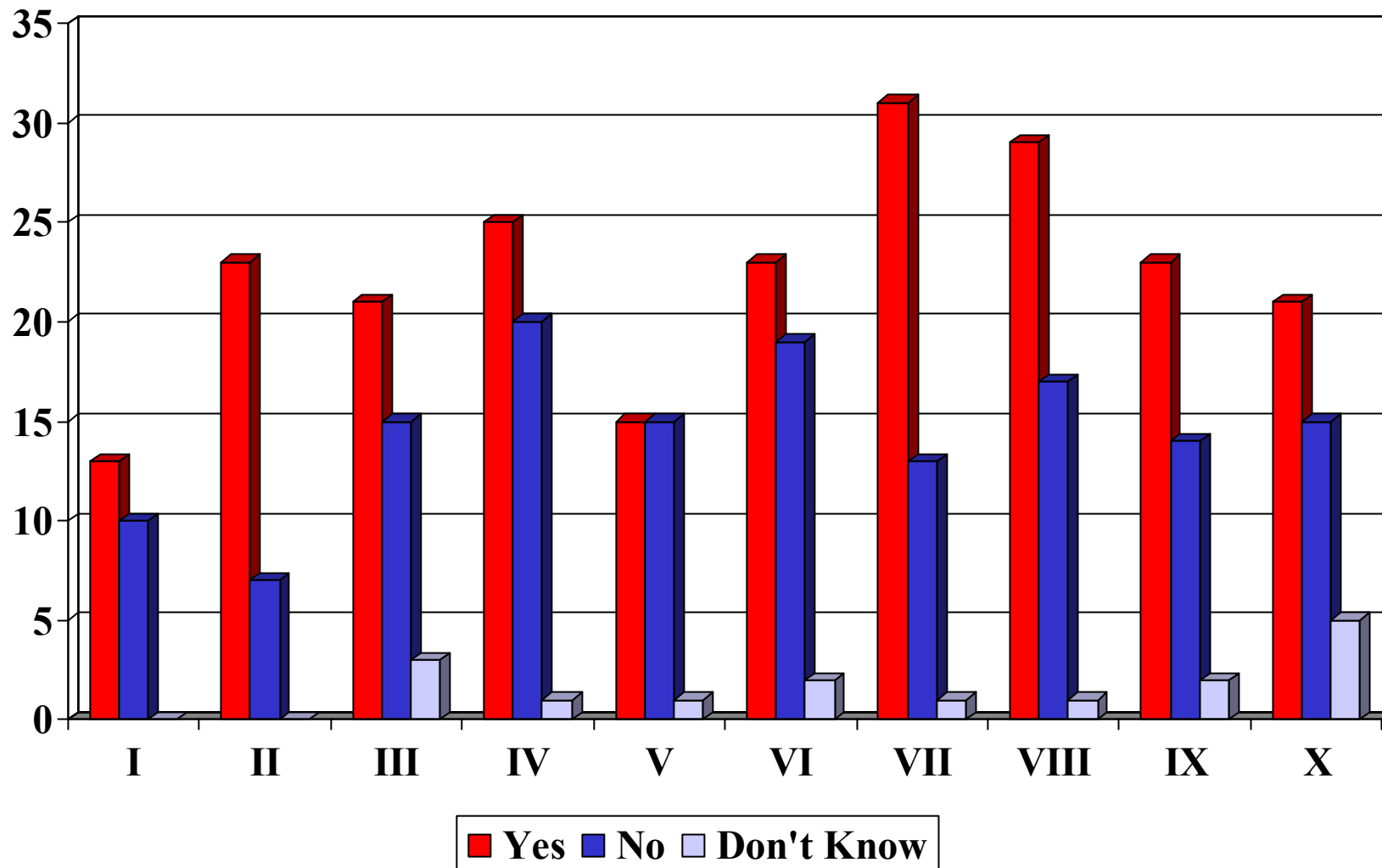
- Minnesota's Tax burden is too high
- I would pay more in taxes to improve some government services
- Minnesota's tax burden is about right
- No opinion

# 7. Which of the following statement best describes your feelings about taxes in Minnesota?

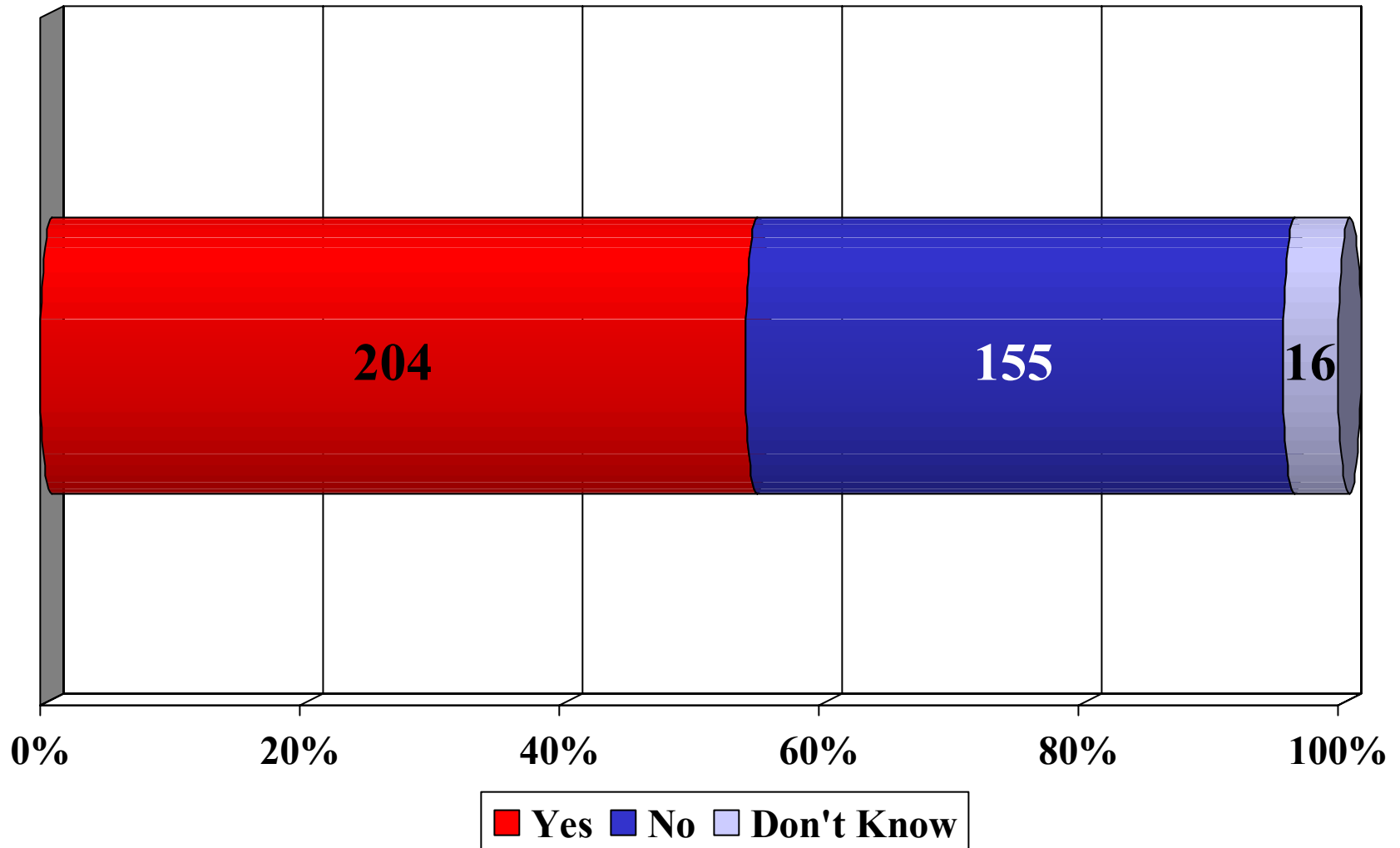


- Minnesota's Tax burden is too high
- I would pay more in taxes to improve some government services
- Minnesota's tax burden is about right
- No opinion

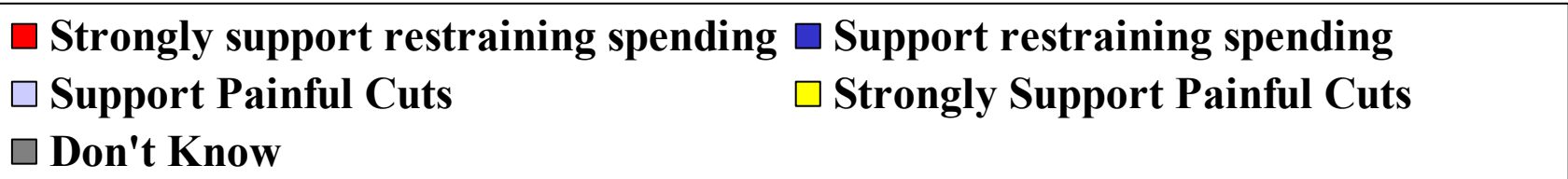
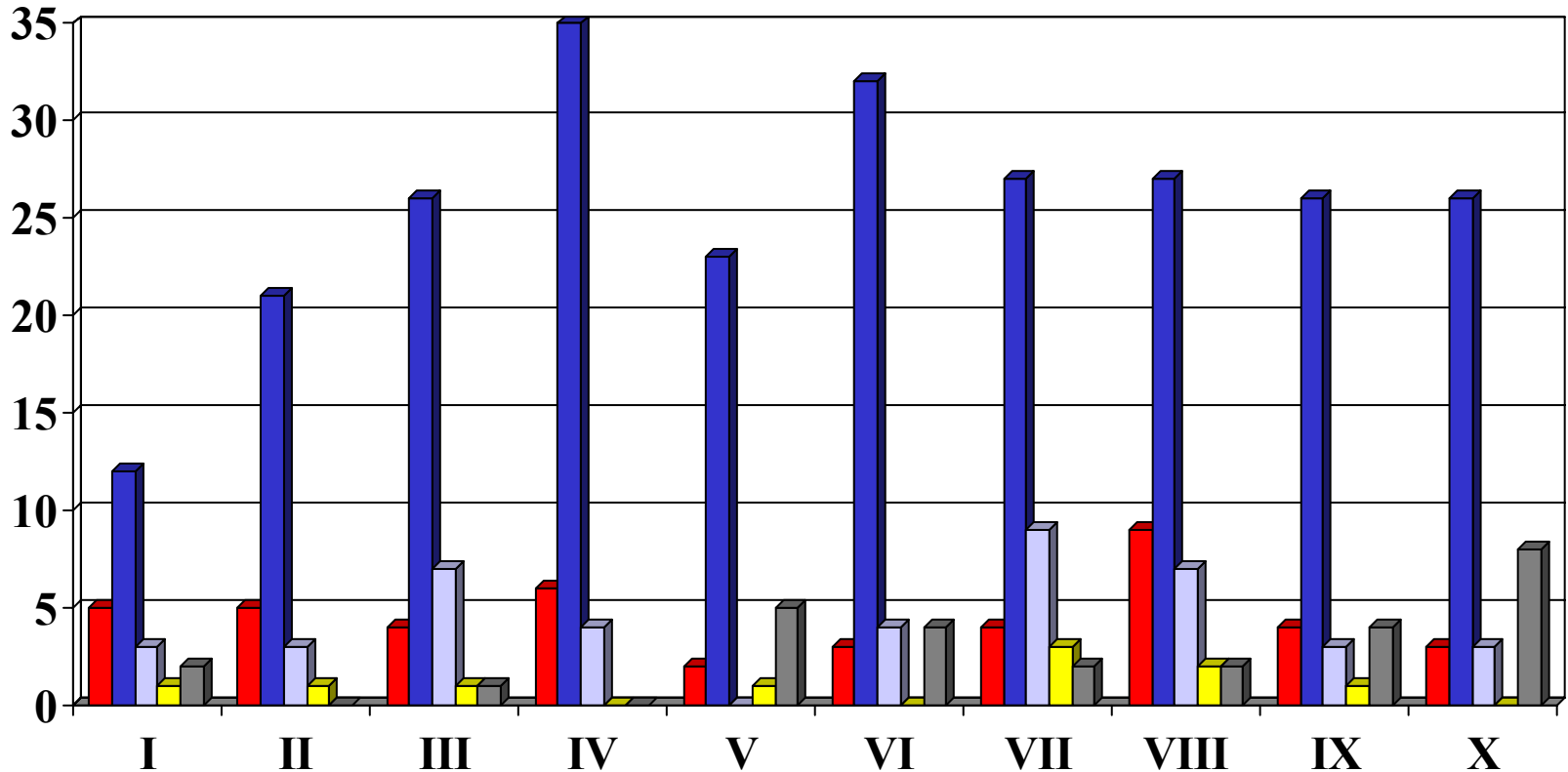
## 8. Has your overall tax burden increased during the past three years?



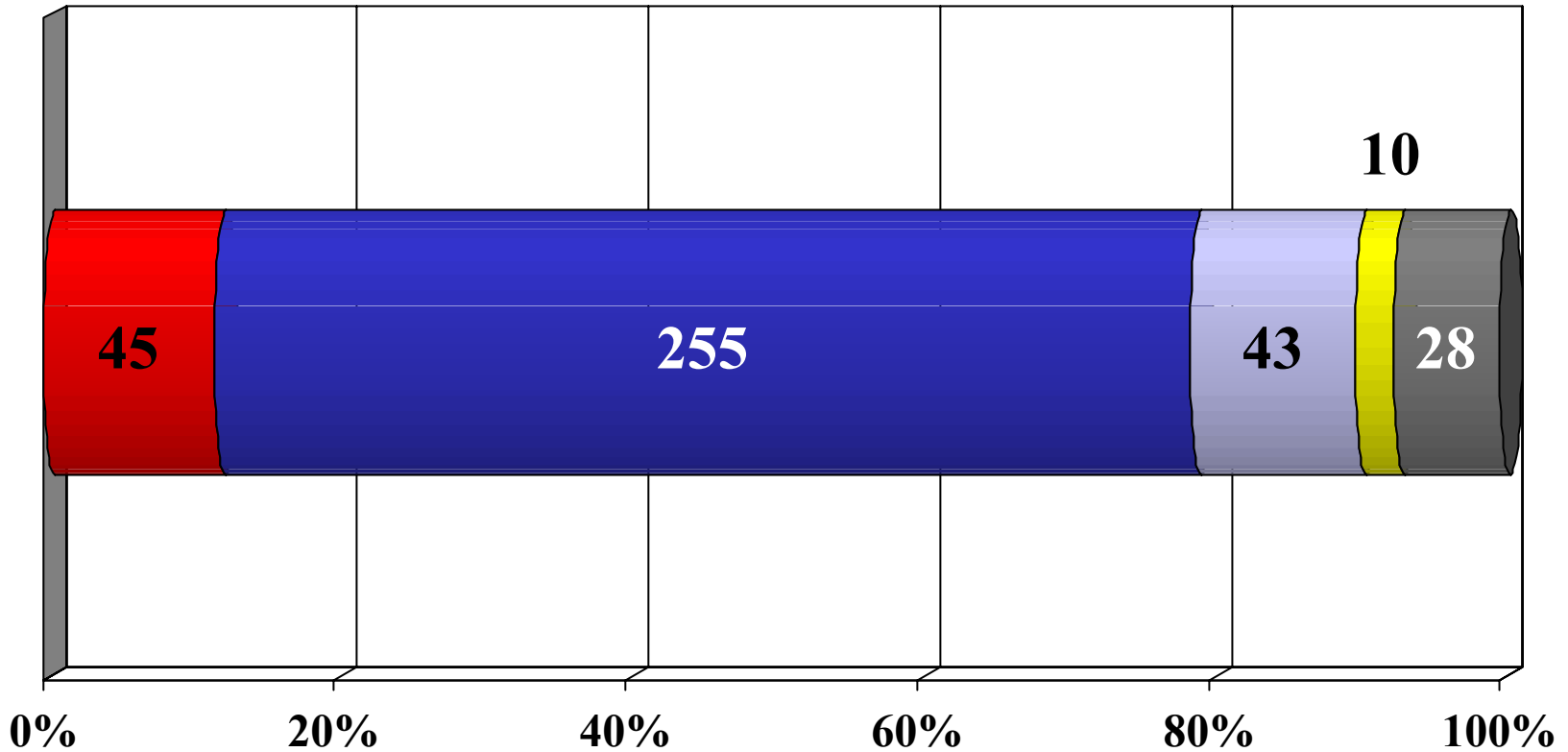
# 8. Has your overall tax burden increased during the past three years?



**9. Thinking about the budget problems that are facing state & local government in Minnesota, some people believe that government needs to restrain spending and find new ways to deliver services. Others fear that budget problems will result in painful cuts in services to Minnesotans. Which position is closest to your viewpoint?**

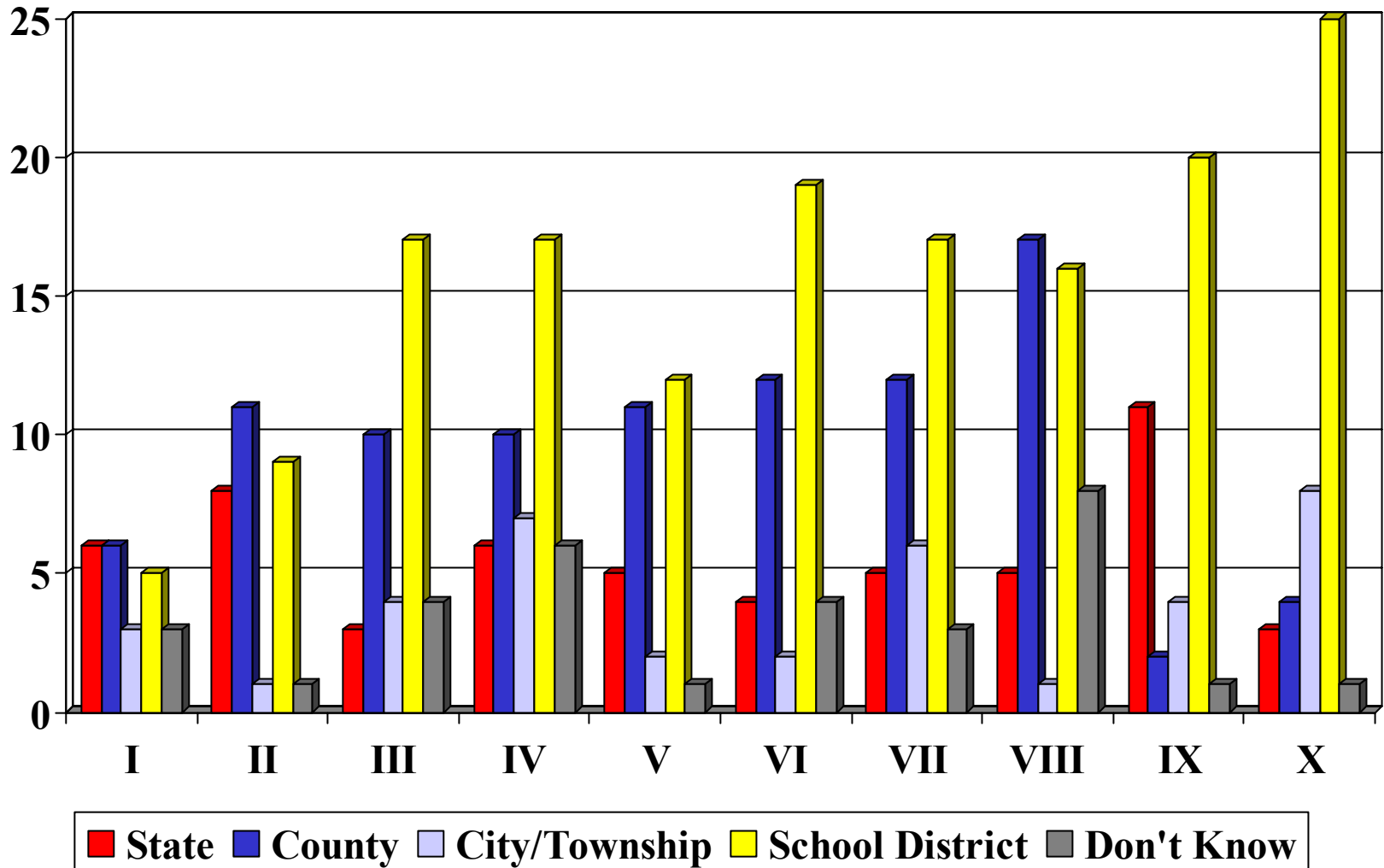


**9. Thinking about the budget problems that are facing state & local government in Minnesota, some people believe that government needs to restrain spending and find new ways to deliver services. Others fear that budget problems will result in painful cuts in services to Minnesotans. Which position is closest to your viewpoint?**

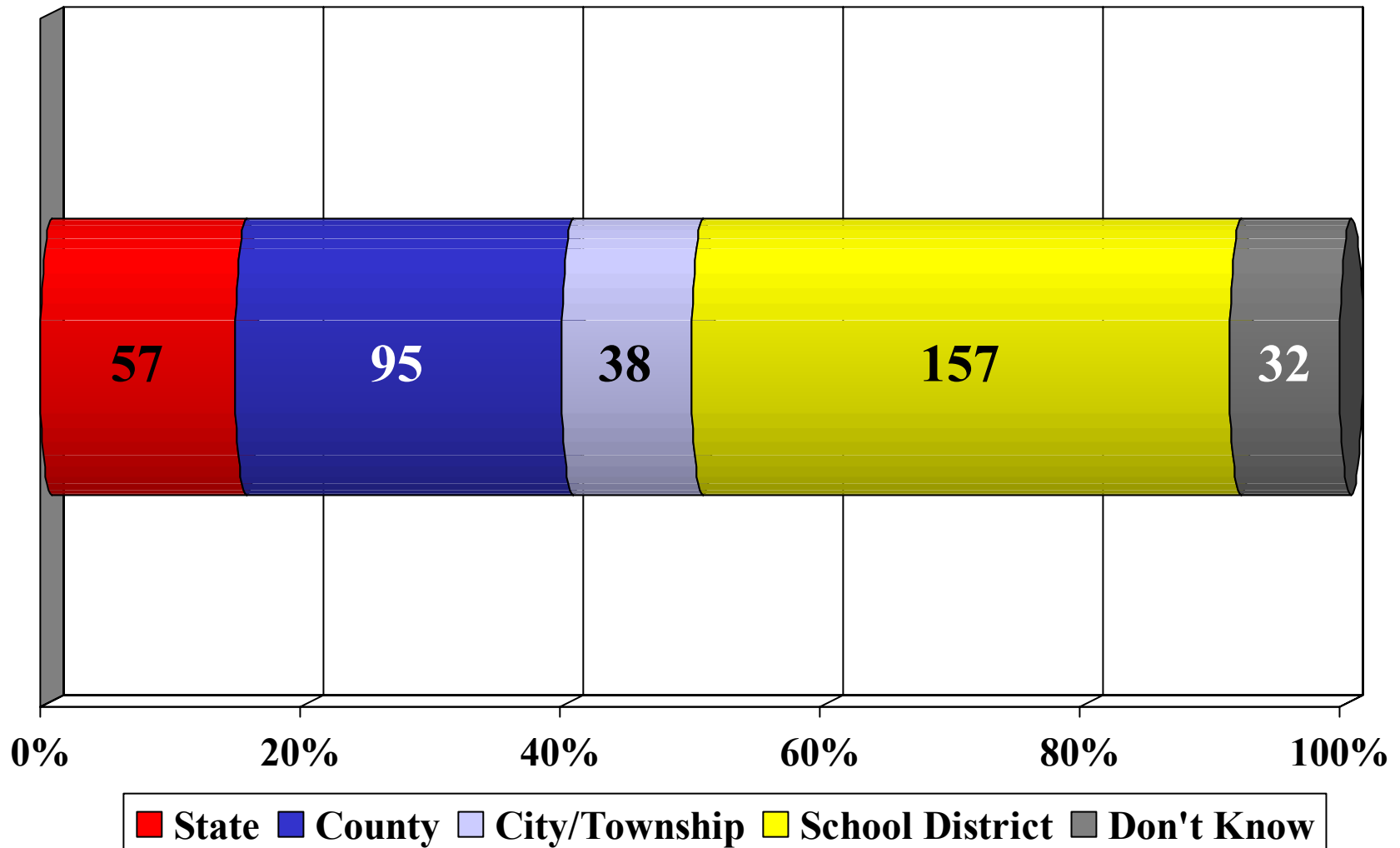


- Strongly support restraining spending**
- Support restraining spending**
- Support Painful Cuts**
- Strongly Support Painful Cuts**
- Don't Know**

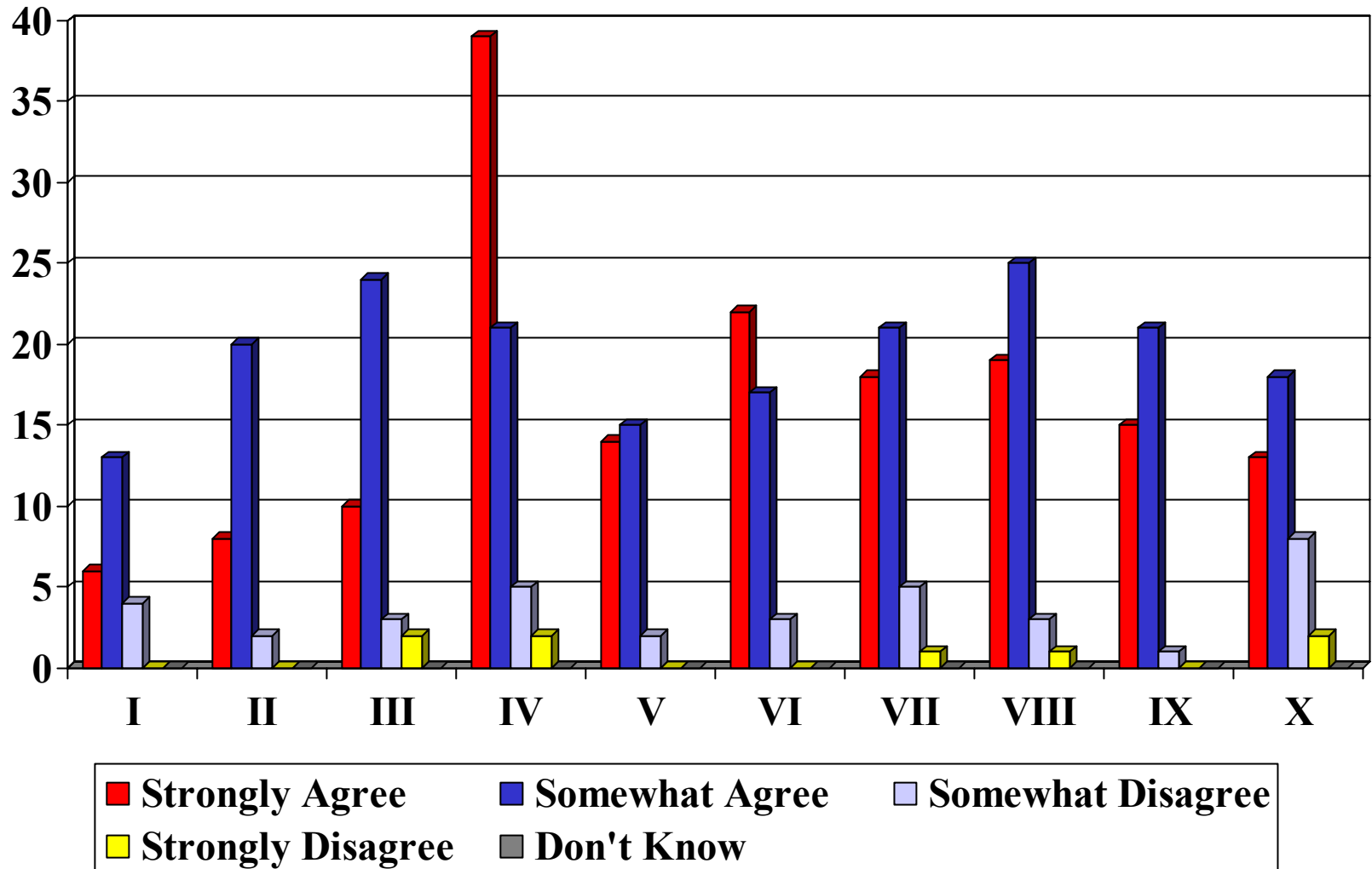
# 10. When thinking about your property tax statement... Which level of government accounts for the highest property taxes?



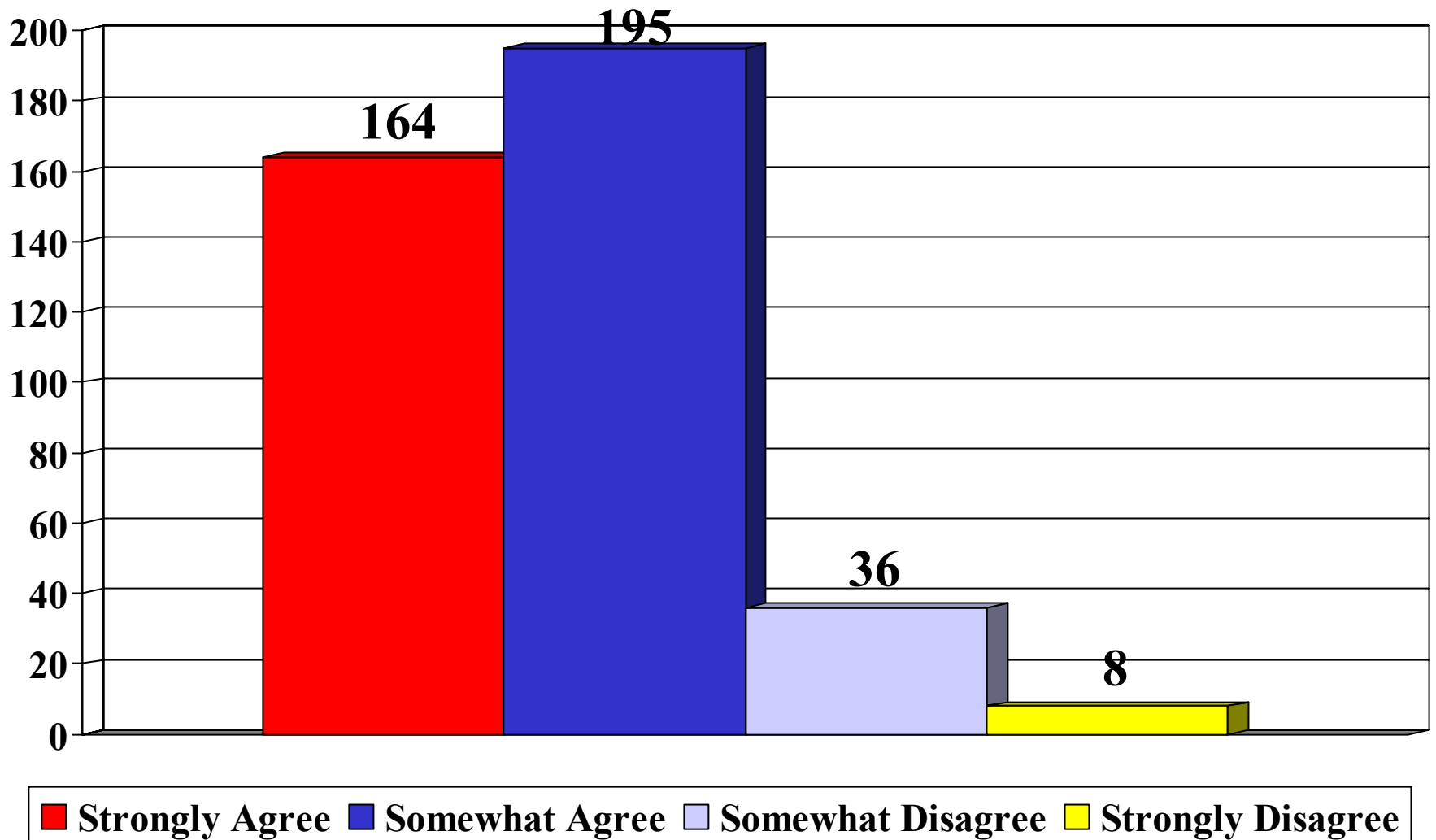
# 10. When thinking about your property tax statement... Which level of government accounts for the highest property taxes?



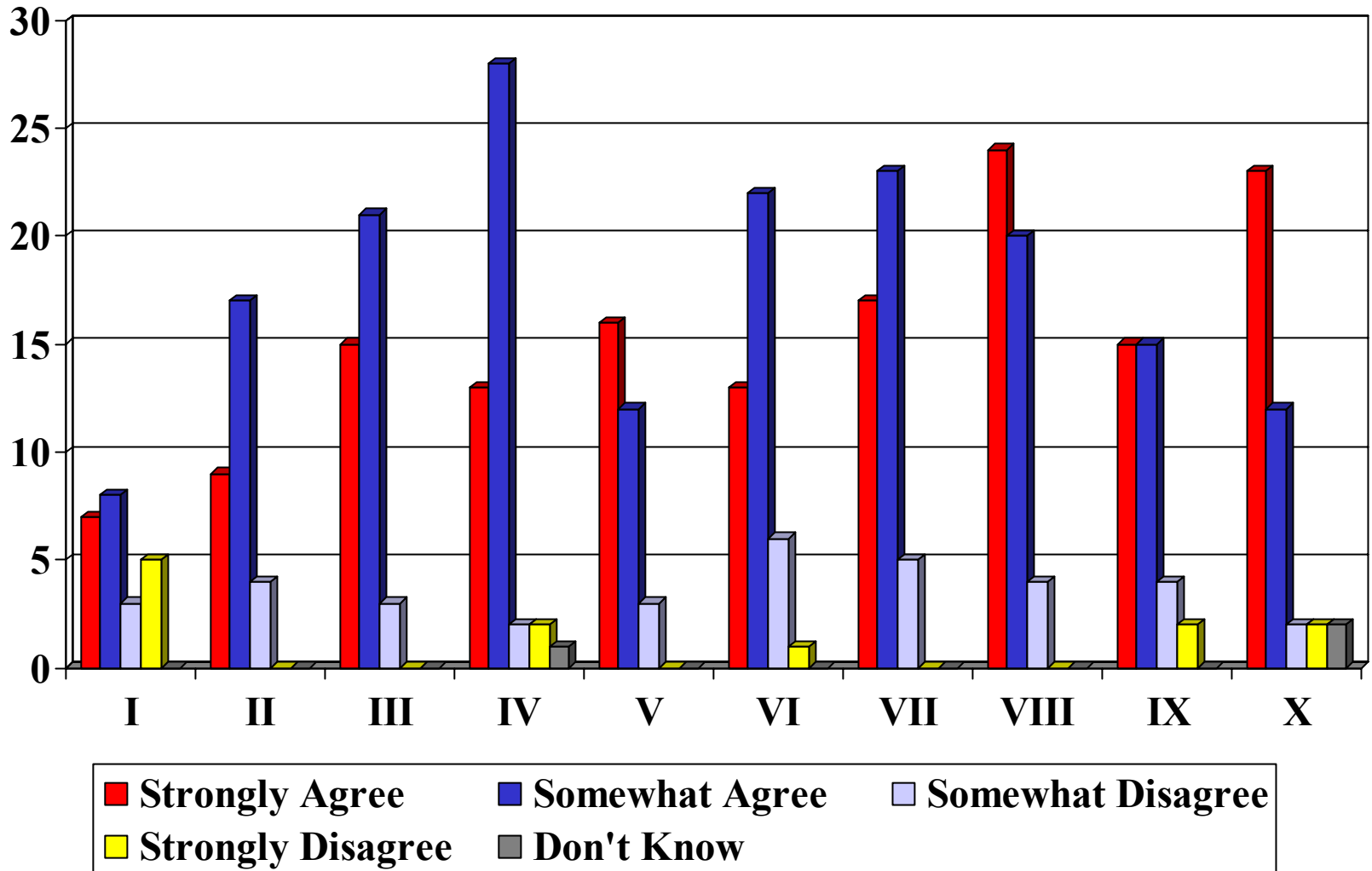
# 11. I feel people in our area can have an impact on the way the County runs things.



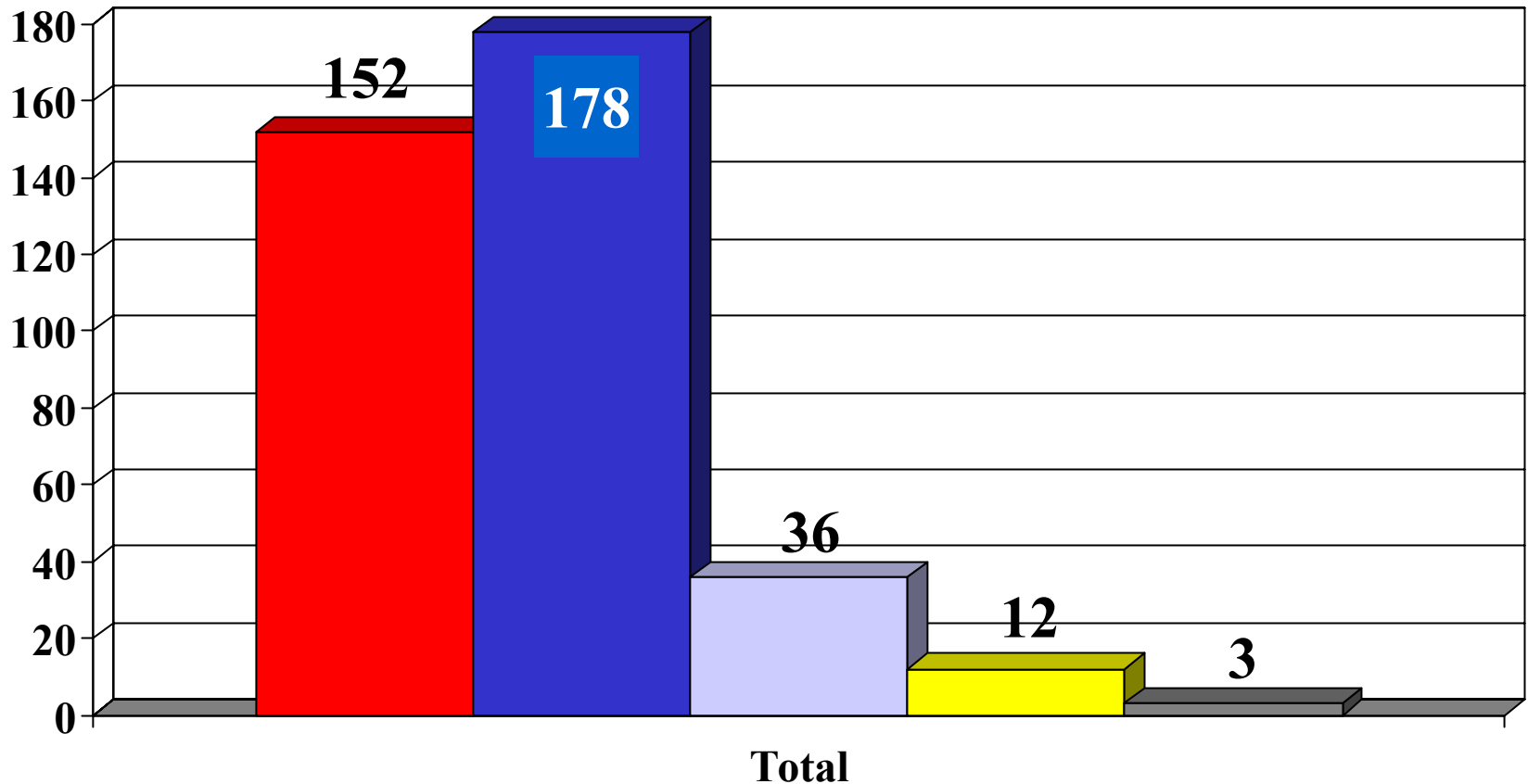
# 11. I feel people in our area can have an impact on the way the County runs things.



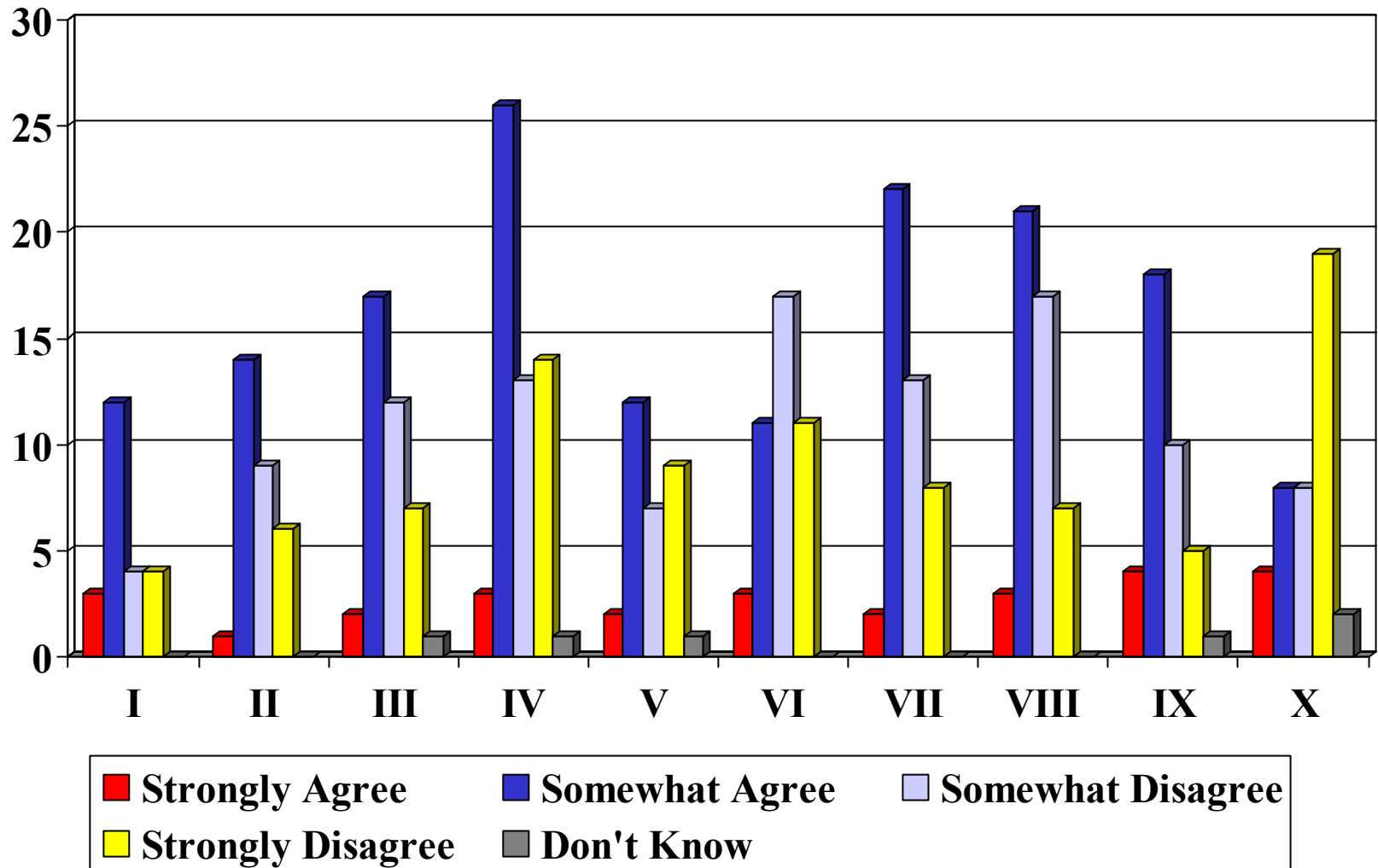
# 12. Our county government provides services in a cost-effective way.



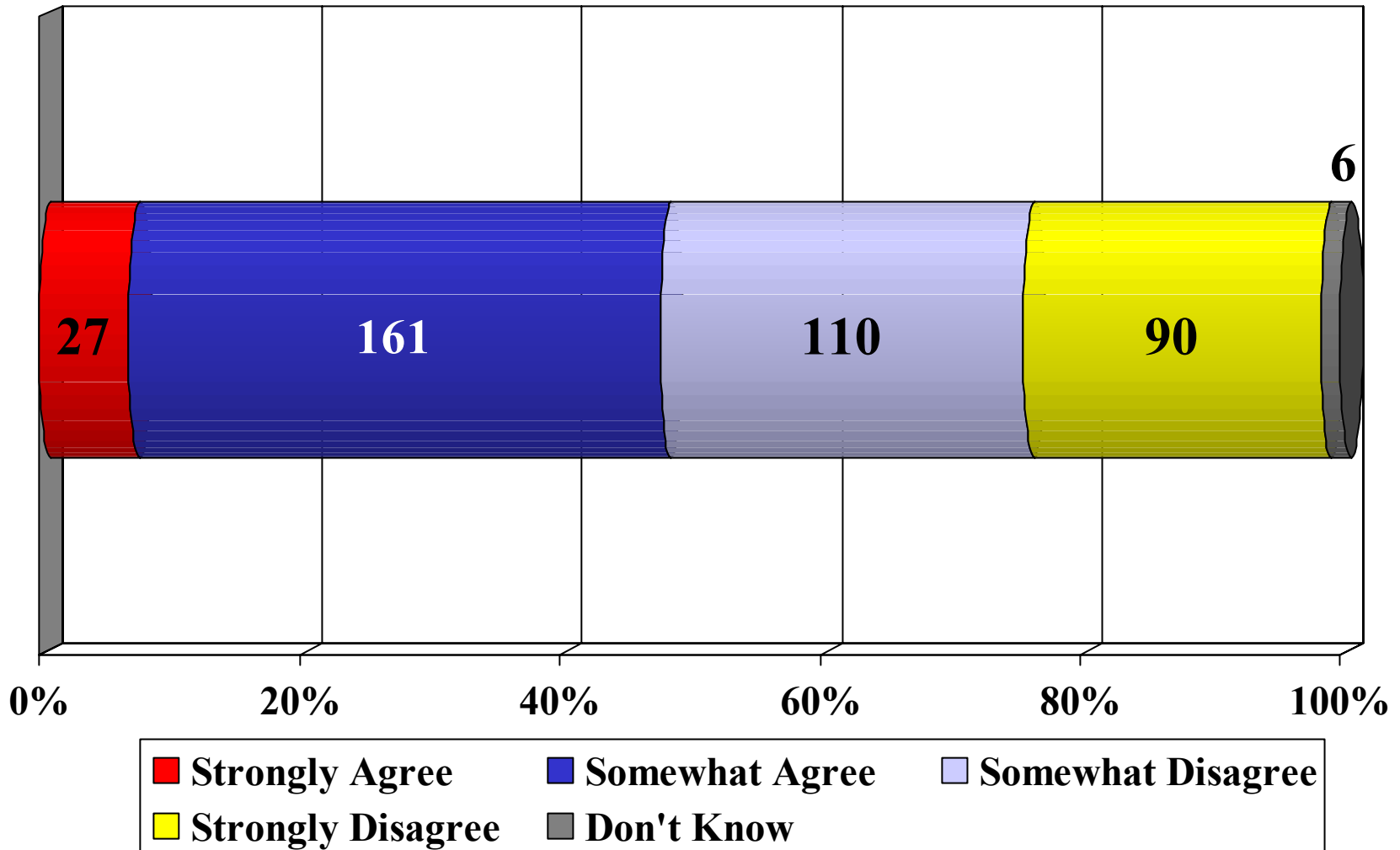
# 12. Our county government provides services in a cost-effective way.



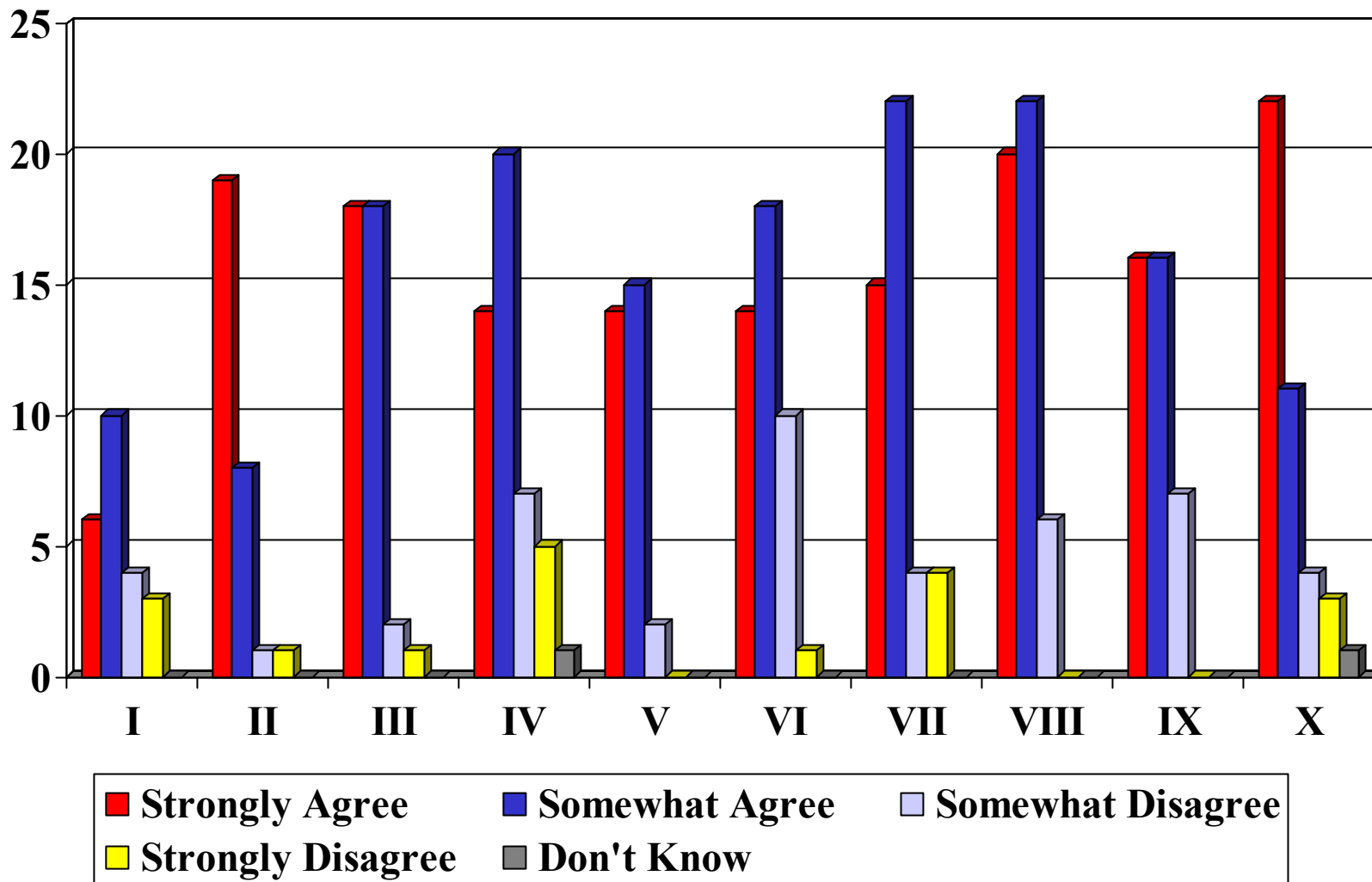
# 13. There are too many unnecessary programs and services in our country.



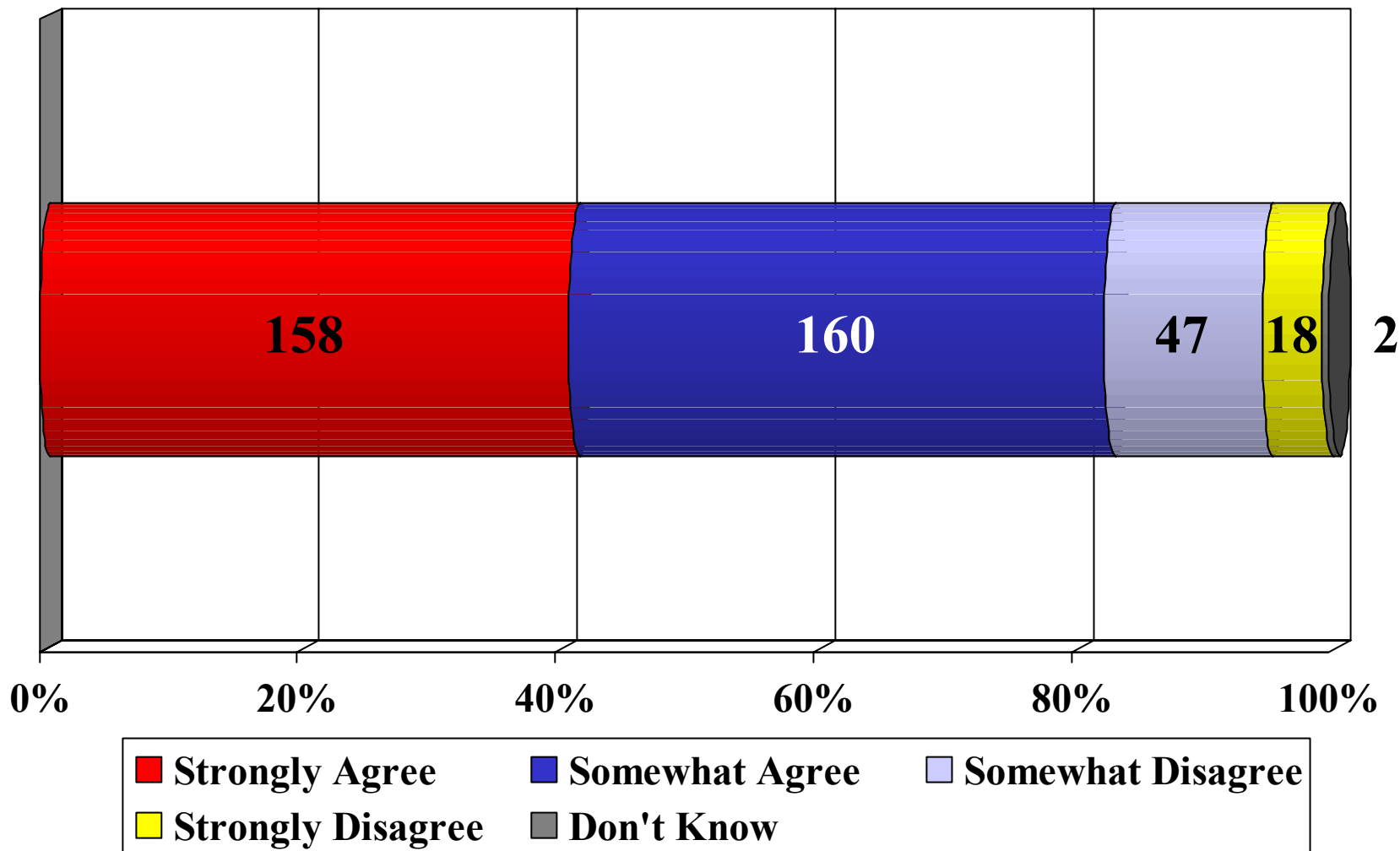
# 13. There are too many unnecessary programs and services in our country.



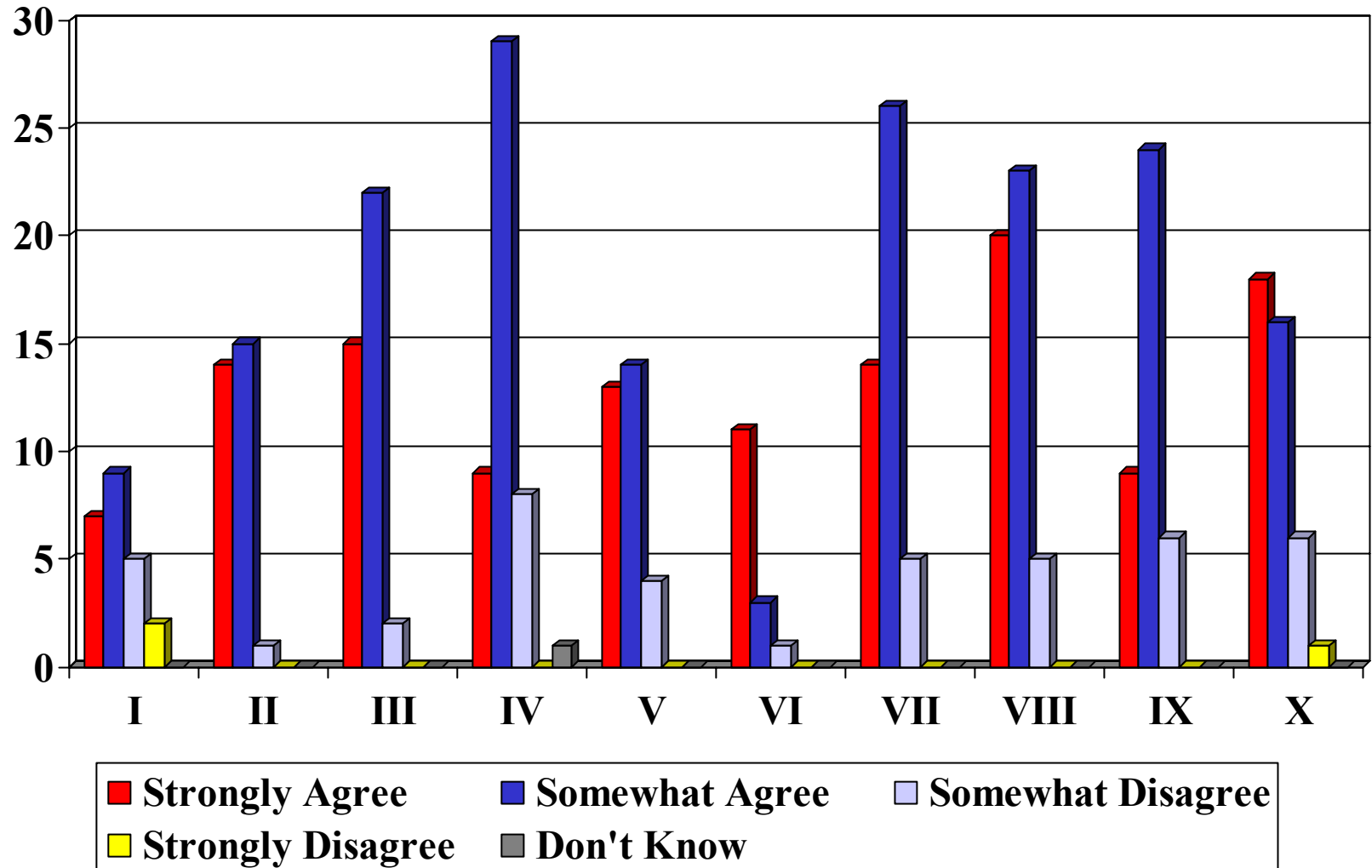
# 14. The County Board responds effectively to budget problems.



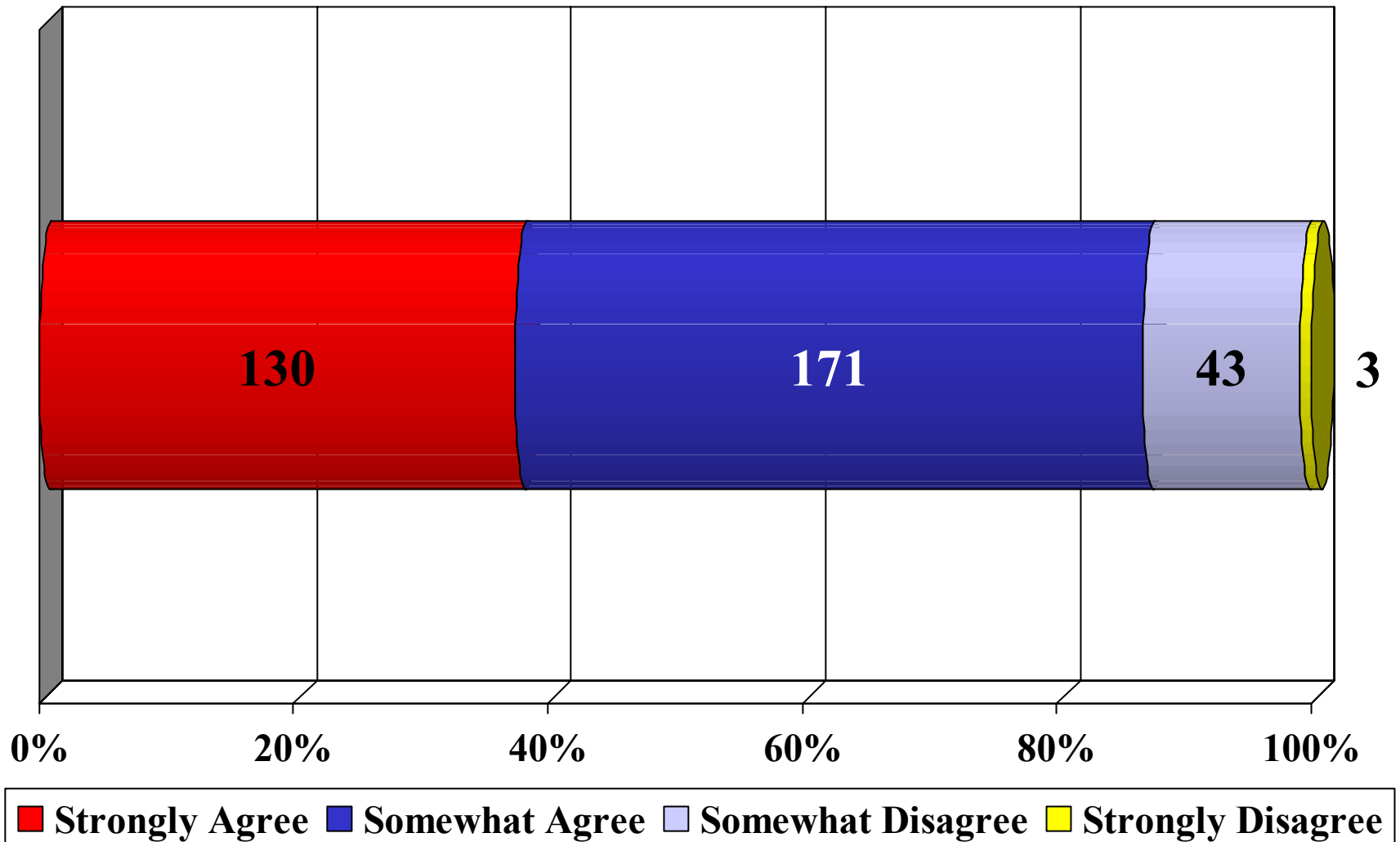
# 14. The County Board responds effectively to budget problems.



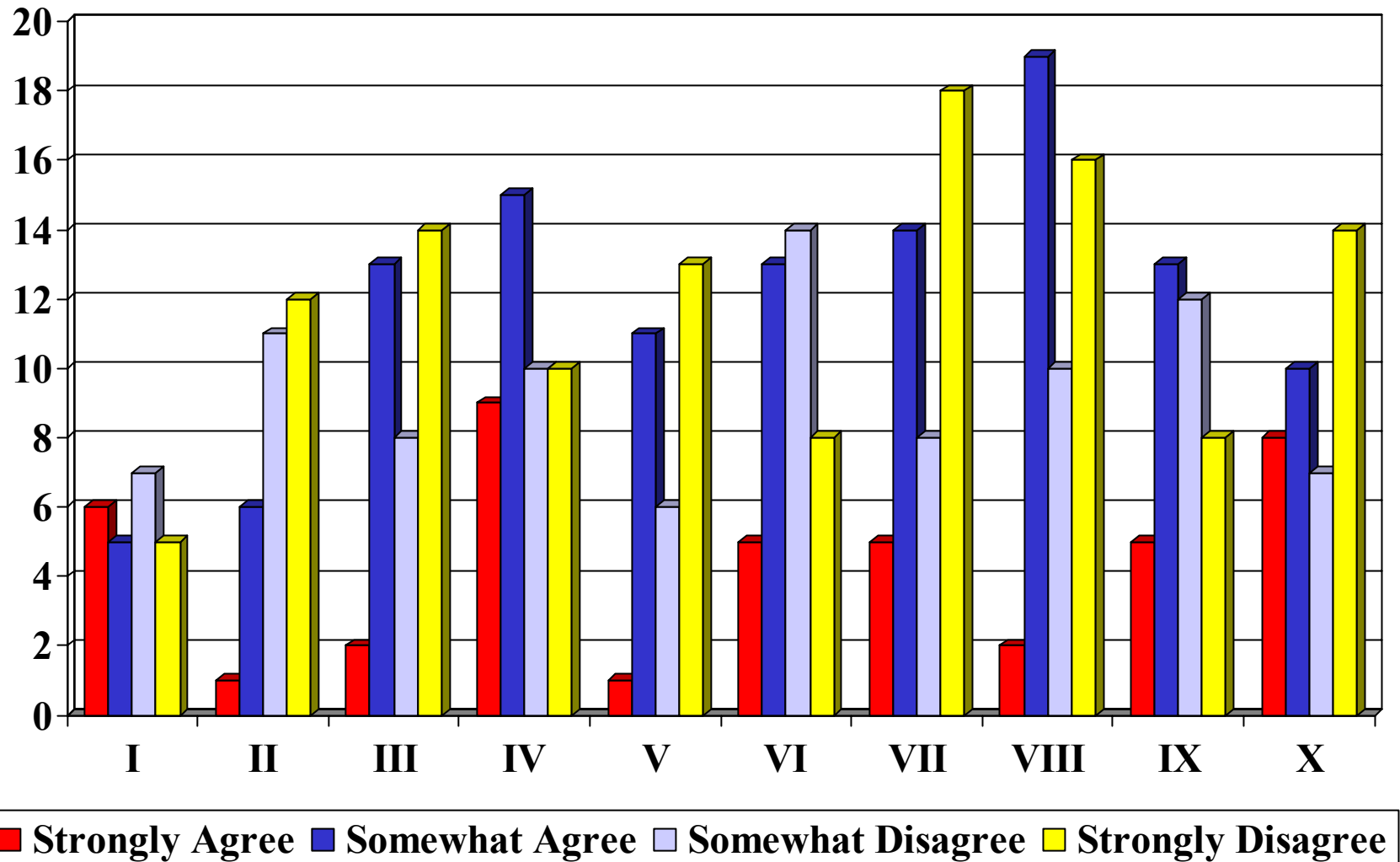
# 15. The County Board understands the most critical needs of the residents of this area.



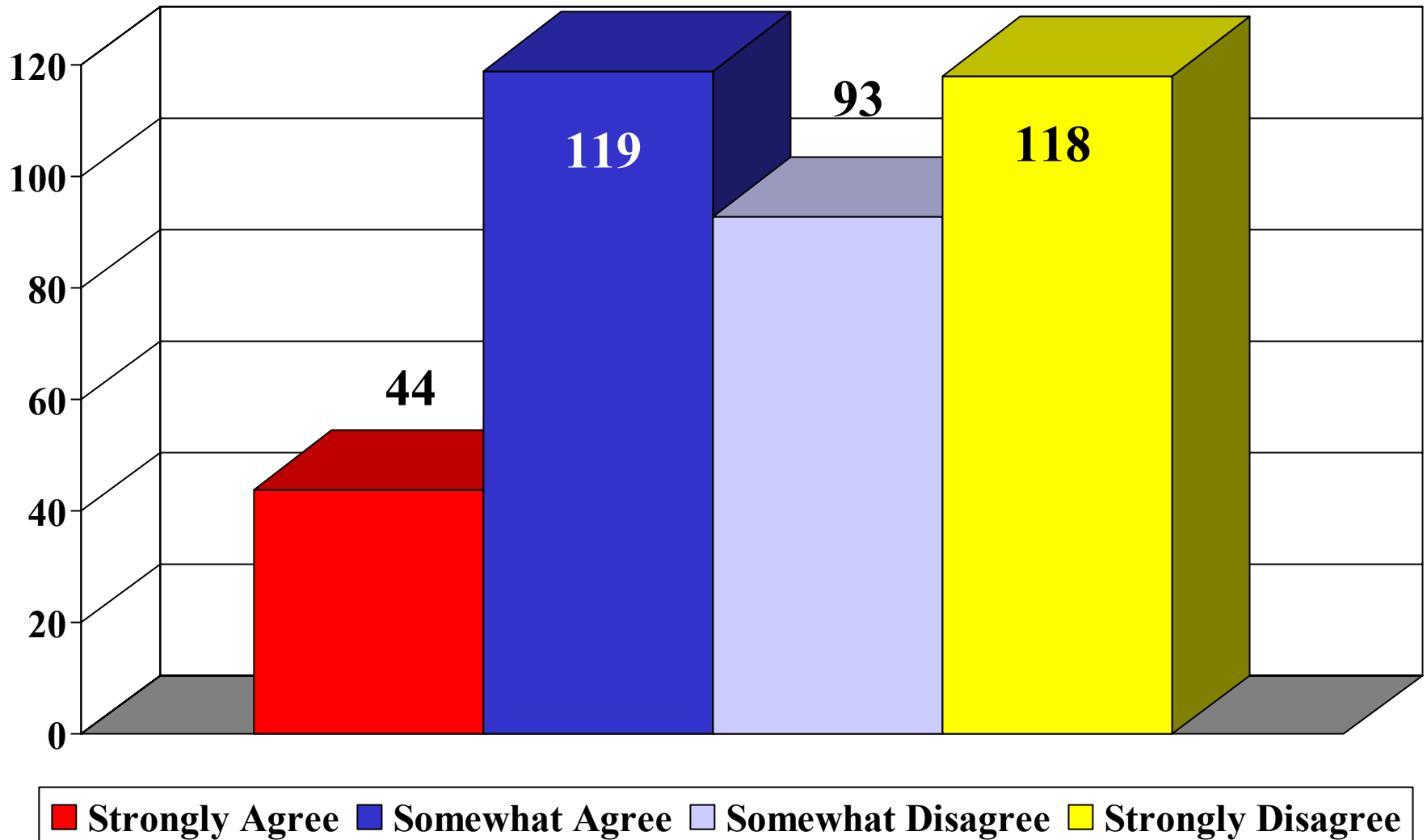
# 15. The County Board understands the most critical needs of the residents of this area.



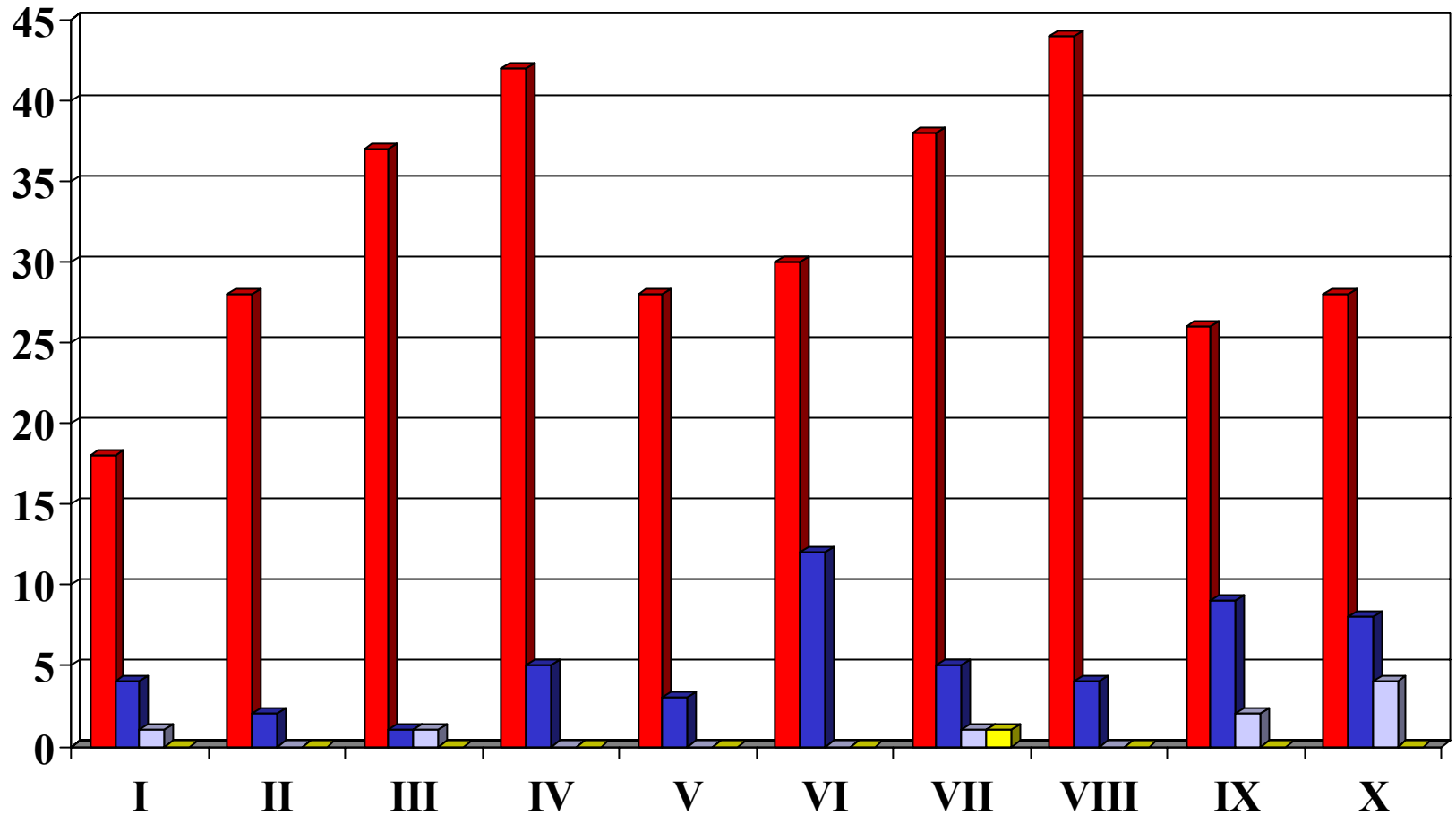
# 16. It is hard to keep track of how the County Board spends its budget.



# 16. It is hard to keep track of how the County Board spends its budget.



# 17. The state imposes too many mandates on County government.



**Strongly Agree** **Somewhat Agree** **Somewhat Disagree** **Strongly Disagree**

# 17. The state imposes too many mandates on County government.

